

AS LA SD

NEWSLETTER
WINTER 2025



HONOR AWARD: THE ORCHARD AT HILLTOP
LandLAB





asla-sandiego.org

VISION

A world where the built and natural environments coexist in harmony and sustainable balance, where all peoples can express their diverse heritage and their individual desires to grow and thrive; and where we, as a profession, can substantially contribute to the process of achieving these ends.

MISSION

To lead, to educate and to participate in the careful stewardship, wise planning and artful design of our cultural and natural environments.

IN THIS ISSUE

WINTER 2025



4 President's Message

BRAD LENTS, ASLA



10 Announcing Tracy Morgan Hollingworth Community Grant Recipients!

DIFAN CHEN, ASLA



12 Social Events: A Year In Review

JOE DODD, ASLA
ANNE EMILIE-GOLD, ASLA



16 Centering Biodiversity in Climate Action

ASHLIE ZINN, ASLA

TRUSTEE UPDATE.....	19
CCASLA UPDATE.....	22
MEMBERSHIP ANNIVERSARIES.....	26
ASLA EXECUTIVE COMMITTEE.....	29
SPONSORS	30

PRESIDENT'S MESSAGE



ABOUT THE AUTHOR
BRAD LENTS, ASLA
PRESIDENT

Dear ASLA San Diego Members & Affiliates,

As I step into the role of President of the ASLA San Diego Chapter, I want to express how truly honored I am to serve our community in the upcoming year. The San Diego ASLA Chapter has long been defined by its energy, creativity, professionalism, and generosity of spirit, and I am grateful for the opportunity to help carry that momentum forward.

The end of the year has been full of meaningful activities that showcased the strength and vibrancy of our Chapter. From the National ASLA Conference in New Orleans, our annual Golf Tournament at Maderas, and our festive Annual Holiday Party, we've had no shortage of opportunities to connect, learn, celebrate, and elevate the landscape architecture profession. I'd also like to extend special congratulations to our two newest Fellows, Jon Wreschinsky and Patricia Trauth, who were formally recognized at the National Conference. Their dedication and contributions to landscape architecture continue to uplift and inspire our entire community.

My sincere thanks also go to our Past President, Kathryn Kanaan, and the 2025 Board of Directors for their leadership, commitment, and service. Their hard work has laid a strong foundation for the year ahead. I am equally excited to work

alongside our new Board of Directors, an exceptionally talented and passionate group of individuals, dedicated to advancing our Chapter and our profession.

Over the next couple of months, we will begin developing our calendar of events for 2026. I encourage all members, colleagues, students, and community partners to share your ideas for how we can deepen engagement and broaden our impact in the upcoming year. Whether it's programming, advocacy, education, social events, or community outreach, your input is essential. Please don't hesitate to reach out to me or any member of the Board with any ideas for the upcoming year. Stay tuned for the many ways you can engage with ASLA San Diego in the year ahead.

As we approach the holiday season, I want to wish each of you a joyful and restorative time with friends, family, and loved ones. I hope each of you take a well-deserved break, whether you are traveling, reconnecting with friends and family or simply taking a moment to recharge.

Wishing you all a peaceful, joyful, and prosperous 2026!

Warm Regards,

Brad Lents, ASLA

WELCOME 2026 BOARD OF DIRECTORS



Brad Lents, ASLA
PRESIDENT



Dillon Diers, ASLA
PRESIDENT-ELECT



Kathryn Kanaan,
ASLA
PAST PRESIDENT



Thomas McDaniel,
ASLA
TREASURER



Alexandra Trofimov,
ASLA
SECRETARY



Jon Wreschinsky,
FASLA
TRUSTEE



Phil Armstrong, ASLA
CCASLA DIRECTOR



Rich Risner, ASLA
CCASLA DIRECTOR



Difan Chen, ASLA
**VP COMMUNITY
OUTREACH**



Trista Garcia Silva,
ASLA
**VP COMMUNICATIONS
& VISIBILITY**



Nikki Remmel, ASLA
VP MEMBERSHIP



Kenya Huezo, ASLA
**VP EDUCATION
PROGRAMS**



Joe Dodd, ASLA
**CO-VP SOCIAL
PROGRAMS**



Anne-Emilie Gold,
ASLA
**CO-VP SOCIAL
PROGRAMS**



Amy Conrad
**EXECUTIVE DIRECTOR
& GOLF COMMITTEE
CO-CHAIR**

...AND THIS YEAR'S COMMITTEE CHAIRS



**Gwen Stark, ASLA
EMERGING
PROFESSIONALS
CO-CHAIR**



**Fernanda Suarez, ASLA
EMERGING
PROFESSIONALS
CO-CHAIR**



**Stephanie Green, ASLA
CLIMATE ACTION
COMMITTEE
CO-CHAIR**



**Ashlie Zinn, ASLA
CLIMATE ACTION
COMMITTEE
CO-CHAIR**



**Jeff Dolan
GOLF COMMITTEE
CO-CHAIR**



**Dillon Diers, ASLA
GOLF COMMITTEE
CO-CHAIR**

FEATURED

A special welcome goes out to our two newest members: President-Elect Dillon Diers and Secretary Alexandra Trofimov.



Dillon Diers, ASLA President-Elect

We're delighted to introduce Dillon Diers, ASLA as the 2026 President Elect of the San Diego Chapter of ASLA. Dillon brings a warm, collaborative spirit and a clear vision for how landscape architecture can strengthen communities, advance climate positive design, and create welcoming places for everyone.

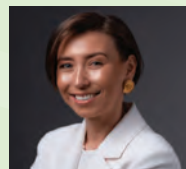
Over nearly two decades, Dillon's work has blended design excellence with environmental stewardship. As a Partner at OJB's San Diego office, he has led and collaborated on projects that set a high bar for resilience and performance—from the LEED Gold-certified Sunnylands Center & Gardens, where he personally oversaw the placement of 53,000 arid landscape plants, to large, complex waterfront urban transformations like RaDD and the Warner Brothers Second Century campus designed with Gehry Partners. These landscapes are celebrated for their artful planting, technical rigor, and human comfort—proof that thoughtful design can be both beautiful and resource wise.

BOARD MEMBERS

Dillon's contributions have been recognized widely, including national honors such as the Cooper Hewitt National Design Award for Landscape Architecture and multiple ASLA and ULI awards connected to projects like Klyde Warren Park and Sunnylands. Beyond project work, he is an active voice in our profession—speaking at ASLA National Conventions on climate resilient planning (most recently highlighting lessons from the Brisbane Baylands Master Plan), publishing in Urban Land Magazine, and mentoring through OJB*lab, the firm's research arm advancing evidence based strategies.

Outside the studio, Dillon is a husband and father of two, and he's actively engaged in the San Diego community. That personal commitment to stewardship—at home and in our region—shapes the welcoming, people first lens he brings to chapter leadership.

As President Elect, Dillon is focused on amplifying member voices, expanding mentorship and professional development, and deepening our chapter's partnerships across public agencies, schools, and community organizations—so that landscape architecture continues to lead in resilience, equity, and everyday delight. We're excited for the year ahead and invite you to join Dillon in shaping programs, advocacy, and events that reflect the best of San Diego's landscape architecture community.



Alexandra Trofimov, ASLA Secretary

We are as equally thrilled to introduce Alexandra Trofimov, ASLA as the 2026 Secretary of the San Diego Chapter of ASLA. Alexandra is honored and eager to bring a fresh perspective and next-generation energy to our chapter's activities and leadership, while supporting ASLA's mission to advance equitable climate benefits, restore ecosystems, and empower communities.

With experience in both private and public sectors, Alexandra leverages her landscape architecture background to promote climate-resilient, equitable, and community-driven planning throughout San Diego County. Her work includes collaborating with local, state, and federal agencies, overseeing ordinance updates, and championing environmental stewardship and inclusive community engagement.

Alexandra holds a Master of Science and a Bachelor of Science in Landscape Engineering. She has also pursued doctoral studies in Genetics, Plant Growing, and Plant Protection, which has deepened her expertise in ecology and sustainability.

Alexandra is passionate advocate for professional growth and community service, actively participating in organizations dedicated to sustainability, diversity, and mentorship within the field.

Outside of work, Alexandra loves to stay active and maintain a strong connection to nature. She enjoys traveling, camping, and spending time in the ocean, where she practices freediving, scuba diving, and sailing. These experiences continually inspire her professional perspective, allowing her to observe environmental changes firsthand and strengthening her commitment to sustainability and resilience.

FEATURED BOARD MEMBERS



Featured Board Member: Anne-Émilie Gold, ASLA Co-VP Social Programs

Anne-Émilie Gold is the co-owner of Gravel To Gold, Inc., a boutique landscape design and construction firm serving the greater San Diego area. She specializes in residential gardens that emphasize natural materials, climate-adapted vegetation and water conservation. Her approach is rooted in listening to clients, honoring cultural values and delivering well-crafted outdoor spaces shaped around each of her client's needs.

As Co-Vice President of Social Events for the ASLA San Diego Chapter for 2025 and continuing on in 2026, Anne-Émilie looks forward to strengthening the sense of community within the chapter. She is committed to developing welcoming and well-organized events that bring members together, encourage collaboration and highlight the vibrant work of landscape architects across the region.



ANNUAL SPONSORSHIP SIGN-UPS NOW OPEN!

**LEARN MORE ABOUT
SPONSORSHIP BENEFITS**

CAN'T BE AN ANNUAL SPONSOR?

Sign up to sponsor an ASLA event.
Event sponsor sign up [coming soon.](#)

T.B. PENICK & SONS, INC.

For more than a century, T.B. Penick & Sons, Inc. has been a trusted leader in providing innovative concrete materials and finishes to owners, architects, contractors, and specifiers like you. Our deep-rooted expertise allows us to deliver cutting-edge solutions that elevate the durability, aesthetics, and functionality of every project. Whether working on large-scale commercial developments, or intricate architectural designs, we are committed to delivering excellence through advanced construction techniques and unparalleled craftsmanship.

We take pride in collaborating closely with our clients, ensuring that each project reflects their unique vision while meeting the highest standards of quality and performance. From concept to completion, our team is dedicated to maintaining the integrity of your design intent. With meticulous attention to detail and a passion for innovation, we bring creative ideas to life, transforming ordinary spaces into extraordinary environments that stand the test of time.

Beyond craftsmanship and innovation, we recognize the growing importance of sustainability in today's built environment. Our advanced concrete solutions can help you achieve your sustainability goals, including lowering your project's carbon footprint. By integrating eco-friendly materials and durable finishes that reduce long-term maintenance needs, we contribute to greener, more resilient concrete. Our expertise in sustainable design ensures that your project aligns with environmental best practices without compromising quality or aesthetic appeal.

At T.B. Penick & Sons, Inc., we believe in building lasting relationships founded on trust, integrity, and shared success. We look forward to partnering with you, providing the knowledge and resources necessary to turn your vision into reality. From assisting with specification writing and no-cost sample development to cost budgeting and full project installation, we are committed to making the process seamless and efficient. Our expertise ensures that your project is not only beautiful and functional but also cost-effective and environmentally responsible. Together, we can create spaces that stand the test of time while meeting the highest standards of quality and sustainability.



SINCE 1905, WE'VE BEEN ENSURING YOUR DESIGN INTENT IS REALIZED.

Schedule a presentation or showroom visit and put our expertise to work on your next project.

Call Marketing at 858-558-1800. Find us on 

www.TBPenickICS.com

ANNOUNCING OUR TRACY MORGAN HOLLINGWORTH COMMUNITY GRANT RECIPIENTS!



ABOUT THE AUTHOR
Difan Chen, ASLA
VP COMMUNITY OUTREACH

ASLA San Diego is proud to award California Native Plant Nursery and Wild Ones San Diego with a Tracy Morgan Hollingworth Community Grant! Funds for these grants were raised at the 2025 Annual Golf Tournament.

Our recipients:

California Native Plant Society

The California Native Plant Society San Diego Chapter protects and celebrates the rich diversity of native plants and habitats across San Diego and Imperial counties. Through science, conservation, gardening and community education, we inspire people to understand, appreciate, and grow native plants.

The plan for the grant award:

CNPS is excited to put the grant award toward completing the wing area of Bird Park (located by North Park and Golden Hill) with native plants, interpretive signage, and provide new opportunities for education, exploration and deeper community involvement..



CONGRATULATIONS TO OUR COMMUNITY GRANT RECIPIENTS! STAY TUNED THROUGHOUT THE YEAR FOR UPDATES ON BOTH OF THESE EXCITING PROJECTS! THANK YOU, ASLA SAN DIEGO FOR YOUR SUPPORT TOWARD THE TRACY MORGAN HOLLINGWORTH COMMUNITY GRANT!

Wild Ones San Diego

Wild Ones San Diego is a volunteer organization dedicated to helping our community plant native flora that support native fauna and keep San Diego Wild! We offer free seeds, seedlings, and planting advice at local events and engage in larger-scale native garden installations.

The plan for the grant award:

Wild Ones San Diego is excited to use the awarded grant to support the creation of an urban educational public green and garden space on an underutilized parcel within the City of La Mesa. The Massachusetts Avenue Community Pocket Park will provide students and residents in La Mesa with a native plant oasis to enjoy a bit of wildlife in the urban matrix. Your funding will allow us to include a footpath, seating area, educational signage, water feature, and a little library to swap books and native seeds for the public to help expand natural habitat in their yards and gardens.



SOCIAL EVENTS: A YEAR IN REVIEW

This past year, the ASLA San Diego Chapter brought together members through an active and creative mix of social and community-focused events.

We started off the year with our annual kick off event at Punch Bowl Social hosted by Dave Bang Associates.








ABOUT THE AUTHOR
Joe Dodd, ASLA
VP-SOCIAL PROGRAMS
CO-CHAIR



ABOUT THE AUTHOR
Anne-Emilie Gold
VP-SOCIAL PROGRAMS
CO-CHAIR





Heading into summer we **gath- ered in Solana Beach** for a morning of hiking through **Annies Canyon.**

Along the way we explored projects designed by local firms including the Solana Beach Rail Trail as well as the Harbaugh Seaside Trail with the designers on hand providing behind-the-scenes into the design process. We bookended the hike with a happy hour/lunch at Pizza Port.

In August, we switched gears and hosted an afternoon **Sketch Crawl in Balboa Park** with local artist and educator **Jacqueline Gold.**

Members got to explore sketching techniques, capturing the beauty of the park, and enjoying time connecting with colleagues.

In October we hosted our **annual Golf Tournament** at Maderas Golf Club in Poway.

Participants enjoyed a full day on the course, taking advantage of Maderas' excellent playing conditions and its forty acres of natural terrain. The event brought together landscape architects, designers, and sponsors for networking, friendly competition and community building. Thank you to everyone who joined us and contributed to another successful tournament!



We closed out the year with our **annual Holiday Gala** at Marina Village in Mission Bay.

Members and sponsors gathered for an enjoyable evening that included a generous buffet, a signature cocktail, plenty of sweet desserts and cakes, games and even an animated ugly Christmas sweater contest. It was a pleasure to see everyone and celebrate together to end the year on a joyful note. Oh, what fun!



As we look forward into 2026, be sure to keep an eye out for many more fun and educational social events including a photography tutorial, happy hours, and project tours.

Joe Dodd, ASLA & Anne-Émilie Gold, ASLA
Co-VPs Social Programs





**VISIT OUR EVENT
PHOTOS PAGE ON
OUR WEBSITE**

CENTERING BIODIVERSITY IN CLIMATE ACTION



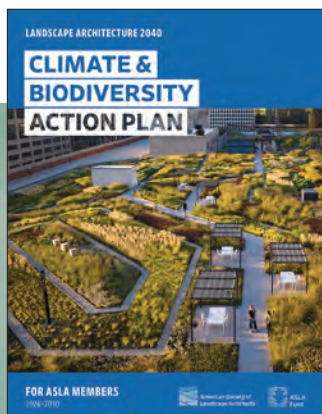
ABOUT THE AUTHOR

Ashlie Zinn, ASLA

CLIMATE ACTION COMMITTEE CO-CHAIR

At this year's ASLA National Conference, a bold new vision was introduced: the **Landscape Architecture 2040: Climate & Biodiversity Action Plan**. This plan marks a major evolution from the 2022 Climate Action Plan, recognizing that the challenges of climate change and biodiversity loss are deeply connected and must be addressed together.

The updated plan sets new targets for biodiversity, greenhouse gas reduction, carbon sequestration, adaptation, and climate and biodiversity justice. It provides a shared roadmap for landscape architects in all areas of practice including private firms, public agencies, academia, and community groups to lead meaningful change.



The plan is organized around four key goals that define the path forward:

- **Climate:** Scale up climate positive approaches
- **Biodiversity:** Protect, conserve, restore, enhance, and manage natural systems
- **Equity:** Amplify the power of people and communities
- **Advocacy:** Advance climate and biodiversity action through leadership and engagement

Designed as a practical resource, the plan guides climate and biodiversity work across the profession and will steer ASLA's national and chapter-level programs from 2026 to 2030. Goals will be revisited every five years to ensure continued progress toward

DESIGNED AS A PRACTICAL RESOURCE, THE PLAN
GUIDES CLIMATE AND BIODIVERSITY WORK ACROSS THE
PROFESSION AND WILL STEER ASLA'S NATIONAL AND
CHAPTER-LEVEL PROGRAMS FROM 2026 TO 2030.



the **Landscape Architecture 2040 Vision**, where every landscape architecture project actively contributes to a healthier planet and more equitable society. Projects aligning with this vision achieve net zero greenhouse gas emissions while doubling carbon sequestration, provide measurable economic benefits, protect, conserve, restore, and enhance biodiversity, and address climate and biodiversity injustices.

To support this work, ASLA also introduced a new **Biodiversity Primer**, a practical resource that equips landscape architects with strategies and tools to center biodiversity in every project. The primer highlights how design can protect and restore ecosystems, integrate native species, and advance equitable climate and biodiversity outcomes.

The Climate Action Committee encourages all members to explore both the new Climate & Biodiversity Action plan and the Biodiversity Primer and consider how these resources can inform local projects, advocacy, and community partnerships here in San Diego. By applying these strategies, we can position landscape architecture at the forefront of climate and biodiversity solutions.

**Landscape Architecture 2040:
Climate & Biodiversity Action Plan**

Biodiversity Primer





At Dave Bang Associates, we **specialize in solutions** that are balanced: budget and “wow” factor, creativity and function, challenge and safety. With 45+ years of experience and **all the top brands**, we have you covered no matter the project. From concept, design, planning, and ordering, to delivery, storage, install, service, and support, our team of experts will be by your side to make sure your project is a **massive success**.

Picking the right manufacturers to fit your project can make all the difference. That is why we offer the widest selection of park + playground solutions in the industry, **giving you the power** to choose what’s right for your project without the hassle of coordinating with multiple vendors.

since 1979

dave bang

associates inc.

► park+playground outfitters

PROUD PLATINUM SPONSOR OF



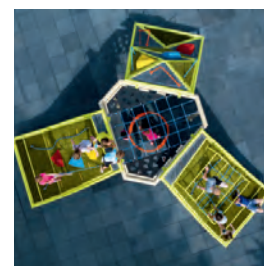
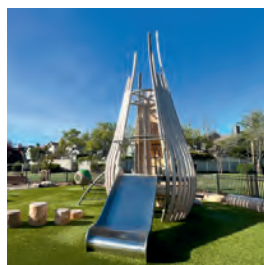
ASLA

SAN DIEGO

AMERICAN SOCIETY OF
LANDSCAPE ARCHITECTS

CONNECT WITH
US TODAY!





Meet *Your*
Architect
Resource
Manager
Anthony
Kenaston



Anthony is your one stop connection for all park + playground needs. Specializing in collaborating with Landscape Architects, Anthony brings fun, vibrancy, and perspective to your project.

COMMUNITY + CONNECTION + ADVENTURE

► START YOUR ADVENTURE TODAY 1.800.669.2585 WWW.DAVEBANG.COM

TRUSTEE UPDATE



ABOUT THE AUTHOR

Jon Wreschinsky, PLA, ASLA

CHAPTER TRUSTEE

Since our previous update, the organization has experienced a period of significant activity and progress. The recent annual meeting was a resounding success, offering members numerous avenues for both personal and professional growth within the landscape architecture community.

ASLA remains committed to adapting and evolving in accordance with the interests and guidance of its members. Recognizing the many ongoing challenges faced by both our organization and the profession at large, ASLA has launched several key initiatives. These efforts are designed to ensure the continued well-being of our Society and to reinforce the vital role of landscape architecture in addressing complex issues.

Highlighted below are some of the actions ASLA has taken to support its members and the profession:

- » Responding proactively to emerging challenges within the field and the organization.
- » Implementing initiatives aimed at securing the long-term health and sustainability of the Society.
- » Advocating for the importance of landscape architecture as a solution to pressing professional and societal challenges.

National Dues Structure – ASLA has recently adopted a proposed increase in national dues, addressing both the ongoing impact of inflation and previous decisions made during the COVID pandemic. This adjustment will take effect in two stages, beginning with the 2026 dues year. The primary goals of the increase are to enhance the value of membership, strengthen ASLA's financial stability, and support improved operational planning for the future.

One of the notable changes in the new dues structure is the simplification of associate dues, specifically designed to benefit emerging professionals in the field. This streamlined approach aims to make membership more accessible and valuable for those at the early stages of their careers. Additional information regarding improved services and benefits for members will be provided as details become available.

Landscape Architecture 2040: Climate & Biodiversity Action Plan

– The updated Climate & Biodiversity Action Plan has been officially adopted and aims to establish ambitious new targets for 2030, supporting ASLA's long-term vision for 2040. The plan establishes four main goals:

1. **Scale up climate-positive solutions:** The plan encourages the widespread adoption of strategies and projects that actively benefit the climate, aiming to mitigate adverse environmental impacts and support sustainable practices throughout the industry.
2. **Preserve and enhance biodiversity:** By prioritizing the protection and enrichment of diverse ecosystems, the plan seeks to safeguard natural habitats and foster resilience within landscapes across communities.
3. **Empower people and communities:** Central to the plan is the commitment to engage and support individuals and groups, ensuring they have the resources and knowledge necessary to participate in climate and biodiversity initiatives.

TRUSTEE UPDATE (CONT.)

4. Lead and advocate for climate and biodiversity action:
The plan positions ASLA and its members at the forefront of efforts to influence policy, raise public awareness, and champion solutions that address pressing environmental challenges.

Guiding climate and biodiversity strategies for landscape architecture firms and related organizations, the plan will shape ASLA's programs and investments through the period of 2026 to 2030. To ensure continued relevance and effectiveness, the outlined goals will undergo review and updates every five years, extending through 2040 and beyond. Specific information can be found at <https://www.asla.org/climateandbiodiversityactionplan.aspx>.

ASLA Professional Practice Networks – ASLA is streamlining its Professional Practice Networks (PPNs) from 22 to 10, aligning them with the Society's 2040 vision and 2025-27 Strategic Plan. The restructuring aims to improve access to educational resources, promote member interaction in professional practice and advocacy, boost transparency, and deliver valuable content. Beginning in 2026, members—reflecting the dues increase—can join up to three PPNs, offering greater flexibility and support for professional development. <https://www.asla.org/ppn.aspx>

iAdvocate – ASLA continues to urge use of the iAdvocate Network to advance policies important to the profession. Recently, Government Affairs launched a campaign to support national parks and other public lands. ASLA also continues campaigns to protect funding for the Land and Water

Conservation Fund (LWCF), and to gain congressional support for the Excess Urban Heat Mitigation Act, which would provide funding to communities for landscape architecture techniques that address urban heat. Additional information can be found at: <https://www.asla.org/GovernmentAffairs.aspx>.

Working with Stakeholders – Lastly, in these trying times, ASLA continues to be an active participant in many coalitions and partnerships, including the LWCF Coalition, National Parks Second Century Coalition, Community Impact Coalition, National Complete Streets Coalition, Transportation For America Federal Strategies Group, the Building Resilience Adaptation Coalition, and more. As part of the Resilience Coalition, ASLA has joined sending recommendations to Congress on the FEMA reform legislation. As part of the Water Protection Network, ASLA joined in sending comments for the U.S. Army Corps of Engineers rulemaking on nationwide permits. The comments call for an emphasis on using nature-based solutions. ASLA joined with the National Parks Second Century Coalition in calling on Congress to use their authority to increase funding, end the hiring freeze and prevent more reductions in the workforce at the National Parks Service. You are encouraged to reach out to these allied organizations and take advantage of opportunities associated with their offerings.

Feel free to contact me if you have any questions.

Jon S. Wreschinsky, FASLA

619-916-6956

Sponsor Spotlight



Play Equipment, Shade, Site Furniture, Sports Equipment & Surfacing



With Coast Recreation, it's not just a purchase, it's a collaboration. Our team is trained and experienced to guide you through the process from needs analysis, design services, retrofit options and certified installation.

We offer tailored Lunch and Learns, CEU session to expand your team's knowledge and development, and connections to designers, experts and educators in the industry.

For over 35 years, Coast Recreation has been Southern California's source for quality outdoor recreation equipment. We represent Landscape Structures, DuMor, SkyWays, Surface America and Aquatix...leaders in the industry when it comes to quality, innovation and warranty. We proudly work and partner with Landscape Architects and the City of San Diego to bring value and FUN to each park we help develop.



Scan the QR Code to contact us for more information.

Coast Recreation
www.coastrecreation.com | 714-619-0100



ABOUT THE AUTHOR
Phil Armstrong
CCASLA



ABOUT THE AUTHOR
Rich Risner
CCASLA



Greetings San Diego landscape architects. The San Diego chapter board welcomes the winter solstice as we bask in the afterglow of a successful and well-attended year end holiday party. The state wide board members of the California Council of ASLA (CCASLA) are continuing to drive conversations and action around wildfire resilience—from fire-smart plant palettes and defensible space strategies to slope stabilization and post-burn restoration. In our final issue of 2025, we want to share our year end status on how our practice, creativity and our voice are shaping policy in adopting the new Zone 'o' Fire Protection rule.

Following passage of AB 3074, Cal-Fire and the Board of Forestry (BOF) staff began working with various stakeholders to develop a proposal for the addition of a 5' foot fire protection zone around structures identified as 'Zone o'. Since March 2025, the Board of Forestry's Zone o Committee has held multiple public workshops to gather input and comments on draft regulatory text to establish the new ember-resistant zone, consistent with AB 3074, SB 504 of 2024 and the Governor's Executive Order N-18-25.

CCASLA has been working hard to provide comments and testimony to the BOF during this period.

The Zone o Committee's most recent version of the draft rule text reflects revisions made in response to public input and CCASLA's efforts. As a result, The Board of Forestry (BOF) has gotten a ton of push and pull in all directions from constituencies running the gambit from CCASLA and other green industry stakeholders, to the State Fire Marshall and insurance industry. The BOF is at a crossroads in terms of where to go on two issues. One is trees in zone o and two is vegetation in zone o. Both issues currently have multiple options.

There are two similar options under consideration for the inclusion of trees within 5 feet of buildings:

Tree Option 1: Well-maintained trees allowed; local tree protections included.

Tree Option 2: Well-maintained trees allowed; branches must be 10 feet from chimneys.

As the BOF zone 0 committee works to finalize rule language, four different options have emerged for what types of plants or landscaping can be included in this 0–5-foot area.

Option 1 – Some plants in pots allowed

Option 2 – Some plants in pots and low, maintained vegetation allowed

Option 3 – Some plants, in pots or planted in-ground, allowed

Option 4 – Well maintained plants allowed

The CCASLA board members agree that a conservative option for zone 0 will likely be adopted. We continue to lobby the BOF to allow flexibility for a middle ground and guidance from local jurisdictions. At CCASLA's Board meeting in November, we have instructed our lobbyist partner to provide testimony to suggest that the BOF establish a multidisciplinary advisory committee to help develop a guidance document on vegetation management. CCASLA is pleased that the BOF has thoughtfully considered our asks and past testimonies and in developing the current rule options.

CCASLA continues to monitor the bills introduced in the 2025-2026 session. The board selectively monitors bills that impact our industry in the state Assembly and Senate. Most legislation has had multiple readings in committee and has cycled through both legislative bodies of the Assembly and Senate. Here's a highlight of the bills we are currently tracking. We encourage all members to peruse the legislative bills for more details at: <https://legiscan.com/CA/bill/>

CURRENTLY MONITORED BILLS

AB 491 – Connolly

Introduced: 2/10/2025 – *has not advanced and remains held in committee.*

California Global Warming Solutions Act of 2006: climate goals: natural and working lands. The bill proposes modification to the Act of 2006 to include green alternatives for carbon sequestration.

AB 507 - Haney

Introduced: 2/10/2025 – *as of 10/10/2025 the bill was chaptered and became law.*

Adaptive reuse: streamlining: incentives. This bill would deem an adaptive reuse project a use by right in all zones, regardless of the zoning of the site, and subject to a streamlined, ministerial review process if the project meets specified requirements, subject to specified exceptions.

AB 638 - Rodriguez

Introduced: 2/13/2025 – *after advancing to Senate with two readings the bill remains in committee.*

Stormwater: reuses: irrigation. The bill would require the guidance to include, but not be limited to, the use of captured stormwater for irrigation to offset the use of potable water, as specified, and criteria including, among other things, pathogens and pathogen indicators and total suspended solids.

AB 667 - Solache

Introduced: 2/14/2025 – *advanced to Senate and was placed on Senate committee inactive file.*

Professions and vocations: license examinations: interpreters.

CCASLA CURRENTLY MONITORED BILLS (CONT.)

AB 742 – Elhawary

Introduced: 2/18/2025 – *advanced through both chambers and vetoed by Governor's Office on 10/13/2025.*

Department of Consumer Affairs: licensing: applicants who are descendants of slaves.

AB 759 - Valencia

Introduced: 2/18/2025 – *advanced through both chambers was chaptered and became law on 10/6/2025.*

Architects: architects-in-training. This bill would authorize a person to apply to the CA board and obtain authorization to use the title "architect-in-training" after they have been identified as a candidate for licensure by the board and have successfully passed at least one division of the Architect Registration Examination.

AB 900 - Papan

Introduced: 2/19/2025 – *bill read a third time in Senate and advanced. The bill was chaptered and enacted on 10/6/2025.*

Environmental protection: 30x30 goals: land conservation: This bill would establish the California Biodiversity Collaborative with a goal of conserving at least 30% of the state's lands and coastal waters by 2030.

AB 945 - Fong

Introduced: 2/19/2025 – *the bill remains held in committee and has not advanced.*

Density Bonus Law: incentives and concessions: green housing developments. The bill would modify the existing Density Bonus Law and require a city or county to grant additional incentives or concessions when an applicant proposes to construct a green housing development as defined in the bill.

AB 1226 - Essayli

Introduced: 2/21/2025 – *remains held in Natural Resources Committee and has not advanced.*

Air quality: wildland vegetation management burning: permits: exemption.

AB 1467 - Hoover

Introduced: 2/21/2025 – *the bill remains held in Committee on Insurance and has not advanced.*

Residential property insurance: tree fire risks. This bill would exempt a residential property insurance policyholder from state and local laws, ordinances, fees, and fines associated with the removal of a tree if their insurer identifies the tree as a fire risk and the Department of Forestry and Fire Protection confirms that the tree is a fire risk.

SB 326 – Becker, Laird, Stern

Introduced: 2/11/2025 – *advanced through both chambers and vetoed by Governor's Office on 10/11/2025. Senate considering veto.*

Wildfire safety: The California Wildfire Mitigation Strategic Planning Act.

SB 499 - Stern

Introduced: 2/19/2025 – *advanced through both chambers was chaptered and became law on 10/10/2025.*

Fire prevention: home hardening: defensible space: data usage. This bill would strengthen existing code and agency oversight in assessing defensible space for fire protection.

SB 556 - Hurtado

Introduced: 2/20/2025 – *bill placed in suspense file and held in committee*

Habitat enhancement and restoration: floodplains.

SB 614 - Stern

Introduced: 2/20/2025 – *advanced through both chambers was chaptered and became law on 10/10/2025.*

Potable water: nonfunctional turf. Current law from AB1572 prohibits the use of potable water for nonfunctional turf located on common areas of properties of homeowners' associations and similar properties starting January 1, 2029. This bill would prohibit that use of potable water one year earlier.

SB 653 - Cortese

Introduced: 2/20/2025 – *advanced through both chambers was chaptered and became law on 10/13/2025.*

Wildfire prevention: environmentally sensitive vegetation management. Existing law requires the Department of Forestry and Fire Protection, in accordance with policies established by the State Board of Forestry and Fire Protection, to assist local governments in preventing future high-intensity wildland fires and instituting appropriate fuels management by making its wildland fire prevention and vegetation management expertise available to local governments, as provided.

SB 795 - Richardson

Introduced: 2/21/2025 – *remains held in committees on General Orders and Natural Resources, and Water*
30x30 goal: state agencies: plans, policies, or regulations. Goal to codify conservation of 30% of public lands by 2030.



Settle in with
the **720 Chair**.



**DO YOU
RECEIVE OUR
WEEKLY EMAIL
REMINDERS?**



We send email summaries weekly to promote the chapter's programming and events, sponsorship opportunities and keep members up to date about important industry happenings. Click the button below to join our distribution list and pass along to your friends and colleagues!

Let's grow our community!

JOIN OUR MAILING LIST!

MEMBERSHIP UPDATE



ABOUT THE AUTHOR

Nikki Remmel, ASLA

VP, MEMBERSHIP

We wish all our members a happy Winter. Thanks for your continued support of the ASLA San Diego chapter!

With the updating of National's computer system, some members may have experienced a disconnection of their membership auto renew. If this happened to you, and you would like help setting up your auto renew, renewing your membership or have any other questions, please feel free to reach out.

Welcome to our new and returning members!

Jana Tyrer, Assoc. ASLA
Robert Seling, Assoc. ASLA
Michaela Zimmerman,
Student ASLA
Jordan Lail, ASLA
Kally Gaughan, ASLA
Sarah Thompson, Student
ASLA
Srushti Sevak, Student
ASLA
Zhiqiang Zeng, ASLA
Amy Conrad, Staff
Jamilie Gabionza, ASLA
Xiayuan Mi, Student ASLA
Drake Mothe, Student
ASLA

Zejin Ma, Student ASLA
Ouida Biddle, Student
ASLA
Nicholas Burr, Student
ASLA
Sheri-Ann Adams, Student
ASLA
Adrian Angi, ASLA
Elizabeth Gaffo, ASLA
JP Zonta, Affiliate ASLA
Neil Heacox, Assoc. ASLA
Deborah McGinn, Student
ASLA
Sherry Morrison, ASLA

6 - 10 YEARS

2015 Phil Armstrong, ASLA

1 - 5 YEARS

2021 Maria Lopez Vazquez, Student ASLA;

2022 Michael McDonnell, ASLA, Scott Cohen

2024 Leila Laumann, Student ASLA;
Melissa Zepeda, Student ASLA

MEMBERSHIP



● 11 - 20 YEARS

2007 Jackie Higgins, ASLA; Darren Jacobsen, ASLA; Jeff Justus, ASLA; Jonathan Austin, ASLA

2008 Mathew MacLeod, ASLA

2009 Laura Handschumacher, ASLA

2012 Mario Magallanes, ASLA

2013 Tom Willima, ASLA; Todd Schechinger, ASLA

2014 Kent Horner, ASLA

31 + YEARS ●

1969 Frank Kawasaki, FASLA

1971 Angelina Sotelo, ASLA

1974 Roger DeWesse, ASLA

1975 William Briggs, FASLA

1977 Dennis Otsuji, FASLA

1978 Vicki Estrada, FASLA

1984 Todd Reese, Mark Steyaert, Don Thibedeau; Jon Becker, ASLA

1987 Maria Marquez

1989 Anthony Lawson, ASLA; Jon Wreschinsky, FASLA; Doug Livingston, ASLA; James Taylor, ASLA; Martin Schmidt, ASLA

1993 Joseph Esposito, ASLA

● 21 - 30 YEARS

1995 Tom Picard, ASLA

1996 Ling Chan, ASLA

2000 Joel Harms, ASLA

2001 Michael Madsen, ASLA

2002 Anne-Emilie, ASLA; Nathan Elliot, ASLA; Kent Wilson, ASLA, David McCullough ASLA

2003 Glen Brouwer, ASLA; Jill Van Sickle, ASLA, Dillon Diers, ASLA

2005 Kyle Fiddelke, FASLA

2006 Todd Pitman, ASLA; Jennifer Montgomery, ASLA; Richard Risner ASLA; Martin Armstrong, ASLA





DESIGN AWARDS

COMING SUMMER 2026

The ASLA San Diego Excellence in Design Awards are the ultimate recognition of design achievement for landscape architecture firms and projects in and outside of the San Diego region. These awards celebrate the innovation and creativity found among the practitioners of landscape architecture.

More details to come (via email and social media).

SAN DIEGO CHAPTER 2025 EXECUTIVE COMMITTEE

PRESIDENT

Brad Lents, ASLA
Spurlock Landscape Architects

PRESIDENT ELECT

Dillon Diers, ASLA
OBJ

TREASURER

Thomas McDaniel, ASLA
City of Chula Vista

SECRETARY

Alexandra Trofimov, ASLA
County of San Diego

PAST PRESIDENT

Kathryn Kanaan, ASLA
KDA Landscape Architects

VP COMMUNITY OUTREACH

Difan Chen, ASLA
KTUA

VP EDUCATION

Kenya Huezo, ASLA
LPA Design Studios

VP MEMBERSHIP

Nikki Rimmel, ASLA
City of Chula Vista

VP VISIBILITY/COMMUNICATIONS

Trista Garcia Silvia, ASLA
StudioWC Architecture + Engineering

CHAPTER TRUSTEE

Jon Wreschinsky, PLA, FASLA
Adjunct Professor

EXECUTIVE DIRECTOR

Amy Conrad
Conrad Public Relations & Marketing

CO-VP SOCIAL PROGRAMS

Joe Dodd
Linear Landscape Architecture

Anne-Emilie Gold

Gravel to Gold, Inc.

CALIFORNIA COUNCIL OF ASLA

Phil Armstrong, ASLA
GroundLevel

Rich Risner, ASLA

Grounded Landscape Architecture

EMERGING PROFESSIONAL CO-CHAIRS

Gwen Stark, ASLA
NAVFAC SW

Fernanda Suarez, ASLA
MIG

CLIMATE ACTION COMMITTEE CO-CHAIRS

Stephanie Green, ASLA
Landscape Architect

Ashlie Zinn, ASLA
KTUA

GOLF COMMITTEE CO-CHAIRS

Amy Conrad
Conrad Public Relations & Marketing

Dillon Diers, ASLA
OBJ

Jeff Dolan
Hunter Industries

ASLASD NEWSLETTER DESIGNER

Kari Cureton
Sarit + State Creative Studio

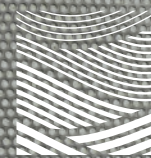


THANK YOU TO OUR **2025 SPONSORS**

T.B. PENICK & SONS, INC.



BENCHMARK LANDSCAPE ► GREEN PRODUCT SALES/HERITAGE TECHNICAL SERVICES
NATIVE WEST ► QCP ► TIKAL CUSTOM PLANTERS ► WEST COAST TURF



Connect with Us



asla-sandiego.org

Mailing Address:
664 Blackthorne Avenue
El Cajon, CA 92020

aslasd@asla-sandiego.org

