

# AS LA SD

DIGITAL NEWSLETTER

SPRING 2025



HONOR AWARD: CIVITA CREEKSIDE PARK  
SCHMIDT DESIGN GROUP





[asla-sandiego.org](https://asla-sandiego.org)

## VISION

A world where the built and natural environments coexist in harmony and sustainable balance, where all peoples can express their diverse heritage and their individual desires to grow and thrive; and where we, as a profession, can substantially contribute to the process of achieving these ends.

## MISSION

To lead, to educate and to participate in the careful stewardship, wise planning and artful design of our cultural and natural environments.



# IN THIS ISSUE

SPRING 2025



## 4 President's Message

KATHRYN KANAAN, ASLA

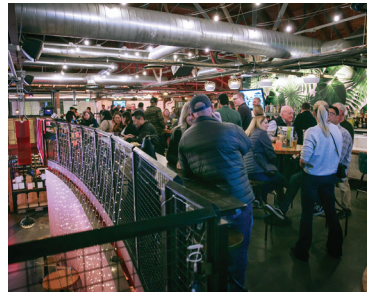


## 6 Welcome to Our New Executive Director



## 9 Connecting Communities to Climate Action

ASHLIE ZINN, ASLA  
STEPHANIE GREEN, ASLA



## 14 2025 Kickoff Photos

COMMUNITY OUTREACH COMMITTEE .....	<a href="#">11</a>
EDUCATION PROGRAMS UPDATE .....	<a href="#">13</a>
TRUSTEE UPDATE .....	<a href="#">16</a>
CCASLA UPDATE .....	<a href="#">19</a>
MEMBERSHIP UPDATE/ANNIVERSARIES .....	<a href="#">22</a>

ASLASD UPCOMING EVENTS .....	<a href="#">24</a>
ASLA EXECUTIVE COMMITTEE .....	<a href="#">26</a>
CCASLA & NATIONAL EXECUTIVE COMMITTEE .....	<a href="#">27</a>
SPONSORS .....	<a href="#">29</a>



# PRESIDENT'S MESSAGE

---



ABOUT THE AUTHOR  
**KATHRYN KANAAN, ASLA**  
PRESIDENT

Welcome spring and the balance of day and night. Do not know how you feel, but this is when I start getting excited about the beach, vacations, and more time to play. So many fun things coming our way and speaking of playing, I would like to **thank Anthony Kenaston and Dave Bang Associates** for an **amazing kickoff event at Punch Bowl Social**. We had about 55-60 members, sponsors and guests present to start our year off right.

I am grateful for an amazing Board who take their roles seriously, work hard, and have enabled us to run smoothly while we look for new leadership. For those of you that were not at the kickoff event, **we have a new executive Director** and her name is **Amy Conrad with Conrad PR**. We are beyond excited and if you want to know more about her, see her bio in this newsletter or give her a call.


We are beginning our busy months with Landscape Architecture Month and Instagram Take Over. Please take a daily look at Instagram for there are some amazing projects and sponsor previews, and don't forget to take a regular look at our calendar on the website for fun events coming up.

<https://www.asla-sandiego.org/events/month/>

If anyone loves to promote the practice, **Advocacy Day for all CA Chapters is coming up**. We are determining what this will look like, if this will be a virtual event as last year or back to in person as years prior. Either way it is really fun to speak with our legislators or key staff. ASLA gives us all the leave behind information, we just need to find common ground with them and promote our profession which is easy to do with the amount of talented people we have in San Diego. Please volunteer this year, you will not regret it.

If speaking to state legislators is not your thing but you have an urge to work with and guide our local government, there are **many board positions in the City of San Diego** that are available and would benefit from Landscape Architect's abilities to see the big picture and be the bridge that leads to collaborative solutions. There are seats on the Climate Advisory Board, Historic Resource Board, Mobility Board and more! Apply here: <https://www.sandiego.gov/boards-and-commissions/list>





Looking forward we will be preparing for **next year's Board of Directors** so if you would like to join this awesome group please contact Amy to see what positions are open. Don't wait for us to ask you for we will, **jump on in with us, the water is nice** .

**Amy Conrad**  
[aslasd@asla-sandiego.org](mailto:aslasd@asla-sandiego.org)  
619-222-8155

"In the spring, at the end of the day, you should smell dirt." - Margaret Atwood

Get out there, put your feet in the dirt, toes in the sand, you know what on the grass and breath in peace!

**“IN THE SPRING, AT THE END OF THE DAY,  
YOU SHOULD SMELL DIRT.”**

- MARGARET ATWOOD



# WELCOME TO OUR NEW EXECUTIVE DIRECTOR

Amy comes with a lot of experience working in the green industry, including for the board of the California Licensed Contractors Association, San Diego chapter as well as for the state board and several other state-wide chapters of the CLCA. She has owned and operated a boutique public relations and marketing agency for 20 years where she has served several residential and commercial contractors, industry product manufacturers, nurseries and wholesalers.

Amy looks forward to serving ASLA San Diego's members, sponsors and community! Please reach out to her with any questions you have concerning the chapter – she aims to be helpful and welcoming!

Welcome Amy! We look forward to working with you!

Amy can be reached at [aslasd@asla-sandiego.org](mailto:aslasd@asla-sandiego.org) or via phone at 619-222-8155.



*Introducing our new*



## EXECUTIVE DIRECTOR AMY CONRAD



# T.B. PENICK & SONS, INC.

For more than a century, T.B. Penick & Sons, Inc. has been a trusted leader in providing innovative concrete materials and finishes to owners, architects, contractors, and specifiers like you. Our deep-rooted expertise allows us to deliver cutting-edge solutions that elevate the durability, aesthetics, and functionality of every project. Whether working on large-scale commercial developments, or intricate architectural designs, we are committed to delivering excellence through advanced construction techniques and unparalleled craftsmanship.

We take pride in collaborating closely with our clients, ensuring that each project reflects their unique vision while meeting the highest standards of quality and performance. From concept to completion, our team is dedicated to maintaining the integrity of your design intent. With meticulous attention to detail and a passion for innovation, we bring creative ideas to life, transforming ordinary spaces into extraordinary environments that stand the test of time.

Beyond craftsmanship and innovation, we recognize the growing importance of sustainability in today's built environment. Our advanced concrete solutions can help you achieve your sustainability goals, including lowering your project's carbon footprint. By integrating eco-friendly materials and durable finishes that reduce long-term maintenance needs, we contribute to greener, more resilient concrete. Our expertise in sustainable design ensures that your project aligns with environmental best practices without compromising quality or aesthetic appeal.

At T.B. Penick & Sons, Inc., we believe in building lasting relationships founded on trust, integrity, and shared success. We look forward to partnering with you, providing the knowledge and resources necessary to turn your vision into reality. From assisting with specification writing and no-cost sample development to cost budgeting and full project installation, we are committed to making the process seamless and efficient. Our expertise ensures that your project is not only beautiful and functional but also cost-effective and environmentally responsible. Together, we can create spaces that stand the test of time while meeting the highest standards of quality and sustainability.



**SINCE 1905, WE'VE BEEN ENSURING YOUR DESIGN INTENT IS REALIZED.**

Schedule a presentation or showroom visit and put our expertise to work on your next project.

Call Marketing at 858-558-1800. Find us on 

[www.TBPenickICS.com](http://www.TBPenickICS.com)





# CONNECTING COMMUNITIES TO CLIMATE ACTION



ABOUT THE AUTHOR

**Ashlie Zinn, ASLA**

CLIMATE ACTION COMMITTEE CO-CHAIR



ABOUT THE AUTHOR

**Stephanie Green, ASLA**

CLIMATE ACTION COMMITTEE CO-CHAIR

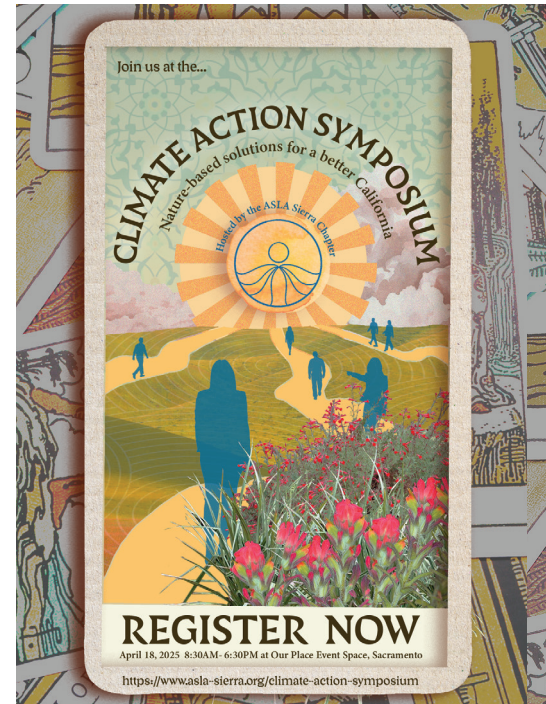
Climate action starts with connection—linking people to nature, sustainable practices, and each other. Across California and San Diego, landscape architects are driving initiatives that strengthen these connections and advance climate resilience.

## A Key Moment for Climate Leadership

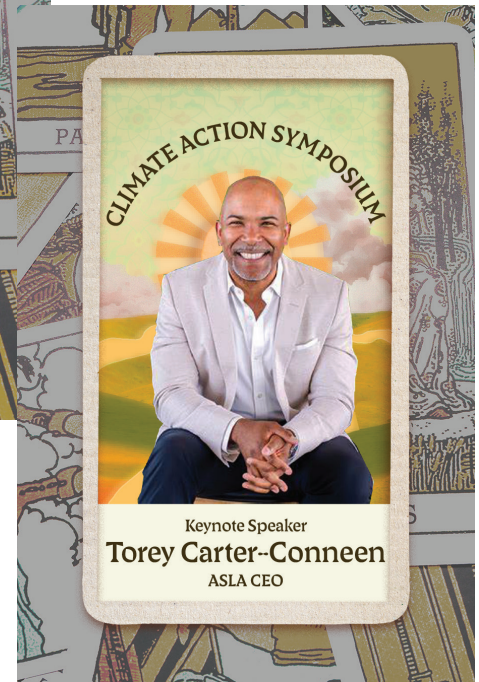
An exciting opportunity to engage in this conversation is the upcoming [ASLA Sierra Chapter's Climate Action Symposium](#) on **Friday April 18, 2025**, at **Our Place Event Space in Sacramento**. This event brings together experts in climate policy, resilience, and biodiversity, offering a chance to connect, learn, and contribute to shaping a more sustainable future.

Featured speakers include:

- ✓ **Meghan Hertel**, CA Deputy Secretary for Biodiversity and Habitat
- ✓ **Lisa Lien-Mager**, CA Deputy Secretary for Forest and Wildfire Resilience
- ✓ **Torey Carter-Conneen**, ASLA CEO, discussing the national role of landscape architects in climate action



**Registration is open**, with group discounts available for firms and organizations registering three or more attendees.





## Driving Change in Urban Forestry

One of the symposium's sessions will introduce an initiative that ASLA San Diego's Climate Action Committee has been actively involved with:

### "Growing the Future: Advancing Nursery Stock Quality for Resilient Urban Forests."

Presented by our working group partners **Brian Kempf (Urban Tree Foundation)** and **David Teuschler (Devil Mountain Wholesale Nursery)**, this session will highlight the urgent need to improve nursery tree stock standards and explore collaborative solutions.

#### Why This Matters

Healthy, resilient urban forests start with high-quality nursery stock. Poorly grown trees struggle to establish and thrive, reducing the ecological and climate benefits they provide. This session will offer practical insights into how landscape architects can drive meaningful improvements in the nursery industry.

#### What You'll Learn:

- ✓ The impact of nursery stock quality on urban tree health and ecosystem services
- ✓ Challenges in current nursery production and pathways for improvement
- ✓ Strategies to engage with nurseries and advocate for higher growing standards
- ✓ Best practices for specifying, selecting, and inspecting nursery stock
- ✓ Sustainability in Action: Local Efforts in San Diego

## Sustainability in Action: Local Efforts in San Diego



Closer to home, hands-on sustainability initiatives are making a tangible impact. At **Memorial Senior Center**, co-chair **Ashlie Zinn** has been leading a community food-growing effort—cultivating squash, peppers, leafy greens, and more to support future **garden-to-table cooking and craft workshops** through further development of the City's Agewell & Therapeutic Recreation Services **Green Thumb Club**.





The final planting is scheduled for the **grand opening on March 28**, marking a milestone in this regenerative project. Built using the **Hügelkultur** method and enriched with compost from the **City's Green Waste Recycling program**, the garden fosters healthy soil and long-term sustainability. Collaboration with the local Ignite Roots volunteer group has supported both the initial planting and the ongoing care of the waterwise native and succulent exterior landscape, which continues to grow through hands-on propagation. Seeing community members light up as they learn and contribute has been truly inspiring.

## Lakeside's River Park Conservancy Needs You!

Another approaching milestone—2026 will mark [Lakeside's River Park Conservancy's 25th Anniversary](#), and they could use your help and expertise in planning and executing the commemorating event! If you are interested in contributing to this highly-anticipated celebration of San Diego River Restoration, please reach out to [Julie](#) to get involved.



In the meantime, keep an eye out for the Conservancy's brand-new website, showcasing their incredible work over the past two decades, and stay tuned for their **Field Station** opening later this year—an exciting new hub for educational and cultural opportunities in our community!

## Get Involved!

As landscape architects, our work extends beyond design—it's about fostering ecological stewardship and resilience. Whether through policy discussions or hands-on projects, your voice and expertise matter.

### Upcoming Opportunities:

**April 18** – ASLA Sierra Climate Action Symposium (Sacramento) [Register](#)

**April 22** – California Climate Policy Summit 2025 (Sacramento) [Register](#)

**May 22** – California Green Building Conference (San Francisco) [Register](#)

### Ongoing Initiatives:

**City of San Diego's Mobility Master Plan** (October 2024 Draft)  
– Available for review & comment [Review Here](#)

Lakeside's River Park Conservancy Nature Walks – Twice monthly, Saturdays 8–10 AM [Register](#)

Surfrider SD's Monthly Climate Change Program Meeting [Register](#)

Tree San Diego's "Tree Treks" – Guided arborist tree walks (2nd Saturday each month) [Schedule & Register](#)

Tree San Diego's Monthly Free Tree Distribution [Info](#)

If you're interested in joining local efforts—or have initiatives to share—we'd love to hear from you!

**Stay connected, stay engaged, and let's keep the momentum going.**



# VOLUNTEERS NEEDED!



ABOUT THE AUTHOR

**Difan Chen, ASLA**

VP COMMUNITY OUTREACH

Join us at Cuyamaca College located at 900 Rancho San Diego Parkway, El Cajon, CA 92019 on Saturday, May 3rd from 9:00 am to 3:00 pm for the Annual Spring Garden and Butterfly Festival.

Cuyamaca Spring Garden Festival is one of the most popular festivals in San Diego. Annual attendance now exceeds 7,000 community visitors. The Spring Garden Festival began in 1993 as the Urban Forest Field Day, an outreach activity for the Arboriculture students from Cuyamaca College. Today the festival features fun programs, local artisans, hundreds of vendors and exhibitors which make this a popular spring destination for families and homeowners.

ASLA San Diego will be there and educate community members about what landscape architects do and how to conserve our precious resources. Volunteers are needed at our booth, and we hope to see you there!

To sign up for this volunteer opportunity, please feel free to contact Difan Chen, VP of community outreach committee by [difanchen752@gmail.com](mailto:difanchen752@gmail.com). Thank you very much!

**SPRING**  
Garden & Butterfly  
Festival

**Saturday May 3rd**  
9am - 3pm  
900 Rancho San Diego Pkwy, El Cajon  
Cuyamaca College

- Plant Sales
- Craft Vendors
- Butterfly Releases
- Food Trucks
- Live Music
- Family Activities

**FREE ADMISSION** **FREE PARKING**

HERITAGE OF THE AMERICAS MUSEUM  
COYOTE MUSIC FESTIVAL  
CUYAMACA COLLEGE ORNAMENTAL HORTICULTURE  
www.thegarden.org  
CUYAMACA COLLEGE

**LEARN MORE**



# SAN DIEGO'S HIGHEST-QUALITY OUTDOOR RECREATION PRODUCTS

## LET US HELP YOU DISCOVER THE FUN

Coast Recreation represents the finest manufacturers in the outdoor recreation industry. Whether you are looking for outdoor shade systems, site furniture, playground equipment or surfacing, we are here to help.

We also offer tailored Lunch and Learn or CEU sessions to expand your team's knowledge and development. Contact us to arrange these sessions and benefit from valuable insights and education.



Phone : 714-619-0100

Mail : [info@coastrecreation.com](mailto:info@coastrecreation.com)

Website : [www.coastrecreation.com](http://www.coastrecreation.com)





# EDUCATION PROGRAMS UPDATE



ABOUT THE AUTHOR

**Kenya Huezo, ASLA**

VP EDUCATION PROGRAMS

## Hello ASLA San Diego Chapter members and Happy Spring!

As we welcome longer days and warmer weather, we are happy to look ahead to exciting lecture events planned for later this year. After attending the 2024 ASLA National Conference in Washington DC last Fall, I left inspired by our friends and colleagues speaking about exciting projects from around the country, new research findings, and interesting trends in the industry. A key theme at the forefront of last year's national conference and one that will continue to draw interest and attention includes climate action, resilience, and decarbonization. As an example, one of the first education sessions I attended and a session I found particularly engaging included the topic of concrete, including practical and effective ways to reduce concrete waste in a project, ways to reduce the carbon cost of cast in-place concrete, and types of concrete that can make projects more sustainable. Another education session I attended presented campus landscapes with an emphasis on enhancing climate resilience, sociability, and well-being by developing partnerships with allied design and construction professionals to transition campuses to a more sustainable model, balance sites of memory and tradition with

the current conditions for growth, climatic concerns, and sustainability, design for the full student and campus community with sociability, well-being, inclusivity, and equity goals in mind, and expanding the definition of a resilient campus to include ecological health.

I want to also bring to your attention to important resources that were shared and made available to ASLA members. As part of its 2022-2025 Climate Action Plan, ASLA released new reference guides for designers to integrate decarbonization strategies into the design process: "Decarbonizing the Design Process: A Phase by Phase Approach for Landscape Architects" by Alejandra Hinojosa and Mariana Ricker and "Decarbonizing Specifications: Guidelines for Landscape Architects, Specifiers, and Landscape Contractors" by Chris Hardy, Alejandra Hinojosa, Bryce Carnehl, and Elizabeth Moskalenko. The Phase by Phase Approach offers designers with information on integrating decarbonization strategies into the landscape design



## EDUCATION PROGRAMS UPDATE (CONT.)

process. Developed for landscape architects, it offers **big ideas, strategies, best practices, and tools** to reduce carbon emissions at each stage of design and construction. It is a high-level guide, offering approaches that can be implemented regardless of project type, scope, and scale. The Decarbonizing Specifications includes simple, detailed, and directly applicable guidelines for how to reduce the embodied carbon of projects. More information on these resources can be found on ASLA's Climate Action Plan website: <https://www.asla.org/climateactionplan.aspx>.

**More information will follow in the next newsletter regarding details about the 2025 education lecture series.** In the meantime, if you have any specific lecture topics or speakers you are interested in learning more about, feel free to provide your ideas and feedback for future events!

# 2025 KICKOFF PHOTOS









# TRUSTEE UPDATE



ABOUT THE AUTHOR

**Jon Wreschinsky, PLA, ASLA**

CHAPTER TRUSTEE

I want to take a moment to thank each of you for your confidence in electing me as your new trustee. I will work diligently to represent yours and the Chapter's interests at the national level and keep you informed of important endeavors ASLA is conducting to strengthen our profession.

ASLA has decided to focus on several topics: Climate Change, Funding & Taxes, and Design Freedom. Specifically, it will concentrate on Diversity and Business (tariffs). ASLA's commitment to inclusion, equity, and diversity in all actions and programs reflects its belief that diversity benefits everyone. It is essential to continue emphasizing its importance to the organization, the work our members do, and the communities we serve.

Building on the first message to ASLA members and stakeholders, [Steadfast in Our Vision: Shaping a Resilient Future](#), which outlines our values, ASLA plans to expand its public messaging to include its strategy and actions. This effort begins with social media posts on five key topics, clearly stating our values and positions and listing actions taken so far. A landing page on ASLA.org will also share this information, aiming to show how our ongoing work connects to these issues based on the latest available guidance.

In light of this emphasis on advocacy, ASLA has developed a new leave behind: ["Landscape Architects Design Healthy, Safe, Resilient Communities."](#) Each of you is encouraged to utilize this document as a tool to help educate policymakers, clients, and the public about landscape architects and the many types of community infrastructure the profession designs. The document is editable to highlight your projects.

ASLA is also proceeding with the development of its new Climate and Biodiversity Action Plan for the landscape architecture community. The five-member task force and 33-member advisory group of climate and biodiversity leaders from the landscape architecture profession will guide this effort. The new plan will be released at the [ASLA Conference on Landscape Architecture, October 10-13, 2025, in New Orleans, Louisiana.](#)

Feel free to contact me if you have any questions.

**CONTACT JON**



**reproHAUS**  
COMPUTER

**GRAND FORMAT**  
BANNERS  
WINDOW GRAPHICS  
BUILDING WRAPS  
WALL MURALS  
FLOOR GRAPHICS  
TRADE SHOW  
BILLBOARDS  
VEHICLE WRAPS

**SIGNAGE**  
WAYFINDING  
RETAIL  
ADVERTISING  
COMMERCIAL  
CONSTRUCTION  
3D SIGNAGE  
DECOR  
REAL ESTATE

**3D PRINTING**  
PROTOTYPING  
MODELING  
CMYK FULL COLOR  
HIGH DEFINITION  
ENHANCED ACCURACY  
PHOTO REALISTIC  
ECO-FRIENDLY  
FAST TURNAROUND

**TECH SERVICES**  
DIGITAL  
DEVELOPMENT  
MANAGED PRINT  
FACILITIES MANAGEMENT  
DOCUMENT MANAGEMENT  
IT SERVICES

ORDER ONLINE: [WWW.REPROHAUS.NET](http://WWW.REPROHAUS.NET)

Facebook | Twitter | LinkedIn

since 1979  
**dave bang**  
associates inc.

► park+playground outfitters

Our company successfully guides landscape architects to the perfect park and playground solution.

Together we create magnetic environments where deep human connection takes place, adventure is found, and an inclusive community is formed.

[davebang.com](http://davebang.com)

► One Stop Shop For All The Best Brands

PLAYWORLD The world needs play!  
Berliner Play equipment for life  
earthscape  
AMERICANA OUTDOORS  
FORMS+SURFACES  
cre8play  
P.U. 20th Anniversary  
And Many More..  
WARASH VALLEY

1800.669.2585  
P.O. Box 1088, Tustin, CA 92781

**modern**  
BUILDERS SUPPLY

**SDLA**  
San Diego Lighting Associates

5625 RUFFIN RD, STE 100, SAN DIEGO, CA 92123  
[WWW.SANDIEGOLIGHTING.COM](http://WWW.SANDIEGOLIGHTING.COM)  
@SDLA\_LANDSCAPE  
OFFICE: 858-505-1055





ABOUT THE AUTHOR  
**Phil Armstrong**  
CCASLA



ABOUT THE AUTHOR  
**Rich Risner**  
CCASLA



The ides of March has passed, the clock has sprung forward and it's spring-time in America's Finest City! CCASLA continues to be the chapter's voice in Sacramento as another legislative session is well underway. The legislative bill introduction deadline was on February 21st. Over half of the bills that were introduced this year were introduced during the 3rd week of February. There have been many wildfire bills introduced this year as response to the LA conflagrations in January. Though thus far, most of those are dealing with vegetation cleanup and management in forest areas or around power lines. The CCASLA board recognizes the wildland fire issue is perhaps the tip of a new paradigm 'iceberg' that will foster new policy changes to our industry just as the prolonged years of drought did in ushering changes to irrigation design in the early 1990's.

### **So how's your Zone Zero?**

Recently, CalFire provided an overview of the state's wildfire prevention efforts, focusing on Zone 0, which refers to the critical area within 5 feet of a building or structure in the

Wildland-Urban Interface(WUI), where human development meets wildland vegetation. This zone is essential for creating defensible space to prevent wildfires from spreading to homes. The primary goal in Zone 0 is to reduce the risk of ignition from direct flame contact or embers, which can accumulate at the base of structures. To achieve this, CalFire believes all combustible materials—including dry leaves, grass, overhanging branches, wood mulch, and combustible fences—must be removed. It is recommended to use non-combustible hardscaping materials, such as rock, gravel, or pavers, and to ensure gutters and vents are clear and protected from ember intrusion.

The Chief Engineer at the Insurance Institute for Business & Home Safety (IBHS), presented their research findings, highlighting that removing vegetation in Zone 0 can nearly double a property's chances of surviving wildfire. The IBHS developed the "Wildfire Prepared" program, which encourages homeowners to establish a 5-foot non-combustible buffer



around their homes by removing all vegetation, including overhanging branches, and replacing combustible materials like wood mulch with non-combustible alternatives such as rock or pavers. The State has enacted legislation to enforce many of these IBHS research findings, particularly for newly constructed homes. Additionally, the California Legislature allocated \$50 million in Proposition 4 funding for wildfire prevention programs, including a financial assistance program to support homeowners in meeting the Zone 0 requirements. Some specific recommendations for acceptable materials and practices in Zone 0 are being considered. For example, mature trees with branches at least 10 feet above roof peaks and chimneys are permissible in Zone 0, while synthetic lawns and certain decorative structures, such as overhead patio structures, trellises or pergolas, are not. The primary focus of Zone 0 is to eliminate materials that could contribute to the spread of fire to the house structure, including combustible mulch, wood fencing/gates, woodsheds, potted plants in

flammable pots, outdoor kitchens, HVAC systems, BBQs, pet structures, and the proper storage of recyclables and trash.

These legislative actions will give Landscape Architects the opportunity to educate clients/homeowners on managing all the wildfire risks associated with their project

CCASLA continues to monitor bills and other policy shifts coming from Sacramento. The board is currently monitoring bills that impact our industry in the state Assembly and Senate. Most legislation has had one reading in committee prior to a floor vote in either Assembly or Senate before moving to the other house. Here's a highlight of the bills we are currently tracking. CCASLA will be taking positions of 'support', 'neutral', or 'oppose' on these bills at our March meeting and we will keep you all updated in the next newsletter. We encourage all members to peruse the legislative bills for more details at: <https://legiscan.com/CA/bill/>

---

## CURRENTLY MONITORED BILLS

---

### **AB 491 - Connolly**

Introduced: 2/10/2025

California Global Warming Solutions Act of 2006: climate goals: natural and working lands. The bill proposes modification to the Act of 2006 to include green alternatives for carbon sequestration.

### **AB 507 - Haney**

Introduced: 2/10/2025

Adaptive reuse: streamlining: incentives.

### **AB 638 - Rodriguez**

Introduced: 2/13/2025

Stormwater: reuses: irrigation. The bill would require the guidance to include, but not be limited to, the use of captured stormwater for irrigation to offset the use of potable water, as specified, and criteria including, among other things, pathogens and pathogen indicators and total suspended solids.

### **AB 667 - Solache**

Introduced: 2/14/2025

Professions and vocations: license examinations: interpreters.

## CCASLA CURRENTLY MONITORED BILLS (CONT.)

### **AB 742 – Elhawary**

Introduced: 2/18/2025

Department of Consumer Affairs: licensing: applicants who are descendants of slaves.

### **AB 759 - Valencia**

Introduced: 2/18/2025

Architects: architects-in-training. This bill would authorize a person to apply to the CA board and obtain authorization to use the title "architect-in-training" after they have been identified as a candidate for licensure by the board and have successfully passed at least one division of the Architect Registration Examination.

### **AB 900 - Papan**

Introduced: 2/19/2025

Environmental protection: 30x30 goals: land conservation: This bill would establish the California Biodiversity Collaborative with a goal of conserving at least 30% of the state's lands and coastal waters by 2030.

### **AB 945 - Fong**

Introduced: 2/19/2025

Density Bonus Law: incentives and concessions: green housing developments. The bill would modify the existing Density Bonus Law and require a city or county to grant additional incentives or concessions when an applicant proposes to construct a green housing development as defined in the bill.

### **AB 1226 - Essayli**

Introduced: 2/21/2025

Air quality: wildland vegetation management burning: permits: exemption.

### **AB 1467 - Hoover**

Introduced: 2/21/2025

Residential property insurance: tree fire risks. This bill would exempt a residential property insurance policyholder from state and local laws, ordinances, fees, and fines associated with the removal of a tree if their insurer identifies the tree as a fire risk and the Department of Forestry and Fire Protection confirms that the tree is a fire risk.

### **SB 326 – Becker, Laird, Stern**

Introduced: 2/11/2025

Wildfire safety: The California Wildfire Mitigation Strategic Planning Act.

### **SB 499 - Stern**

Introduced: 2/19/2025

Fire prevention: home hardening: defensible space: data usage. This bill would strengthen existing code and agency oversight in assessing defensible space for fire protection.

### **SB 556 - Hurtado**

Introduced: 2/20/2025

Habitat enhancement and restoration: floodplains.

### **SB 614 - Stern**

Introduced: 2/20/2025

Potable water: nonfunctional turf. Current law from AB1572 prohibits the use of potable water for nonfunctional turf located on common areas of properties of homeowners' associations and similar properties starting January 1, 2029. This bill would prohibit that use of potable water one year earlier.

### **SB 653 - Cortese**

Introduced: 2/20/2025

Wildfire prevention: environmentally sensitive vegetation management.

### **SB 795 - Richardson**

Introduced: 2/21/2025

30x30 goal: state agencies: plans, policies, or regulations.



# 2025 ANNUAL GOLF TOURNAMENT MADERAS OCTOBER 27

## BECOME A SPONSOR TODAY!

- ✓ TITLE CO-SPONSOR
- ✓ DINNER SPONSOR 1-3
- ✓ LUNCH SPONSOR
- ✓ BEVERAGE CART
- ✓ TEAM SCORE
- ✓ CLOSEST TO THE PIN (W/M)
- ✓ LONGEST DRIVE WOMEN
- ✓ LONGEST DRIVE MEN
- ✓ PUTTING CONTEST
- ✓ DRIVING RANGE - BLOODY MARY BAR
- ✓ PAR 4 & 5 / ALCOHOL
- ✓ PAR 4 & 5

 [Click here](#) to REGISTER TO BE A SPONSOR



# MEMBERSHIP UPDATE



ABOUT THE AUTHOR

**Nikki Remmel, ASLA**

VP, MEMBERSHIP

We wish all of our members a happy Spring.  
Thanks for your continued support of the ASLA  
San Diego chapter! Please feel free to reach out  
if you have any questions on your membership.

Welcome to our new and returning members!

Adriana Calderon, Student ASLA  
Polina Karake, Student ASLA  
Marvin Saintrose, Student ASLA  
Jordan Lail, ASLA  
Bruce Kirschenbaum, Affiliate ASLA  
Hadasa Villalta, Student ASLA  
Tano Alejandra, Student ASLA  
Isabella Lim, Student ASLA  
Chloe Ewart, Student ASLA  
Sally Laux, Student ASLA  
Sara Kamenski, Student ASLA  
Maximilian Singer, Student ASLA  
Joshua Quintanilla, Student ASLA  
Tinatin Mandaria, Student ASLA  
Clinton Chaisson, Student ASLA  
Taylor Ang, Student ASLA  
Sofia Ribeiro, Student ASLA  
Claire Haverkamp, Student ASLA  
Paolina Michel, Student ASLA  
Jaime Sandoval, ASLA  
Loren Phillips, ASLA  
David Skalka, Affiliate ASLA

# MEMBERSHIP

## 1 - 5 YEARS

Maria Lopez Vazquez, Student ASLA  
Nathan Fadick, Student ASLA  
Adis Tutusic, ASLA  
Scott Cohen; Melissa Zepeda, Affiliate ASLA  
Leila Laurmann, Student ASLA  
Katrin Fulleman, Affiliate ASLA  
Kristoffer Vestre, Affiliate ASLA  
Riccardo Gavardoni, Student ASLA  
Isabella De La Mora, Student ASLA  
Kimberly Ussery, Student ASLA  
Liera Ana, Student ASLA,  
Pejman Taghavizargar, Student ASLA

## ● 6 - 10 YEARS

Jay Rohrer, ASLA  
Byron Brink, ASLA  
Richard Barrett, ASLA  
Kristi Lin ASLA  
Christhian Barajas, ASLA  
Mark Moss, ASLA

## ● 11 - 20 YEARS

Jonathan Austin, ASLA  
Mario Magallanes, ASLA  
Joe Dodd, ASLA  
Todd Schechinger, ASLA

## ● 21 - 30 YEARS

Joel Harms, ASLA  
Kent Wilson, ASLA  
David McCullough ASLA  
Kyle Fiddelke, FASLA  
Todd Pitman. ASLA  
Jennifer Montgomery, ASLA  
Richard Risner ASLA  
Jonathan Romero, ASLA

## 31 + YEARS ●

Frank Kawasaki  
Roger DeWeese, FASLA  
William Briggs, ASLA  
Dennis Otsuji  
Vicki Estrada, FASLA  
Joseph Chisholm  
Richard Garbini  
Don Thibedeau  
Mark Steyaert  
Jon Becker, ASLA  
Deborah Sharpe ASLA  
Maria Marquez  
Bruce Rudd, ASLA  
Doug Livingston, ASLA  
James Taylor, ASLA  
Martin Schmidt, ASLA  
Lawrence Sheehan, ASLA  
Joseph Esposito, ASLA





# UPCOMING EVENTS & MEETINGS

## APRIL

- 1-30



**WORLD  
LANDSCAPE  
ARCHITECTURE  
MONTH**  
APRIL 2025 | BEYOND BOUNDARIES
- 1-30

**LAM INSTAGRAM TAKEOVER  
SPOTS FULL!**
- 16

**EXECUTIVE COMMITTEE MEETING  
6PM | GROUNDED LA**  
200 N. Cedros Ave, Solana Beach,  
CA 92075

## MAY

- TBD

**STATE ADVOCACY DAY**
- TBD

**EP – ONLINE PORTFOLIO REVIEW**
- 2-3

**ASLA NATIONAL MID-YEAR  
VIRTUAL MEETINGS (BOT AND CPC)**
- 3

**SPRING GARDEN BUTTERFLY  
FESTIVAL – FREE!**
- 21

**EXECUTIVE COMMITTEE MEETING  
6PM | GROUNDED LA**  
200 N. Cedros Ave, Solana Beach,  
CA 92075
- TBD

**MODERN BUILDERS SUMMER  
SOLSTICE**

## JUNE

- TBD

**EP – ONLINE PORTFOLIO REVIEW**
- 1

**COMMUNITY GRANT  
APPLICATIONS SENT DUE  
IN AUGUST**

**EMAIL APPLICATION**
- 18

**EXECUTIVE COMMITTEE MEETING  
6PM | STUDIO WC**  
515 Encinitas Blvd #201, Encinitas,  
CA 92024
- 20

**SUMMER NEWSLETTER ARTICLES  
& SPONSOR ADS DUE**

**CHECK OUT OUR WEBSITE** FOR ALL OUR CURRENT & UPCOMING EVENTS

**ASLASD EVENTS**



# PAID VOLUNTEER OPPORTUNITY

**EMAIL IF INTERESTED**

## SEEKING SUBJECT MATTER EXPERTS FOR CSE DEVELOPMENT

During the 2-day workshops in Sacramento, SMEs write test questions, review and revise test questions, construct test forms, and decide the passing score for the test.

Subject Matter Experts (SMEs) attending the workshops should:

- Be currently licensed & in good standing;
- Be currently working in the field with up-to-date skills;
- Not be working as an instructor or serving as a current board, bureau, or committee member;
- Reflect the profession in terms of geographic location, practice specialty area, ethnicity & gender.

SMEs are reimbursed for board-approved travel expenses & receive a daily honorarium of \$200.



# SAN DIEGO CHAPTER 2025 EXECUTIVE COMMITTEE

## **PRESIDENT**

**Kathryn Kanaan, ASLA**

KDA Landscape Architects  
619.840.5174

## **PRESIDENT ELECT – FUNDRAISING**

**Brad Lents, ASLA**

Spurlock Landscape Architects

## **SECRETARY**

**Alexander Wade, ASLA**

Rick Engineering  
619.291.0707

## **PAST PRESIDENT**

**Jacqueline Higgins, ASLA**

Forever Balboa Park  
619.331.1920

## **VP COMMUNITY OUTREACH**

**Difan Chen, ASLA**

KTUA Landscape Architecture & Planning  
607.793.8866

## **VP PROGRAMS/EDUCATION**

**Kenya Huezio, ASLA**

LPA  
619.795.2555

## **PROGRAMS/SOCIAL CHAIR**

**TBD**

## **VP VISIBILITY/COMMUNICATIONS**

**Trista Garcia Silvia, ASLA**

StudioWC Architecture + Engineering

## **CHAPTER TRUSTEE**

**Jon Wreschinsky, PLA, ASLA**

San Diego Unified School District

## **CALIFORNIA COUNCIL OF ASLA**

**Phil Armstrong, ASLA**

The Lightfoot Planning Group  
760.692.1924

**Marty Schmidt, ASLA**

Environs  
619.232.7007, ext. 101

## **EMERGING PROFESSIONAL CO-CHAIRS**

**Gwen Stark, ASLA**

KTUA  
619.294.4477

**Fernanda Suarez, ASLA**

MIG  
619.682.3841

## **CLIMATE ACTION COMMITTEE**

**Stephanie Green, ASLA**

Landscape Architect  
619.630.8730

## **GOLF COMMITTEE CO-CHAIRS**

**Kathryn Kanaan, ASLA**

KDA Landscape Architects  
619.840.5174

**Gregg Roesink**

Hunter Industries  
760.703.2474

**Brad Lents, ASLA**

Spurlock Landscape Architects

## **PUBLIC SPACES ADVOCACY COMMITTEE**

**Wei Wang, ASLA**

Van Dyke Landscape Architecture  
858.504.0392

## **EXECUTIVE DIRECTOR**

**Amy Conrad**

Conrad Public Relations & Marketing  
619-222-8155

## **ASLASD NEWSLETTER DESIGNER**

**Kari Cureton**

Sarit + State Creative Studio  
619.318.3454



## ASLA NATIONAL EXECUTIVE OFFICERS

### **PRESIDENT**

Kona Gray, FASLA

### **PRESIDENT ELECT**

Bradey McCauley, FASLA

### **IMMEDIATE PAST PRESIDENT**

SuLin Kotowicz, FASLA

### **CEO**

Torey Carter-Conneen

### **VP PROFESSIONAL PRACTICE**

Jean Senechal Biggs, ASLA

### **VP COMMUNICATIONS**

Monique Bassey, ASLA

### **VP EDUCATION**

Ashley Steffens, ASLA

### **VP FINANCE**

Chris Della Vedova, FASLA

### **VP GOVERNMENT AFFAIRS**

Om Khurjekar, ASLA

### **VP MEMBERSHIP**

April Westcott, FASLA

### **SECRETARY**

Curt Millay, ASLA

### **TREASURER**

Greg Cohen

### **PARLIAMENTARIAN**

Susan Jacobson, ASLA

## CALIFORNIA COUNCIL OF ASLA 2025 EXECUTIVE BOARD

### **SIERRA CHAPTER**

Andrew Wickham, ASLA (Co-Secretary)  
916.287.2326

Dalton La Voie, ASLA (Co-Secretary)  
916.669.5913

### **SOUTHERN CALIFORNIA CHAPTER**

David Tatsumi (Co-Treasurer)  
949.453.9901

Stephanie Landregan, ASLA  
(Co-Treasurer)  
310.825.1735

### **SAN DIEGO CHAPTER**

Phil Armstrong, ASLA (Gov't Affairs)  
760.415.24.26

Marty Schmidt, ASLA (Gov't Affairs)  
619.275.3003

### **NORTHERN CALIFORNIA CHAPTER**

Justin Richardson (Vice President)  
415.285.3614, x509

Brodie Hegg, ASLA (President)  
209.652.9399

### **LOBBYISTS**

Jason Ikerd  
Edelstein Gilbert Robson & Smith, LLC  
916.443.6400

### **LATC CHAIRMAN**

Pamela Brief  
818.726.0456

### **LATC EO/PROGRAM MANAGER**

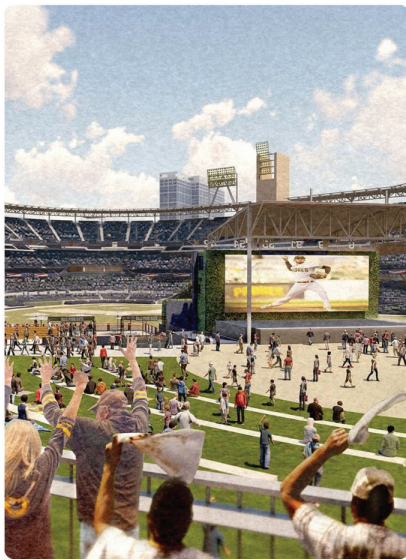
Laura Zuniga  
916.575.7230

### **CCASLA EXECUTIVE DIRECTOR**

Vicki Phillipy  
714-267-5281

[cc-asla.org](https://cc-asla.org)





# WORLD LANDSCAPE ARCHITECTURE MONTH

APRIL 2025

WORLD LANDSCAPE  
ARCHITECTURE MONTH (WLAM)  
IS DEDICATED TO SHOWCASING  
AND CELEBRATING HOW  
LANDSCAPE ARCHITECTS DESIGN  
HEALTHY, BEAUTIFUL AND  
RESILIENT PLACES FOR ALL  
WORLDWIDE.

2025 THEME: BEYOND BOUNDARIES

THIS YEAR, WE'RE HIGHLIGHTING  
HOW LANDSCAPE ARCHITECTS BREAK  
BARRIERS-- PHYSICAL, CULTURAL AND  
ENVIRONMENTAL-- TO SHAPE A  
BETTER FUTURE.



#WLAM



FOLLOW ALONG ON INSTAGRAM!



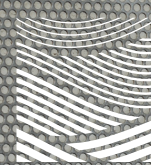


THANK YOU TO OUR **2025 SPONSORS**

**T.B. PENICK  
& SONS, INC.**



AGRI-SERVICE ► ANOVA ► BENCHMARK LANDSCAPE ► NATIVE WEST ► WEST COAST TURF



Connect with Us



[asla-sandiego.org](http://asla-sandiego.org)

Mailing Address:  
P.O. Box 8010  
San Diego, CA 92138