

# AS LA SD

DIGITAL NEWSLETTER  
SUMMER 2024



PRESIDENT'S AWARD: CHILDREN'S PARK SAN DIEGO  
SPURLOCK LANDSCAPE ARCHITECTS & SCHMIDT DESIGN GROUP





[asla-sandiego.org](http://asla-sandiego.org)

## VISION

A world where the built and natural environments coexist in harmony and sustainable balance, where all peoples can express their diverse heritage and their individual desires to grow and thrive; and where we, as a profession, can substantially contribute to the process of achieving these ends.

## MISSION

To lead, to educate and to participate in the careful stewardship, wise planning and artful design of our cultural and natural environments.

# IN THIS ISSUE

SUMMER 2024

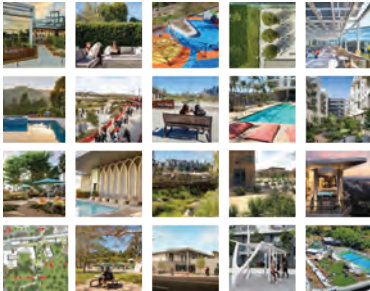


## 4 President's Message

JACKIE HIGGINS, ASLA



## 7 Retirement of Cheri Blatner-Pifer



## 8 Design Awards

MARTY ARMSTRONG, ASLA



## 9 Native Plant Talk with Native West Nursery



## 11 ASLA Teaches Students at Internship & Career Fair

DIFAN CHEN, ASLA



## 12 Boy Scouts Earn Landscape Architecture Badge

EMERGING PROFESSIONALS UPDATE .....	<a href="#">16</a>
MARTY ARMSTRONG LATC APPOINTMENT .....	<a href="#">17</a>
COMMUNITY GRANT UPDATE .....	<a href="#">18</a>
CCASLA UPDATE .....	<a href="#">18</a>
TRUSTEE UPDATE .....	<a href="#">22</a>

MEMBERSHIP UPDATE .....	<a href="#">24</a>
ASLASD UPCOMING EVENTS .....	<a href="#">26</a>
ASLA NATIONAL EXECUTIVE OFFICERS .....	<a href="#">28</a>
CCASLA EXECUTIVE BOARD .....	<a href="#">29</a>
SPONSORS .....	<a href="#">30</a>



# PRESIDENT'S MESSAGE

---



ABOUT THE AUTHOR  
**JACKIE HIGGINS, ASLA**  
CHAPTER PRESIDENT

## Happy Summer 2024!

May was a busy month with ASLA Advocacy Day on May 8th. San Diego Chapter president and president-elect joined our colleagues from the other California ASLA chapter to meet with Senate and Congressional staff in Washington, DC to educate our federal representatives about Landscape Architecture and the funding bills that directly affect the work we do for the community, the environment, and climate change mitigation.

On May 11th ASLA volunteers hosted another successful **scout merit badge event** at Point Loma Nazarene University. ASLA San Diego Chapter volunteers worked with 30 scouts to qualify them for a Landscape Architecture Merit Badge. Thanks to all our dedicated volunteers that made this successful!

On May 22nd ASLA members and colleagues got a sneak peek hard hat tour of the interior of the **Balboa Park Botanical Building and Gardens project** and heard firsthand from the design build contractor's team about the unique challenges and triumphs undertaken with this once in a lifetime historic restoration project. The tour was followed by a social event where we were able to catch up with our ASLA colleagues.

This tour as well as other ASLA events do fill up and sell out so we are looking to do more of these types of gatherings to support our members in learning and sharing ideas. If you have a project that you know folks are curious about and are willing to host a project tour, please let us know and ASLA will help organize and sponsor a social gathering.

**Your CCASLA representative Phil Armstrong** continues to advocate on the CCASLA Board with the next meeting on June 3rd to discuss the sunset review process and how a consolidation or merging the LATC into the CA Architects Board would affect Landscape Architects.

Coming up in June, is the **kickoff of our annual ASLA San Diego Community Grant**. Applications are being accepted from June 1st through the middle of August. [Please see our website for more details.](#)

## Other ASLA Events that you should mark your calendars for are:

- » Friday June 14th, EVERDE Fallbrook Farm tour
- » Wednesday June 20th San Diego ASLA Excellence in Design Awards at University of San Diego. Please join us to celebrate San Diego Landscape Architecture!
- » Wednesday July 10th Swing Social Golf and Sips Event sponsored by Belgard
- » Thursday July 25th Summer Heat Mixer sponsored by So Cal Shade Sails

For more details about our events and to RSVP please see our [website](#).

Participating in the San Diego ASLA Chapter board and committee positions is a rewarding and educational opportunity, please consider how you can add value to our ASLA community by volunteering for this next year, details of open opportunities are listed [here](#).

**ELECTION NOMINATION FORM**



# BRINGING YOUR DESIGN INTENT TO REALITY SINCE 1905.



*Old Town San Diego State Historic Park (San Diego, CA) (Lithomosaics), Directors Place – Interior (San Diego, CA) (Lithocrete Sedimentary Walls & Epoxy Cement System), Directors Place – Exterior (San Diego, CA) (Lithocrete Sedimentary Walls & Lithocrete), The Boardwalk at Science Center (San Diego, CA) (Quarried Stone Finish), San Diego Symphony - The Rady Shell at Jacobs Park (San Diego, CA) (Quarried Stone & Honed Concrete), Sunnyvale Sedimentary Wall (Sunnyvale, CA) (Lithocrete Sedimentary Walls)*

For more than a century T.B. Penick & Sons, Inc. has been providing owners, architects, contractors, and specifiers like you, with the most advanced technologies in concrete materials and finishes. We enthusiastically support your vision, bringing quality, craft, and long-term value to those projects you wish to create. We look forward to working with you, ensuring that your design intent is accurately realized each and every step of the way.



858-558-1800 | [www.TBPenickICS.com](http://www.TBPenickICS.com)  
LITHOCRETE® TERRAZZO SITE CONCRETE

**T.B. PENICK  
& SONS, INC.**





**ANNOUNCING**

# RETIREMENT OF **CHERI BLATNER-PIFER**

**After 42 years, the longest tenure of anyone from KTUA, Cheri Blatner-Pifer has announced her retirement.**

Cheri started part-time at KTUA in 1982 after graduating from SDSU with a Speech Pathology degree. Once she engaged in the profession, her interest was sparked and she started taking landscape classes at Mesa College to expand her knowledge, eventually becoming a licensed landscape architect. Since then, she's played an important role as a Senior Associate and leader in the company.

While at KTUA, Cheri worked on a variety of projects but was focused on the public realm including civic and park projects. She is passionate about making a positive impact on people's lives. She enjoyed creating solutions to the challenges that projects presented, the collaborative approach to design, and building genuine relationships with her clients, engineers, architects, and co-workers all of whom she will miss. We will miss her sense of humor and camaraderie.

As she finds herself with more free time, Cheri plans to continue to travel, spend more time with friends and family, improve her pickleball skills, revisit some lost creative outlets, and enjoy her time outdoors going on bike trips and walking.

The ASLA family wishes Cheri well. She also poured her energy into our school community through her work as a Mentor in the ACE Mentor program teaching the next generation about the joys of landscape architecture.

# CONGRATULATIONS TO **2024 CHAPTER DESIGN AWARDS** RECIPIENTS



ABOUT THE AUTHOR  
**MARTY ARMSTRONG**  
PAST PRESIDENT

The ASLA San Diego Excellence in Design Awards are the ultimate recognition of design achievement for landscape architecture firms and projects in and outside of the San Diego region. These awards celebrate the innovation and creativity found among the practitioners of landscape architecture.

The San Diego Chapter, American Society of Landscape Architects conducted the 2024 Design Awards Program to recognize professional excellence for outstanding works of landscape architecture and environmental planning.

Project entries were accepted from any individual, firm, non-profit organization, public agency or academic institution if one of the projects participants includes at least one of the following:

- San Diego Chapter, ASLA Members and Licensed Landscape Architect in the State of California (Projects at any location)

A total of 38 entries were submitted for review by a professional jury which included landscape architects, architects, designers and artists.

Top award projects were the President's Award to Children's Park with Spurlock Landscape Architects as Landscape Architect of Record and Schmidt Design Group as Design Landscape Architect. The entry for the San Diego Landmark Award by Schmidt Design Group for Cottonwood Creek Park was also chosen as the Climate Action Award recipient. Nine Honor Awards and 17 Merit Awards went to projects in various categories throughout the region.

A special Stewardship Award was also given to Anne Fege, who has spent decades serving our region on the City of San Diego's Regional Urban Forests Council and Kate Session Commitment (Healthy Trees for Healthy Neighborhoods) and has contributed to vast research and policy changes in how our region should properly grow and maintain our Urban Forest.

[VIEW PROJECTS & AWARD RECIPIENTS](#)





# NATIVE PLANT TALK WITH NATIVE WEST NURSERY

**Native West CEO, Patrick Montgomery was excited to host this event in their beautiful new retail/event space called “The Little Barn”; located directly across the street from their wholesale yard.**

With California Native Plants making up a larger and larger portion of all new landscape projects, members took the opportunity to better understand why California native plants are being specified and how to successfully select, install and maintain them. Native West Nursery strives to help contractors, gardeners and landscape architects navigate the process of creating thriving native landscapes that uniquely connect our designed landscapes with our spectacular wild places.

Native West highlighted a selection of particularly hardy native plant options which they believe will quickly become our favorites.





## HIGH QUALITY Outdoor Products

- Playground Equipment
- Shade
- Site Furniture
- Sports Equipment
- Surfacing
- Water Play



714.619.0100 or [coastrecreation.com](http://coastrecreation.com)



Discover the products  
to bring your vision  
to life!

Contact us today for more  
information.

# VOLUNTEER OPPORTUNITIES

## Get involved!

Volunteer on one of our committees or as part of the board! Meet other landscape architects and become part of our local landscape architecture community.

**VOLUNTEER FORM**



*leadership*  
grows here.



# ASLA TEACHES STUDENTS ABOUT THE PROFESSION AT INTERNSHIP AND CAREER FAIR



ABOUT THE AUTHOR

**DIFAN CHEN, ASLA**

VP COMMUNITY OUTREACH

ASLA San Diego participated in this year's Internship and Career Fair at MiraCosta College.

We were glad to see many students coming to our booth and chatting with us about the potential career of being a landscape architect.

We handed out the [ASLA National career brochure](#) which contained a good amount of information regarding full aspects of our profession.

Our volunteers (Chapter Past President, Martin Armstrong, Cisy Cao, representatives from Park West and I) were pleased to introduce what we do as landscape architects and contractors and share our passion with the next generation.

We truly appreciated everyone's presence and engagement at this event and eagerly anticipate next year's job and internship fair.



# BOY SCOUTS LANDSCAPE ARCHITECTURE MERIT BADGE



ABOUT THE AUTHOR  
**ANDREW HATCH**  
HATCHWORKS STUDIO

**On Saturday May 11th, the Scouts descended upon Point Loma Nazarene University for two days of Merit Badge University, an event where boys and girls from all over southern California are given the opportunity to earn several Merit Badges over the weekend.** The Landscape Architecture Merit Badge was offered as part of the curriculum, and to our delight the turnout was remarkably more robust than in the past several years.

Unfortunately, former chapter President Phil Armstrong, who for the past years developed and led the program, was unable to do so this year. But in typical Landscape Architect fashion, several of his teammates from past years stepped up to coordinate and lead the charge, filling the void. It was impressive to see the effect strong leadership had imparted on this new generation of leaders. We look forward to

spending the day again with Phil next year; but for this year, a huge applause is due for Trista Silvia, ASLA, Michael Tully, ASLA, and former chapter President, Patricia Ferman, ASLA.

As part of the course, the Scouts were introduced to the basic principles of Landscape Architecture including site layout, programming, and plant material. And, of course, they were informed that Central Park is the result of Landscape Architects, not natural phenomena.

Following an initial slideshow outlining the scope of the profession, we toured and discussed the recent landscape by Spurlock at Sator Hall. Using the site's beautifully designed landscape interventions as a proxy through which the breadth of the profession could be conveyed and absorbed by the youngsters, the team figuratively peeled back the surface layers to reveal the underlying co-mingling systems inherent, and often unseen by most, in the built environment. The students were able to use this example of a well-designed landscape as an introduction to the foundational design principles of Landscape Architecture, including sense of place, spatial sequencing, and ordering systems – essentially the interaction of function and form, laid bare.

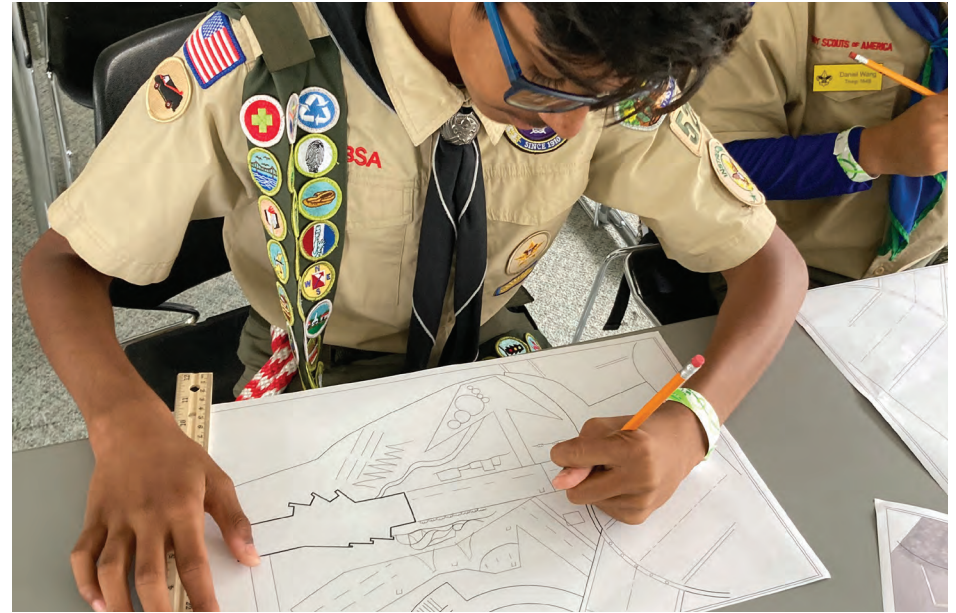






As the group walked the campus on a beautiful Spring day, the ocean glistening in the distance with surfers dancing on the waves, the Scouts observed various specimen trees and learned how to identify their significant characteristics. (There are some truly magnificent Torrey Pines on the campus, by the way.)

One of the merit badge requirements was to develop a new design for an existing small contemplative space adjacent to Prescott Prayer Chapel. The Scouts learned how to take field measurements and develop a basic base drawing. Then they were able to start designing, drawing, and communicating their designs. While the actual design deliverable was intended to be a homework exercise, many of the Scouts completed the task that day (perhaps foreshadowing future Landscape Architects?).



Another requirement challenged the Scouts to identify plant and tree species after another slide show illustrating common plants seen in the local landscape. Everde Growers generously donated roughly 20 of these plants for the event which allowed the Scouts to connect the images with the real thing. To our delight, after suggesting they touch and smell the plant material, the children seemed to perk up upon interacting with the rosemary and various salvias. After, when asked what their favorite plants were, unsurprisingly the overwhelming response was the rosemary and the salvias, while several independent minds selected the bougainvillea. Of course, we did not let them overlook the fact that the vibrant colors making the bougainvillea so popular in local landscapes was in fact not the flower but rather the bract, and pointed out the small white flowers encased by the bracts.



ONE OF THE MERIT  
BADGE REQUIREMENTS  
WAS TO DEVELOP A NEW  
DESIGN FOR AN EXISTING  
SMALL CONTEMPLATIVE  
SPACE ADJACENT TO  
PRESCOTT PRAYER  
CHAPEL.



At the conclusion of the day, the Scouts all put their names in a hat, and as their names were drawn, they each selected a plant to take home with them. The hope is that this gesture provides each of the participants with a memento that grows, evolves, and hopefully thrives – reminding them that as they grow, evolve, and hopefully thrive, there exist career paths to pursue outside of the most common and that not everyone needs to be doctors and lawyers one day (yet of course there is nothing wrong with those career paths). Finally, when asked the concluding question, So who wants to be a Landscape Architect when they grow up?, several Scouts enthusiastically raised their hands straight up into the air.

As for Phil's team, it is safe to say the answer was the same.



## Maglin Site Furniture Unveils the Urban Canopee Corolle

For over 40 years, Maglin Site Furniture has been at the forefront of creating high-quality, design-forward outdoor furniture. Our extensive collection includes benches, tables, seating, bike racks, and planters, all crafted with durability, aesthetics, and sustainability in mind. We are now excited to introduce the Urban Canopee Corolle to North American cities.

The Corolle is a groundbreaking solution designed to cool urban environments and combat the heat island effect. Its innovative design integrates climbing plants to create lush “Fresh Islands” within the cityscape. Engineered for resilience, Corolle’s lightweight, flexible composite canopy supports 10 to 16 feet of vertical greenery and provides shade up to 26 feet in diameter.

Corolle’s elegant planter bases are movable, transforming paved streets and plazas into pedestrian-friendly green spaces where traditional planting is limited. This makes Corolle perfect for urban centers, parks, university campuses, and rooftops where space flexibility is essential.

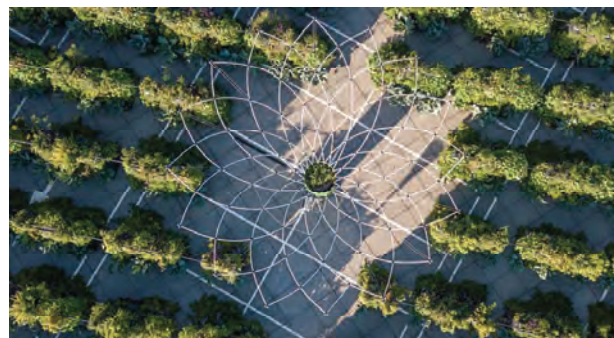
Beyond reducing temperatures, the Corolle enhances urban biodiversity. The verdant canopy acts as a natural air filter, removing pollutants and attracting pollinators, creating visually stunning and refreshing spaces for city dwellers.

Discover how Corolle can transform your urban spaces by contacting Brad Teter, our San Diego Territory Manager at [bradford.teter@maglin.com](mailto:bradford.teter@maglin.com).



Scan here to learn more about  
**COROLLE** and download an exclusive  
digital information package.

800.716.5506 | [www.maglin.com](http://www.maglin.com)







ABOUT THE AUTHOR  
**Gwen Stark, ASLA**  
EMERGING PROFESSIONALS  
CO-CHAIR

## HELLO EMERGING PROFESSIONALS!

Thanks to everyone who has participated in our ongoing LARE study groups! We have had a lot of members who have passed the exams and some who have even completed their license! After a break following the April round of tests, we restarted our study groups again in May and currently have groups for both the 'Inventory, Analysis & Project Management' and 'Construction Documentation & Administration' tests. These study groups are a great way to make a network of peers also working on their licensure. The exams can feel very intimidating to get started on but having a community to share useful study resources and methods makes it feel a bit easier! Our meetings occur twice a week on Wednesday or Thursday evenings virtually and Sunday mornings in person.

We are also looking forward to a site visit likely to Sweetwater Park, which is currently under construction, to learn more about how our designs actually come to life!

Sweetwater Park is a large park located on the San Diego Bay in Chula Vista featuring lots of native planting and walking trails as well as playgrounds and other custom structures. Participants will first be able to review the project drawings from the Schematic phase through Construction Documents and will then visit the site to see how those drawings transfer into construction, and hear about what went well and what issues to look out for. This event will occur in late summer so keep an eye out for that invite in the next month or so.

Later in the year, we are also planning a social event for our members to get to know more of the Emerging Professionals in the San Diego Community. More details to come! We are excited to meet everyone in person again and we hope many of you can join.

Interested in participating in the study groups (for any section) or have any questions:

[CONTACT GWEN](#)

[CONTACT FERNANDA](#)



# MARTIN ARMSTRONG APPOINTED TO CALIFORNIA LANDSCAPE ARCHITECTS TECHNICAL COMMITTEE

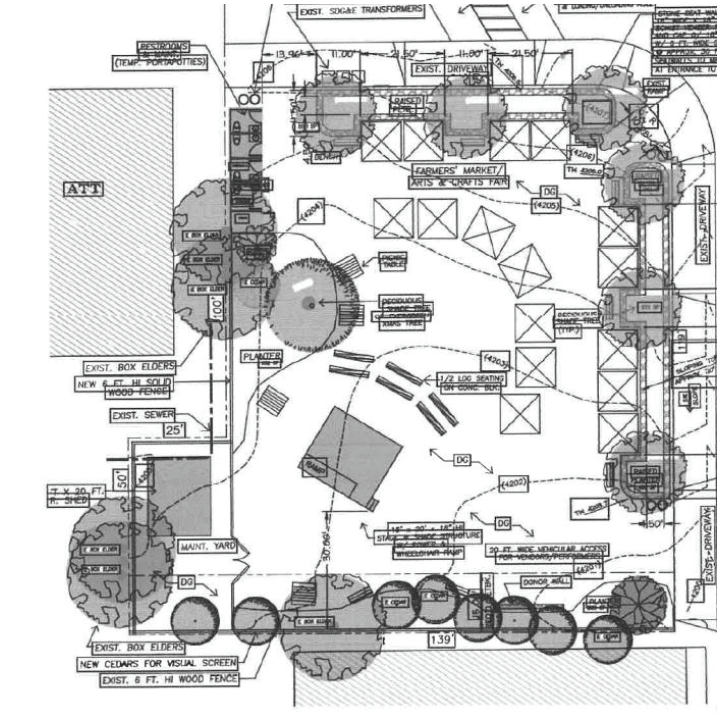
**Martin Armstrong has been appointed to the California Landscape Architects Technical Committee by Gov. Gavin Newsom.**

Armstrong has been owner and studio director of landARCH six-19 since 2023. He was senior associate at GroundLevel Landscape Architecture from 2022 to 2023. Armstrong was senior project manager, Regional Landscape Architecture and Urban Design Team Leader of Mark Thomas Co. from 2020 to 2022 and practice builder and landscape architect at Kimley-Horn Associates from 2018 to 2020.



Armstrong is a member of the American Society of Landscape Architects. He earned a Bachelor of Arts degree in Landscape Architecture from California Polytechnic State University, San Luis Obispo. This position does not require Senate confirmation and the compensation is \$100 per diem. Armstrong is a Democrat.

# COMMUNITY GRANT UPDATE



I'm writing to thank SD ASLA again for the generous grant you awarded Julian Community Heritage Foundation (JCHF)! We would also like to give you an update on our progress with the Julian Town Square Project.

After many meetings and visits to the SD County Planning Department, we have now secured our building permits and will be moving forward with Phase 1 of development. We have added beautiful cedar benches, handmade by a local artist.

We will keep you posted!

**Jean Duffy, JCHF Board President**

# CCASLA UPDATE



ABOUT THE AUTHOR

**Phil Armstrong, ASLA**

CCASLA PRESIDENT

I am certain that many of us anxiously await the coming days of sunny mornings while we bear the last gray and gloom of May and June. I have a great deal to report on legislative news from Sacramento.

Earlier this year your CCASLA Board of Directors from all four state chapters were anticipating an easy legislative walk with the quinquennial licensure sunset review. Every cycle, the state Assembly and Senate Business, Professional and Economic Development Committees review the licensure of landscape architects and other license boards. There has been a policy move afoot for some time at the Department of Consumer Affairs to consolidate many boards and commissions as a cost savings and efficiency move. This policy push has now made its influence to the California Architects Board (CAB) which is the overseer of our licensure body LATC. At first blush CCASLA realized that a possible dissolution of the LATC was under consideration.



Moreover, CAB was establishing a position and legislative testimony that the move should be coupled with the 2024 sunset review legislation. We suddenly viewed our license, and our professional voice were on a fast-track to being diminished and diluted. Without supporting data, and a real study of how a consolidated board would be operated and governed, any move toward consolidation would be premature. CAB and LATC consolidation should not be included in the 2024 sunset review bill. CCASLA wants a clean sunset review bill.

In Sacramento, we would have been handicapped to advocate for ourselves without a strong voice. With unanimous consent the CCASLA board voted to reinstate the licensure defense fund assessment fee. This fund supports the increase in fees for additional resources from our long-time lobbyist Edelstein Gibson Robson and Smith (EGRS).

With those additional resources, we have been able to speak to legislators and staff on the ground. We are vigorously advocating to maintain the status quo. CCASLA endorses the position that further review should be done between CAB and LATC committee boards and stakeholder groups. This will facilitate a thoughtful examination of how a blended professional board of this type will operate and function. We believe our work is making an impact in identifying our constituency of landscape architects in order to separate sunset review from any board consolidation effort.

There's an old saying, as California goes, so goes the nation. Given that landscape architects pay some of the highest professional licensing fees in the state to support LATC's operations, we do not take potential inefficiencies lightly. However, we believe that consumer protection and professional competency must come first. Therefore, CCASLA believes it is essential that we understand the significant changes before deciding whether it is worth it to fundamentally alter how our profession is regulated.

CCASLA remains pragmatic however, and consolidation of professional boards may seem inevitable. The national mixture of combined professional boards for landscape architect's is about 50/50. With most 'Blue States' having stand-alone independent boards. It is unequivocally important that professional licensure remain the crucial bedrock of what sets landscape architects apart from every other AEC professional. We are not aware of any evidence suggesting that multidisciplinary boards in other states offer more consumer protection than others with stand-alone boards. We urge caution when it comes to altering the regulation of landscape architects in California. CCASLA is advocating on behalf of not only our membership but every other PLA with a license in our state. Membership helps support advocacy. Encourage your colleagues who are not members to join ASLA.

We all need a strong voice. Please contact the committee consultants of the Senate and Assembly Business and Professions Committees at the following links and urge them to oppose any consolidation of the CAB and LATC. Ask them to maintain the LATC as is and to approve a final sunset license review bill in the state Assembly without diminishing the LATC.

**Senator Angelique Ashbey - Consultant**

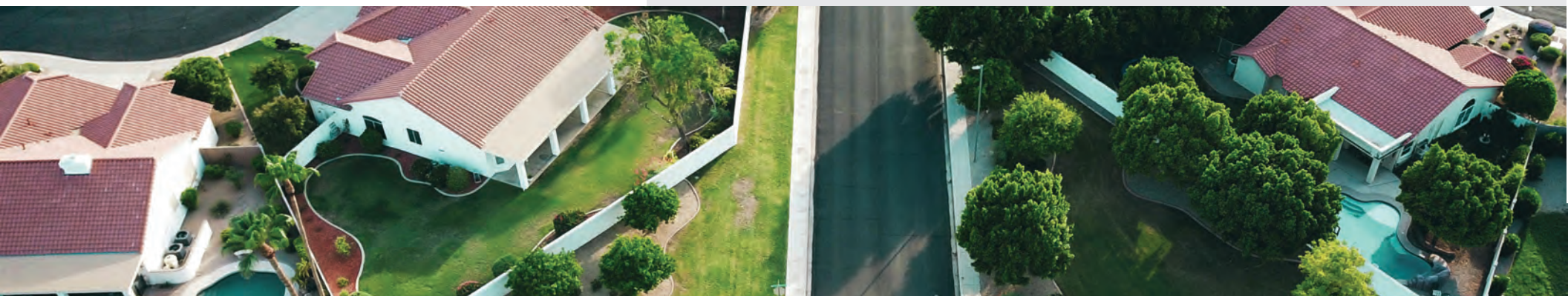
<https://lcmspubcontact.lc.ca.gov/PublicLCMS/ContactPopup.php?district=SD08&inframe=N>

**Assemblyman Marc Berman**

<https://lcmspubcontact.lc.ca.gov/PublicLCMS/ContactPopup.php?district=AD23&inframe=N>

Current bills that CCASLA is tracking are included below. Most of the legislation being tracked is now in review by the opposite legislative body the bill originated in. Most are in committee considering amendments.

BILL#	SUBJECT	POSITION	STATUS
<b>AB 996</b> (Low)	DCA: Continuing Education: Conflict of Interest Policy	Watch	Sen Inactive
<b>AB 1573</b> (Friedman)	Prohibit Potable Water Use on Nonfunctional Turf	ReqAmend	Sen Inactive
<b>AB 1862</b> (Fong)	Engineering, land surveying, architecture: LLCs	Watch	Sen Approp 8/5/24
<b>AB 1912</b> (Pacheco)	Electricity: Mandated Programs	Watch	Sen Approp 8/5/24
<b>AB 2285</b> (Rendon)	Equitable outdoor access: 30x30 goal	Watch	Senate Suspense
<b>AB 2440</b> (Reyes)	30x30 goal: Partnering State Agencies: Parks and Rec	Watch	Senate Suspense
<b>AB 2600</b> (Calderon)	Urban Forestry: School Greening	Watch	Dead
<b>SB 802</b> (Roth)	Licensing Boards: Disqualification: Criminal Conviction	Watch	Asm Desk
<b>SB 1048</b> (Jones)	Planning Zoning: Site Plans	Watch	Chaptered 29
<b>SB 1091</b> (Menjivar)	School Facilities Greening	Support	Asm Approp
<b>SB 1452</b> (Ashby)	Sunset Extension	Support	Asm Approp







since 1979

# dave bang

associates inc.

► park+playground outfitters

► park+playground outfitters



reproHAUS

COMPUTER

INNOVATION

TECH SERVICES

GRAND FORMAT

SIGNAGE

3D PRINTING

TECH SERVICES

MANAGED PRINT

IT SERVICES

ORDER ONLINE: WWW.REPROHAUS.NET

## Designing For Impact ◀

Creating a truly impactful park + playground starts with understanding of your community's needs.

Then, we pull back the layers of objectives, fire up our creative engine and discover how to make what you've been imagining - a reality.

Remember, this project will be influencing lives for 20+ years so we want to get the design right!



**Community**



**Connection**



**Adventure**



VISIT US ONLINE

1.800.669.2585  
DAVEBANG.COM



# TRUSTEE UPDATE



ABOUT THE AUTHOR  
**Patricia Trauth, ASLA**  
CHAPTER TRUSTEE

TRUSTEE

The Trustees are having a series of Town Hall meetings this summer with Torey Carter-Conneen, ASLA's CEO. He was sharing the content of some workshops that were conducted in the state of Texas to discuss the future of our profession. Participants included developers, public sector clients and private practitioners. The discussion addressed the perception of the profession, lessons learned from practicing, climate change and opportunity, political influence and its influence on development, shifting needs of the public sector, and critical issues for the profession.

Much of what I heard was not new, but it is good to know that many issues affect our entire profession, regardless of where you practice. Some of the feedback that was given to landscape practitioners included:

- » Lead and manage more green infrastructure projects, which tend to have civil engineers taking the lead. As a minimum, the landscape architect needs to be involved in the project early.
- » Understand zoning and development codes better. According to this discussion, landscape architects are perceived as weak in this area.

- » Explain and promote the economic benefits of green infrastructure. Green infrastructure can be a centerpiece of smart regional planning, ensuring communities have a livable environment, with clean air and water, for generations to come.
- » Describe how our profession benefits the developer. We could all benefit from a succinct answer to this!
- » Determine when and how the term Climate Action is used. For many in the development industry, the term Climate Action may have a negative impact on clients, when it is a solution to the climate crisis.

Perhaps our chapter should have a similar workshop and hear what our clients have to say about our profession, sustainable design and the economic benefits of landscape architecture.

This is one of many programs ASLA National is promoting to get the word out about our profession! I would love to hear your thoughts on all things related to landscape architecture.

**CONTACT PATRICIA**



# SAN DIEGO URBAN TIMBER



## HELLO, WE ARE YOUR LOCAL WOOD HUB HERE IN SAN DIEGO!

WE ARE A MILL, BUILD, & DESIGN COMPANY THAT RECLAIM SD TREES SLATED FOR THE LANDFILL AND PROCESS THEM TO CREATE FINE FURNITURE, ART, AND MATERIALS FOR OTHER WOODWORKERS. WE HAVE BEEN PROUDLY DOING THIS FOR OVER 16 YEARS AND AT THE END OF LAST YEAR BECAME A NON-PROFIT!

DUE TO CIRCUMSTANCES BEYOND OUR CONTROL WE WILL BE MOVING OUT OF OUR CHULA VISTA LOCATION AND ARE LOOKING FOR STRATEGIC PARTNERS IN RELATION TO URBAN WOOD UTILIZATION. THE CITY GAVE NOTICE THAT OUR LOCATION IS TO BECOME A POLICE IMPOUND YARD AND WE MUST BE OUT BY SEPTEMBER 1ST 2024.

610 BAY BLVD IS NOW OUR STORAGE SURPLUS LOCATION AND WE SIMPLY CANNOT MOVE WITH ALL THIS BEAUTIFUL MATERIAL. ALSO, WITH OUR NEW I-DRY VACUUM KILN WE WILL SURELY CREATE MORE MATERIAL AFTER THE MOVE.

AS WE LOOK FOR A NEW HOME AND/OR NEW PARTNERS WE ARE ABLE TO BLESS THE SD COMMUNITY WITH GREAT INVENTORY SALES:

**20% - 50% OFF ALL WOOD MATERIAL**

THIS MONTHS HOLIDAY SALE:

**APRIL 19TH + 20TH** - EARTH, ARBOR, DAN'S BIRTH-DAY

HUGE BLOW OUT SALE: **30% - 60% OFF ALL WOOD MATERIALS**

STAY TUNED FOR INFORMATION VIA OUR WEBSITE: [WWW.SANDIEGOURBANTIMBER.COM](http://WWW.SANDIEGOURBANTIMBER.COM)

IF YOU HAVE ANY QUESTIONS PLEASE CONTACT: [INFO@SDURBANTIMBER.COM](mailto:INFO@SDURBANTIMBER.COM)

NEW HOURS OF OPERATION: SATURDAYS 10:30AM-5PM



Owners: Jessica Van Arsdale & Daniel Herbst

# MEMBERSHIP UPDATE



ABOUT THE AUTHOR

**Tracy Hollingworth, CAE, MPA**

CHAPTER EXECUTIVE DIRECTOR

Happy Summer to all of our members. Thanks to renewing members and for your continued support of the ASLA San Diego chapter! Please feel free to reach out if you have any questions on your membership.

## MEMBERSHIP ANNIVERSARIES

Congratulations to the following members for reaching membership milestones (member anniversaries in July through September are for continuing membership).

## ● 1 - 5 YEARS

Brigitta Rehn, Affiliate ASLA  
Fernanda A. Suarez, ASLA  
Alexander G. Wade, ASLA  
Frank Franciosi, Affiliate ASLA  
Giulia Valentini  
Michael John V. Espiritu, ASLA  
Blake R. Osland, ASLA  
Elissa Urbina, Associate ASLA  
Devin Murphy, ASLA  
Cristhian Barajas, ASLA  
Adam Robert Crowell, Associate ASLA  
Todd N. Fry, ASLA  
Mario Ezequiel Magallanes, ASLA  
Ryan Wolford, Associate ASLA  
Trista Silvia, Affiliate ASLA  
Donna J. Tylor, ASLA  
Bret Belyea, ASLA  
Chad A. Evans, ASLA





## ● 6 - 10 YEARS

Patricia Ferman, ASLA  
Martin Armstrong, ASLA  
Matthew MacLeod, ASLA  
Patrick Baldwin, ASLA  
Josef Gutierrez, ASLA  
Brooke Whalen, ASLA

## ● 11 - 20 YEARS

Kristen C. Gros, ASLA  
Leigh Kyle, ASLA  
Howard L. Greenstein, ASLA  
Michael Vail, ASLA

## ● 21 - 30 YEARS

Robert J. Streza, ASLA  
Amy Chevalier, ASLA  
Keith A. Mitemeyer, ASLA  
Mark A. Caro, ASLA  
Robert V. Mekjian, ASLA

## ● 31 + YEARS

James D. Burnett, FASLA  
Kelly G. Broughton, FASLA  
Mark A. LaRue, ASLA  
Bruce Alan Rudd, ASLA  
Jon L. Powell, ASLA

MEMBERSHIP

# UPCOMING EVENTS & MEETINGS

## JULY

**17** EXECUTIVE COMMITTEE MEETING  
6PM | ONLINE

**20** HIKING TOUR WITH LAKESIDE'S  
RIVER PARK CONSERVANCY  
8AM – 10AM  
12108 INDUSTRY ROAD  
10354 CHANNEL ROAD TRAILHEAD  
LAKESIDE, CA 92040

INFO + REGISTRATION

**25** SOCAL SHADE SAILS SPRING MIXER  
6PM – 8PM  
2048 ALDERGROVE AVENUE, STE A  
ESCONDIDO, CA 92029

INFO + REGISTRATION

## AUGUST

**21** EXECUTIVE COMMITTEE MEETING  
6PM | BALBOA PARK

**25** EVERDE GROWERS PLANT  
DISCOVERY EVENT  
1130AM – 130PM  
5400 GOVERNOR DRIVE, SAN DIEGO

INFO + REGISTRATION

## SEPTEMBER

**21** EXECUTIVE COMMITTEE  
MEETING 930AM – 130PM  
LPA DESIGN STUDIOS  
2765 TRUXTUN RD  
SAN DIEGO, CA

## OCTOBER

**4-5** ASLA NATIONAL CHAPTER  
PRESIDENTS COUNCIL MEETINGS  
MARRIOTT MARQUIS  
WASHINGTON, DC

**6-9** ASLA NATIONAL CONFERENCE  
WASHINGTON, DC

**16** EXECUTIVE COMMITTEE MEETING  
6PM | ONLINE

**28** ASLASD GOLF TOURNAMENT  
1030AM – 8PM  
MADERAS GOLF CLUB

INFO + REGISTRATION

**CHECK OUT OUR WEBSITE** FOR ALL OUR CURRENT & UPCOMING EVENTS

ASLASD EVENTS





**SAVE THE DATE**  
**2024 PLANT DISCOVERY  
EVENT HOSTED BY EVERDE  
GROWERS!**

EVERDE GROWERS NURSERY TOUR AND  
NEW PLANT PRESENTATION

**WHEN:** Friday, August 23, 2024, 11:30 am – 1:30pm

**Location:** 5400 Governor Drive, San Diego CA

Join us this Summer for a nursery tour and new plants presentation for ASLA hosted by Everde Growers, led by Suzie Wiest, New Products & Marketing Representative.

We'll meet at the Landscape Center at the entrance of the Miramar farm and tour select areas. The tour will be followed by lunch with a presentation on cutting edge plants and will conclude with a plant raffle.

Attendance is limited to a group of 20. Be sure to RSVP in advance and wear suitable footwear.

**REGISTER TODAY!**

# SAN DIEGO CHAPTER 2024 EXECUTIVE COMMITTEE

## **PRESIDENT**

**Jacqueline Higgins, ASLA**  
Forever Balboa Park  
619.331.1920

## **PRESIDENT ELECT – FUNDRAISING**

**Kathryn Kanaan, ASLA**  
KDA Landscape Architects  
619.840.5174

## **SECRETARY**

**Alexander Wade, ASLA**  
Rick Engineering  
619.291.0707

## **PAST PRESIDENT**

**Martin Armstrong, ASLA**  
Armstrong Land Development  
619.283.8818

## **VP COMMUNITY OUTREACH**

**Difan Chen, ASLA**  
KTUA Landscape Architecture & Planning  
607.793.8866

## **VP PROGRAMS/EDUCATION**

**Kenya Huevo, ASLA**  
LPA  
619.795.2555

## **PROGRAMS/SOCIAL CHAIR**

**Elissa Urbina, ASLA**  
GroundLevel  
619.984.4840

## **VP VISIBILITY/PUBLIC AFFAIRS**

**Ruoxi (Cisy) Cao, Associate ASLA**  
IDS Group

## **CHAPTER TRUSTEE**

**Patricia Trauth, ASLA**  
Rick Engineering Co.  
619.278.5656

## **CALIFORNIA COUNCIL OF ASLA**

**Phil Armstrong, ASLA**  
The Lightfoot Planning Group  
760.692.1924

## **Marty Schmidt, ASLA**

Environs  
619.232.7007, ext. 101

## **EMERGING PROFESSIONAL CO-CHAIRS**

**Gwen Stark, ASLA**  
KTUA  
619.294.4477

## **Fernanda Suarez, ASLA**

MIG  
619.682.3841

## **CLIMATE ACTION COMMITTEE**

**Stephanie Green, ASLA**  
Landscape Architect  
619.630.8730

## **GOLF COMMITTEE CO-CHAIRS**

**Kathryn Kanaan, ASLA**  
KDA Landscape Architects  
619.840.5174

**Gregg Roesink**  
Hunter Industries  
760.703.2474

## **PUBLIC SPACES ADVOCACY COMMITTEE**

**Wei Wang, ASLA**  
Van Dyke Landscape Architecture  
858.504.0392

## **EXECUTIVE DIRECTOR**

**Tracy Morgan Hollingworth**  
1050 Rosecrans St., Ste. B  
San Diego, CA 92106  
619.283.8818

## **ASLASD NEWSLETTER DESIGNER**

**Kari Cureton**  
Sarit + State Creative Studio  
619.318.3454



## ASLA NATIONAL EXECUTIVE OFFICERS

### **PRESIDENT**

SuLin Kotowicz, FASLA

### **PRESIDENT ELECT**

Kona Gray, FASLA

### **IMMEDIATE PAST PRESIDENT**

Emily O'Mahoney, FASLA

### **CEO/EVP**

Tony Carter-Conneen,  
Affiliate ASLA

### **VP COMMUNICATIONS**

Monique Bassey, ASLA

### **VP EDUCATION**

Ebru Ozer, FASLA

### **VP PROFESSIONAL PRACTICE**

Jean Senechal Biggs, ASLA

### **VP FINANCE**

Chris Della Vedova, FASLA

### **VP GOVERNMENT AFFAIRS**

Joy Kuebler, FASLA

### **VP MEMBERSHIP**

April Westcott, FASLA

### **SECRETARY**

Curt Millay, ASLA

### **TREASURER**

Michael D. O'Brien, Hon. ASLA

### **PARLIAMENTARIAN**

Susan Jacobson, ASLA

## CALIFORNIA COUNCIL OF ASLA 2024 EXECUTIVE BOARD

### **SIERRA CHAPTER**

Andrew Wickham, ASLA (Gov't Affairs)  
916.287.2326

### **Dalton La Voie, ASLA**

916.669.5913

### **SOUTHERN CALIFORNIA CHAPTER**

#### **David Tatsumi**

949.453.9901

### **Stephanie Landregan, ASLA (Website)**

310.825.1735

### **SAN DIEGO CHAPTER**

#### **Phil Armstrong, ASLA (President)**

760.415.24.26

### **Marty Schmidt, ASLA (Vice President)**

619.275.3003

### **NORTHERN CALIFORNIA CHAPTER**

#### **Justin Richardson**

415.285.3614, x509

### **Brodie Hegg, ASLA (Treasurer)**

209.652.9399

### **LOBBYISTS**

#### **Jason Ikerd**

Edelstein Gilbert Robson & Smith, LLC  
916.443.6400

### **LATC LIAISON**

#### **Pamela Brief**

818.726.0456

### **LATC EO/PROGRAM MANAGER**

#### **Laura Zuniga**

916.575.7230

### **CCASLA EXECUTIVE DIRECTOR**

#### **Tracy Morgan Hollingworth**

619.283.8818

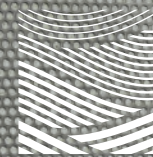
[cc-asla.org](https://cc-asla.org)

THANK YOU TO OUR **2024 SPONSORS**

**T.B. PENICK  
& SONS, INC.**



AGRI-SERVICE ► ANOVA ► BENCHMARK LANDSCAPE ► NATIVE WEST



Connect with Us



[asla-sandiego.org](http://asla-sandiego.org)

Mailing Address:  
1050 Rosecrans Street, Suite B  
San Diego, CA 92106

619.283.8818