

AS LA SD

DIGITAL NEWSLETTER

FALL 2023



2022 MERIT AWARD:
GARST LANE RESIDENCE
BY FIORE LANDSCAPE DESIGN



asla-sandiego.org

VISION

A world where the built and natural environments coexist in harmony and sustainable balance, where all peoples can express their diverse heritage and their individual desires to grow and thrive; and where we, as a profession, can substantially contribute to the process of achieving these ends.

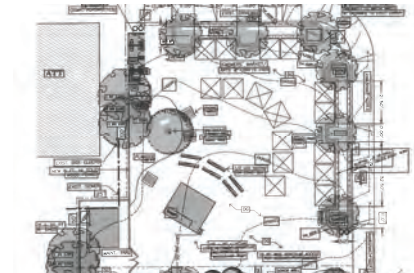
MISSION

To lead, to educate and to participate in the careful stewardship, wise planning and artful design of our cultural and natural environments.



4
**President's
Message**

MARTIN ARMSTRONG, ASLA



8
**Community Grant
Recipient Awarded!**

DIFAN CHEN, ASLA



16
**Boy Scouts
Earn Landscape
Architecture
Merit Badges**

PHIL ARMSTRONG, ASLA



22
**Civita Park Tour:
A Walk Through
Mission Valley
History**

GLEN SCHMIDT, FASLA

CCASLA UPDATE [10](#)
 CLIMATE ACTION COMMITTEE UPDATE [13](#)
 REPROHAUS SPOTLIGHT [19](#)
 MEMBERSHIP UPDATE [20](#)
 PROGRAMS & EDUCATION UPDATE [24](#)
 EMERGING PROFESSIONALS UPDATE [25](#)

ASLASD UPCOMING EVENTS [26](#)
 SAN DIEGO CHAPTER EXECUTIVE COMMITTEE [28](#)
 ASLA NATIONAL EXECUTIVE OFFICERS [29](#)
 CCASLA EXECUTIVE BOARD [29](#)
 SPONSORS [30](#)

PRESIDENT'S MESSAGE



ABOUT THE AUTHOR

MARTY ARMSTRONG, ASLA

CHAPTER PRESIDENT

ADIOS SUMMER!

Adios summer...hope it was all you anticipated and more. I'm sure not many had

their crystal ball showing an Eastern Pacific tropical storm hitting America's Finest City and all of SoCal. It was due to happen sooner than later. Another sign of the global environmental times we are experiencing, adding to the list of droughts/floods, earthquakes, wildfires our design community is seeing.

There is a definite up-tic in the increase in remediation projects with a big anticipation of the magnitude of mother nature's wrath on our communities nationally and globally. So, it leads into my topic of protecting our resources from everything and designing for truly resilient urban spaces. Protection of not only our built urbanized spaces but more so our natural environment.

I had the chance to take a couple of road trips this summer and one big noticeable impact on our roadways, erosion control and in most places, the lack of it and how devastating the adjacent road shoulders were destroyed by Hilary or runoff from this past last winter.

From the shoreline to the desert, Yosemite, Big Sur, Palm Springs, all experienced significant destruction and cleanup won't be completed until the next round of winter begins.

This isn't just a problem in the West, rising seas are devastating roadways throughout the eastern seaboard from Maine to Key West and throughout the Gulf.

Smart transportation design, innovative design will emerge (we have some smart engineers out there!!) but making their design appealing is a growing emergence in our profession and those roadways aesthetics projects are on the rise.

Heading back into the urban centers, we're seeing our public spaces take center stage. Projects along our waterways and shorelines are seeing changes as well: rising groundwater, erosion and water quality.

Designs addressing future environmental impacts, and getting creative on how we as the environmental stewards should be taking the helm on making sure urban projects like Midway, South Bay and Seaport Village account for what is to come!!

We all need to get to these places and once again smart, innovative transportation should get us there safely, no matter what mother nature is dishing out!

So, with that, let's continue to enjoy what our design community is creating, get involved in those projects and make your voice heard. Protect what we have and what will be built and be even smarter, yes smarter, on how we use it with appreciation.



THE SAN DIEGO CHAPTER OF ASLA
INVITES YOU TO JOIN US FOR OUR 2023

Holiday Gala

ANNUAL MEETING & VOLUNTEER
APPRECIATION EVENT

WEDNESDAY, DECEMBER 13, 2023

6:00P RECEPTION | 7:00P BUFFET DINNER | 8:00P PROGRAM

BALI HAI RESTAURANT

2230 SHELTER ISLAND DRIVE, SAN DIEGO 92106

REGISTER BY DECEMBER 8

@ bit.ly/aslasd2023holiday

2023 ANNUAL SPONSORS:

Confirm sponsor benefits at www.asla-sandiego.org/sponsors
& email ASLASD@sbcglobal.net for your complimentary tickets



REGISTRATION + SPONSORSHIP OPPORTUNITIES

BRINGING YOUR DESIGN INTENT TO REALITY SINCE 1905.



Old Town San Diego State Historic Park (San Diego, CA) (Lithomosaics), Legoland Lego Movie World (Carlsbad, CA) (Imprinted Concrete & TBP Coloration System), San Diego Children's Zoo - Wildlife Explores Basecamp (San Diego, CA) (TBP Coloration System), 3rd Street Improvements (Phase 2) (Las Vegas, NV) (Lithocrete), San Diego Symphony - The Rady Shell at Jacobs Park (San Diego, CA) (Quarried Stone & Honed Concrete), Sunnyvale Sedimentary Wall (Sunnyvale, CA) (Lithocrete Sedimentary Walls)

For more than a century T.B. Penick & Sons, Inc. has been providing owners, architects, contractors, and specifiers like you, with the most advanced technologies in concrete materials and finishes. We enthusiastically support your vision, bringing quality, craft, and long-term value to those projects you wish to create. We look forward to working with you, ensuring that your design intent is accurately realized each and every step of the way.



858-558-1800 | www.TBPenickICS.com

LITHOCRETE® TERRAZZO SITE CONCRETE
NEWSLETTER | FALL 2023

**T.B. PENICK
& SONS, INC.**

2023-2024 BOARD OF DIRECTORS & COMMITTEE CHAIRS

Congratulations to the incoming Board of Directors for 2023-2024 including President Jacqueline Higgins, President-Elect Kathryn Kanaan, Past President Marty Armstrong, CCASLA President Phil Armstrong, VP of Communications Cisy Cao, VP of Community Outreach Difan Chen, Climate Action Committee Chair Stephanie Green, Executive Director Tracy Morgan Hollingworth, VP of Programs and Education Kenya Huezo, Golf Committee Co-Chair Chris Roesink, CCASLA Vice President Marty Schmidt, Emerging Professionals Committee Co-Chairs Gwen Stark and Fernanda Suarez, ASLA National Trustee Patricia Trauth, VP of Social Events Elissa Urbina, Secretary Alexander Wade and Chair of the Committee on Urban Social Spaces Wei Wang.

We are lucky to have such a talented Board this year and are looking to fill two Board positions for VP of Membership and Board Treasurer. If you have an interest in serving in one of these positions and/or a Committee, contact us at ASLASD@sbcglobal.net.



RECIPIENT OF ASLA SD'S 2024 COMMUNITY GRANT



ABOUT THE AUTHOR

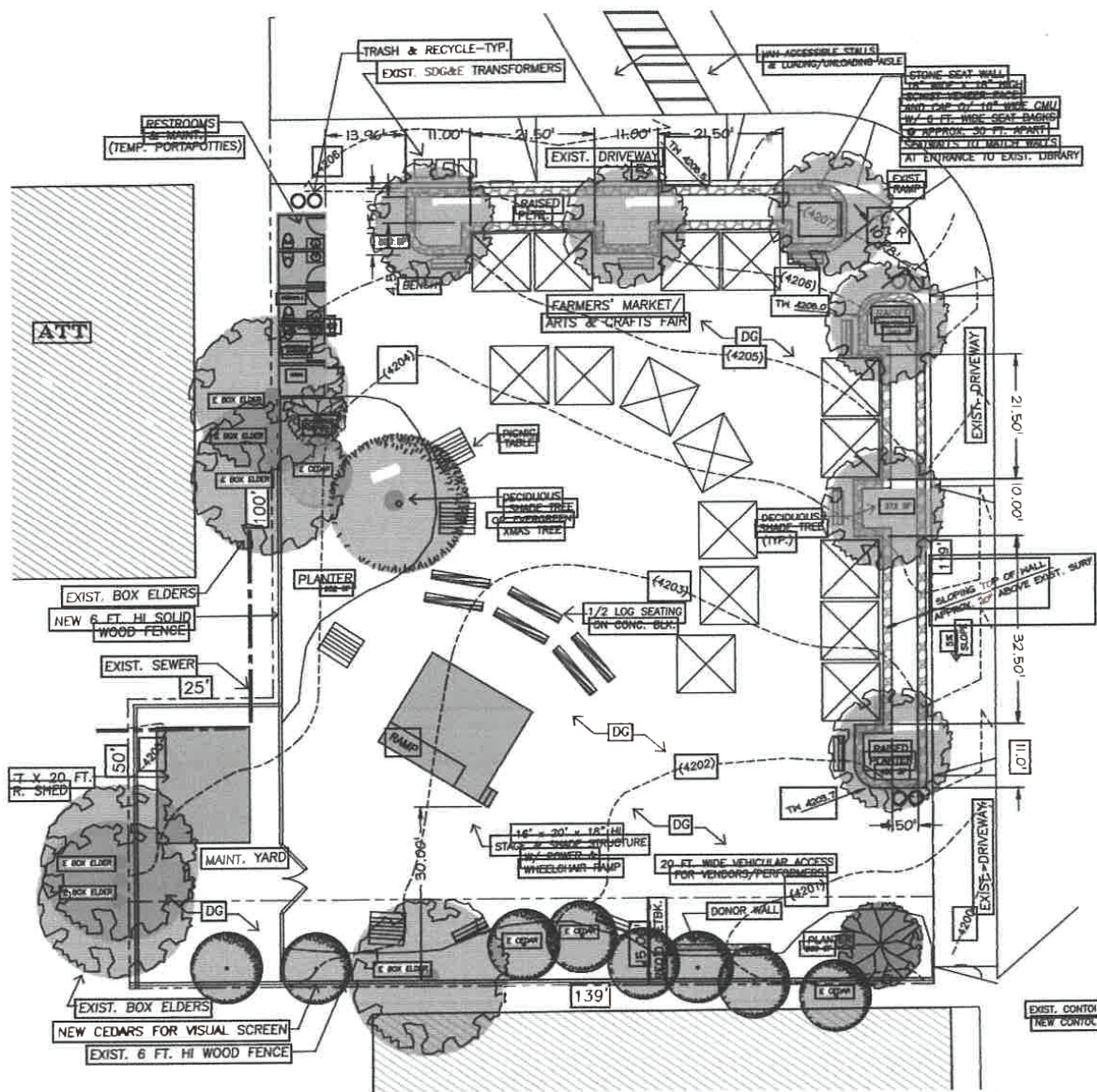
DIFAN CHEN, ASLA

VP COMMUNITY OUTREACH

In order for the profession of landscape architecture to make its full contribution to the San Diego region, the American Society of Landscape Architects - San Diego Chapter cordially invited all non-profit community groups in San Diego region to apply for the 2024 "ASLA San Diego Community Grant". The grant application is available on June 1, 2023 and ended on August 17, 2023. This \$5,000 grant is intended to educate and enhance community awareness of the profession of landscape architecture as well as to provide a benefit to the local community and/or environment. On the meeting on September 6, 2023, board members have discussed and approved the 2024 community grant recipient. **This year the grant will go to Julian Community Heritage Foundation with the project Julian Town Center.**

The Julian Town Square is located at the corner of Highway 78/79 and Washington Street in Julian, California, which sits at the main intersection in the heart of downtown Julian. The site was a brown field after decades of remediation following benzene contamination from a gas station that had been located at this location. For decades it was filled with weeds and only had a dilapidated fence keeping people out. The development of the Julian Town Square will provide a safe outdoor gathering space, which will be a natural multi-use recreational park for thousands of people including both local and visiting tourists.

The development of the Town Square will be done in three phases, and the grant will be used as part of Phase 1 development. Phase 1 development consists of rough grading & trenching, electrical and irrigation systems, decomposed granite walking surfaces, stone veneer raised planters, landscape plant materials, storage shed, benches & picnic tables, trash receptacles, and a donor recognition wall. The grant will pay for a significant portion of labor and materials for the raised planters of this phase. The board members are glad to see the whole project which demonstrates the importance of landscape architectural principles and practices in helping to conserve and enhance the natural and built landscape, promote sustainable design and preserve the cultural heritage of San Diego County. It also strongly shows the support and involvement of local citizens and groups and provides some benefit to the environment and community.



CALL FOR ENTRIES
 ASLA-San Diego 2024 Excellence in Design Awards

2024 DESIGN AWARDS COMMITTEE NEEDS YOU!

The 2024 Design Awards Committee is forming to hold another spectacular event next year and is looking for energetic members and affiliates who would like to assist with the receipt and confirmation of entries, the Jury selection and judging process and the selection of an event venue and MC for the summer Design Awards presentations.

If you are ready to roll up your sleeves to help Design Awards Chairman Marty Armstrong, contact us at ASLASD@sbcglobal.net to join the Committee.

CCASLA LEGISLATIVE UPDATE



ABOUT THE AUTHOR

Tracy Morgan Hollingworth, CAE, MPA

CHAPTER + CCASLA EXECUTIVE DIRECTOR



CCASLA

Summer has now come and gone and so has the California Legislature that just completed the first year of its two-year bi-annual session and is now in interim recess until January 3, 2024, when it reconvenes. CCASLA actively monitored 27 bills during 2023. Five had a support position (AB342, AB527, and AB883 SB416 and SB706); while one bill AB 1573 had an “oppose unless amended” position; with the remaining 21 bills being “watched”.

Of the five supported bills two (AB883 and SB416) have passed the legislature and been signed into law, while another two (AB342 and SB706 are on the Governor’s desk awaiting signature, but it is unknown whether he will sign or veto them at this time. One bill (AB 527) is in the Senate Appropriations Committee awaiting a vote later in 2024 so it is still alive. Two of the bills on our watch list (AB1041, and AB1694) are two-year bills that are on life support as they must pass their house of origin by January 31, 2024, when the legislature returns.

Of particular interest is AB1573 (Friedman) Water conservation: landscape design model ordinance. In which CCASLA has taken an “Oppose Unless Amended” position. This bill is currently on the State Senate’s Third Reading Inactive File so it’s still alive pending further amendments.

The bill will make changes to required provisions in the Model Water Efficiency Landscape Ordinance (MWELo), developed by the Department of Water Resources (DWR) and codified into law in the early 1990’s. This bill would mandate increasing the use California native plants to increase local biodiversity, and climate resiliency, prohibit overhead spray irrigation systems and prohibit the use of non-functional turf grass lawns in commercial and multi-family residential landscapes.

Specifically, the bill:

- 1) Deletes the requirement that MWELo shall not prohibit or require specific plant species.
- 2) Requires, instead, that MWELo include provisions that require plants included in a landscape design plan be selected based on their adaptability to climatic, geological, and topographic conditions of the project site, including, but not limited to: a) A scientific climate zone system that considers temperatures, humidity, elevation, terrain, and other factors affecting local climate; b) The horticultural attributes of plants, including mature plant size, invasive characteristics of plants, soil needs for healthy root growth, and other qualities and; c) California native plants found in the California Native Plant Society's Calscape database or comparable horticulture and science-based resources.
- 3) Requires MWELo to include provisions that: a) Prohibit the use of traditional overhead sprinklers on all new and rehabilitated landscapes and requires that new and rehabilitated landscapes use only water efficient irrigation devices, except as specified; b) Requires at the next update initiated after January 1, 2029, that all new or renovated nonresidential areas install in the project footprint not less than 10 percent California native plants, excluding edibles, functional turf, and areas using recycled water. AB 1573 Page 3 i) Defines "California native plant" as a plant indigenous to the State of California that has evolved and occurs naturally in California and has not been hybridized with plants not native to California, and a plant that is nonnative and noninvasive, that

provides pollinator benefits, and that is a low-water use plant, as determined by DWR and the Natural Resources Agency and; c) Prohibit, at the next update initiated after January 1, 2024, the inclusion of nonfunctional turf in nonresidential landscape projects.

- 4) Exempts the following from MWELo: a) Landscaping that is part of a culturally specific project; b) Ecological restoration projects that do not require a permanent irrigation system; c) Mined-land reclamation projects that do not require a permanent irrigation system and d) Existing plant collections, as part of botanical gardens and arboreturns open to the public.

CCASLA and other green industry stakeholders have been active in reaching out to this bill's author in proposing amendments and changes to this bill. Due to the potential extensive changes to MWELo that significantly affect our work, CCASLA will monitor this legislation carefully to see if it is amended sufficiently to move our position to "Support", as it could move quickly once the legislature reconvenes since its on the Senate Third Reading file and could move without warning for the Final Third Reading File.

CURRENTLY MONITORED BILLS

BILL#	SUBJECT	POSITION	STATUS
AB 45 (Boerner)	Coastal Developmt Permits:Blue Carbon Demo Projects	Watch	Sen Approp Com
AB 57 (Kalra)	Pocket Forest Initiative	Watch	To Governor
AB 334 (Rubio)	Public Contracts: Conflicts of Interest	Watch	To Governor
AB 342 (Valencia)	CA Architects Board: Licensee demographic Info	Support	To Governor
AB 363 (Bauer-Kahan)	Pesticides: Neonicotinoids: Eval for Non-Ag Use	Watch	To Governor
AB 400 (Rubio)	Local Agency Design Build Projects: Authorization	Watch	To Governor
AB 527 (Calderon)	Urban Forestry: School Greening Projects: Grants	Support	Sen Approp Com
AB 824 (Calderon)	Highway Greening: Statewide Strategic Plan	Watch	Sen Approp Com
AB 882 (Davies)	Coastal Resources: Climate Ready Program	Watch	Chaptered
AB 883 (Mathis)	Business Licenses: Dept of Defense SkillBridge Project	Support	Chaptered
AB 996 (Low)	DCA: Continuing Education: Conflict of Interest Policy	Watch	Sen Inactive
AB 1041 (Ramos)	Wildlife: White Sage: Taking and Possession	Watch	Asm 2Year Bill
AB 1572 (Friedman)	Prohibit Potable Water Use on Nonfunctional Turf	Watch	To Governor
AB 1573 (Friedman)	Landscape Design Model ordinance	Request Amend	Inactive File
AB 1694 (Bonta)	Regional Park/Open Space Districts: Mgmt Powers	Watch	Asm 2Year Bill
ACR 49 (Berman)	Annual California Native Plant Month in April	Watch	Chaptered
SB 337 (Min)	Environmental Protection: Biodiversity & Conserv	Watch	Chaptered
SB 372 (Menjivar)	DCA: Licensee&Registrant Records: Name/Gender Chg	Watch	To Governor
SB 414 (Allan)	Drought-Tolerant Landscaping:Local Incentive:AstroTurf	Watch	Asm Approp Com
SB 416 (Laird)	State Agencies:Building&Renovation Projects: LEED	Support	Chaptered
SB 499 (Menjivar)	School Facilities – School Extreme Heat Action Plan	Watch	Asm Approp Com
SB 539 (Stern)	Sepulveda Basin: Nature-Based Solutions/Planning	Watch	Chaptered
SB 617 (Newman)	Public Contracts: Progressive Local Design Build	Watch	Asm Approp Com
SB 676 (Allen)	Local ordinances®s: drought-tolerant landscaping	Watch	To Governor
SB 706 (Caballero)	Public Contracts: Progressive Design Build: Local	Support	To Governor
SB 802 (Roth)	Licensing Boards: Disqualification: Criminal Conviction	Watch	Asm 2Year Bill
SB 816 (Roth)	Professions and Vocations: LATC Fees	Watch	Chaptered



CLIMATE ACTION COMMITTEE UPDATE



ABOUT THE AUTHOR

Stephanie Green, ASLA

CLIMATE ACTION COMMITTEE CHAIR

The climate action movement in San Diego is gaining momentum. 17 out of 18 cities in the region already have or are in the process of developing climate action plans that work to reduce greenhouse gas emissions. A draft of the [County's CAP](#) should be released later this year. The actionable steps arising from these CAPs are being developed by agencies and community groups right now. As landscape architects, our role in shaping a more sustainable future for our beautiful region is more critical than ever, and there are many ways to get involved:

- 👉 **PARTICIPATE** in advisory boards, working groups, committees, and commissions that guide efforts in climate action plans, sustainability, climate equity, and urban forests. Landscape architects need to be where the rubber meets the road on interpretation of regional climate goals.
- 👉 **ENGAGE** with other disciplines and groups to raise awareness about the efforts of landscape architects in addressing climate change. Pat Caughey delivered a presentation titled "Smart Climate Solutions: Nature Based Solutions" at the San Diego AIA's a'23xSD Conference on September 28, focusing on the Navy Pier/ Freedom Park

Project. At the end of October, Alani Aguerre and Brianna Perkins of Schmidt Design Group will be presenting "Design Strategies to Mitigate Climate Change" at the [San Diego Green Building Council's 2023 Conference](#) on October 27.

👉 **STAY INFORMED** about the numerous organizations and initiatives focused on climate action in our region. Join the email list for programs you are passionate about to be altered when opportunities arise for your valuable input. The CAC is also dedicated to keeping you updated on the most recent news, events, opportunities, and resources. Please follow us on [LinkedIn](#) and

👉 **JOIN** our Climate Action Committee!

On the National Level

In September, the ASLA Climate Action Network (CAN) organized a quarterly meeting to provide updates on the activities of the national committee and share information about the developments at the Chapter CAC level. Out of the 71 action items in ASLA's Climate Action Plan, 14 were completed in the past year and 23 are currently in progress. The CAN is working on a dashboard to monitor the progress of these action items, and it may be launched as early as the National ASLA Convention at the end of October.

Need some help navigating ASLA's Climate Action Plan and Field Guide? The Washington State Chapter of ASLA has put together a [quick reference guide](#) to help out. Also, how is it going to implement these guidelines into your practice or projects? And, have you attempted to use the [Pathfinder Calculator](#) or [Carbon Conscience App](#) to help guide your projects to be more climate positive? We would like to hear feedback from our members to learn how we can help facilitate broader adoption.

What is the San Diego Chapter's Climate Action Committee up to?

With the welcome addition of two ASLA members to our ranks - Michael Tully and Ashlie Zinn, our group now rightfully earns the title of "committee." As a certified arborist with 15-years of experience in community forestry related initiatives, Michael brings to the CAC expertise that helps us tackle the health of our urban forest, education about best planting and care practices, and experiments with new methods, such as the Miyawaki afforestation method, which is a unique and efficient technique for creating dense, native, and biodiverse forests. Some of you may have heard Phil Armstrong present this concept at the RCP event in July regarding Assembly Bill 57 - the Pocket Forest Initiative. We aim to plant our inaugural forest this fall/winter and are actively looking for and securing partners who can contribute to land, materials, labor, and maintenance.

Our second new member, Ashlie, is a recent graduate of Cal Poly SLO. Ashlie is deeply passionate about supporting biodiversity and the creation of environments that enhance health and well-being. Her focus lies in expanding green networks enriched with a diverse array of plant species. Her dedication extends to the restoration of natural ecosystems and the preservation of habitat integrity.

Another project we are exploring is the alignment of our Chapter's Design Awards with ASLA's Climate Action Plan. This would likely weigh the CAP's initiatives and objectives into the existing awards framework, while also considering the establishment of a new award exclusively dedicated to recognizing outstanding achievements in climate action. In essence, we are dedicated to not only valuing excellence in landscape design but also to spotlighting and promoting climate-conscious efforts. This endeavor represents a crucial step forward in acknowledging the urgency of climate change and the imperative for sustainable design solutions.

If you have any interest in the efforts of our committee or have ideas on how we could be progressing climate action in the region, we encourage you to get in touch. Your ideas and perspectives are valued and welcomed. Additionally, if you are actively involved in climate action initiatives, we would appreciate hearing from you so that we can celebrate your contributions and offer our support. Contact me at StephGreenPLA@gmail.com

Thank you for your dedication to the profession and your commitment to creating a greener, more sustainable San Diego.

GRANT+ASSOCIATES + BEGA

ARCHITECTURAL SPECIALTY PRODUCTS



Join us at our Happy Hour with ASLA San Diego, showcasing **BEGA's** recently launched furniture line.

Atelier Manna

Thursday, November 2 4:30 - 6:30pm

Light appetizers and beverages will be served.

[Click Here To Reserve Your Spot Today!](#)

manna 

A Modern Day Atelier

1076 North Coast Highway 101 Encinitas, CA



BOY SCOUTS EARN LANDSCAPE ARCHITECTURE MERIT BADGES



ABOUT THE AUTHOR

Phil Armstrong, ASLA

CCASLA PRESIDENT

On Saturday August 5, The Boy Scouts of America descended upon Point Loma Nazarene University for the annual Merit Badge University, an all-day event where boys and girls from all over southern California have the opportunity to earn several Merit Badges towards their advancement in scouting.

The Landscape Architecture Merit Badge was offered as part of the over 40 badge curricula, and the response was subtly optimistic. Over 20 scouts pre-enrolled for the class with some added drop-ins attending. Maybe this indicates the public exposure the discipline receives might be increasing? Landscape Architecture merit badge is one of the more 'rare' badges in scouting. Ranking 128th out of some 138 scout merit badges available. Just above drafting and semaphore flag signaling, I think.

I would like to salute my great team of volunteers for helping out! We were able to introduce scouts to the basic principles of Landscape Architecture covering, garden history, the building and green profession, site layout, programming, plant materials, and connections between the built and natural environments.

Suzie Weist and Everde Growers generously donated the many 'dry-lush' low water use plantings Everde is known for. The scouts became familiar with 'backbone' shrubs of the industry. Our team showcased plants with colorful and or scented flowers and plant foliage. Of course, Bougainvillea, rosemary and lavender became plant favorites with the scouts. At the end of the two-class session scouts gathered for a raffle drawing to take home the plants and shrubs they learned. I hope they're all thriving!

My fellow partners in crime for the day were Chapter Past President Larry Sheehan, Patricia Vasquez, Michael Tully, Trista Silvia, and Andrew Hatch. My own journey in scouting culminated in becoming an Eagle Scout, it is frankly what led me to our profession of landscape architecture. Please look out for this event next year if you would like to help. Come on, let's raise the popularity of the Landscape Architecture merit badge!

If you are interested in assisting the Chapter with this program and others that help young people see a future in landscape architecture, go to this link (<https://www.asla-sandiego.org/asla-san-diego/>) and complete our volunteer form for one of our Chapter Committees or email us at ASLASD@sbcglobal.net and let us know how you would like to volunteer.





since 1979
dave bang 
 associates inc.
 ▶ park+playground outfitters



▶ park+playground outfitters

Designing For Impact ◀

Creating a truly impactful park + playground starts with understanding of your community's needs. Then, we pull back the layers of objectives, fire up our creative engine and discover how to make what you've been imagining - a reality.

Remember, this project will be influencing lives for 20+ years so we want to get the design right!



VISIT US ONLINE



Community
 +
Connection
 +
Adventure

1.800.669.2585
 DAVEBANG.COM

VOLUNTEER OPPORTUNITIES

Get involved!

Volunteer on one of our committees or as part of the board! Meet other landscape architects and become part of our local landscape architecture community.

VOLUNTEER FORM



leadership
 grows here.



The San Diego Chapter of ASLA appreciates the almost 19 years of support from ReproHAUS for its printing services that has allowed the Chapter to reach out to Annual Sponsors and promote and provide signage for our events including the Annual Golf Tournament.

ReproHAUS is a San Diego print shop that provides creative and stylized reprographic solutions for today's fast-paced business environment, while maintaining an industry-leading level of professionalism, quality, customer service, and green principles. Named one of the Top Shops by Wide-Format Imaging for five consecutive years, ReproHAUS is also a Top 20 Digital Print House that stops at nothing to guarantee client satisfaction.

Their printers offer a number of reprographic services, such as interior signage, banners, wayfinding, real estate, 3D printing, and more. Their San Diego print shop can handle any custom

print job, no matter how big or how small and their machines are capable of handling high-volume requests at lightning-fast speeds without harming the environment. At ReproHAUS they are reducing waste and improving the environment while creating beautifully printed products. Using non-toxic substances and recyclable materials, ReproHAUS is dedicated to cleaner printing for a better environment.

At <https://reprohaus.com/> you can view examples of past work they have done, get detailed information about their printing services, and contact their sales team. Their sales team can provide you with the most accurate and up-to-date information about what service is best for your specific needs.

From design and copywriting to print and delivery, ReproHAUS has comprehensive services set designed for your success. We hope you will make contact soon with Tito or Scott at ReproHAUS to begin your next project. Call ReproHAUS at 858-766-4287 (HAUS) today for personalized information on how the ReproHAUS San Diego print shop can help with your next printing job.

REPROHAUS WEBSITE

MEMBERSHIP UPDATE



ABOUT THE AUTHOR

Tracy Hollingworth, CAE, MPA

CHAPTER EXECUTIVE DIRECTOR

As we head into the end of the year, I'd like to solicit our members to recruit one of you to step into the VP of Membership position. It's a great opportunity to get to know the membership and to encourage local professionals to be an active part of their industry.

Thanks for your continued support of the ASLA San Diego chapter! Please feel free to reach out if you have any questions on your membership.

MEMBERSHIP ANNIVERSARIES

Congratulations to the following members for reaching membership milestones (member anniversaries in October through December are for continuing membership).

6 - 10 YEARS

2013 Katie Blair Hartman, ASLA; Ruoxi Cao, ASLA; Rocio Gertler, ASLA; Katerina Mattis, Affiliate ASLA; Kari J. Kikuta, ASLA

2014 Danielle Scardino, Affiliate ASLA; Kent J. Horner, ASLA

2015 Stephen Nunez, ASLA; Philip J. Armstrong, ASLA; Chad A. Evans, ASLA

2016 Camille L. Wildburger, ASLA

2017 Wei Wang, Associate ASLA

1 - 5 YEARS

2019 Karen Adams, ASLA; Maryam Abutabikh, Associate ASLA

2020 Angelica Diaz, Student ASLA; Jeanine Sharkey, Associate ASLA; Gwendolyn Stark, ASLA

2021 Fernanda A. Suarez, ASLA

2022 Kendal Heiskala, Student ASLA; Lucas Conlin, Student ASLA; Nico King, Student Affil ASLA; Alejandro Torres, Student Affil ASLA; Nilo Ondevilla, Student Affil ASLA

● 11 - 20 YEARS

- 2003** Timothy M. Henderson, ASLA; Glen F. Brouwer, ASLA; Jill Van Sickle, ASLA; Dillon Diers, ASLA
- 2006** Robert J. Jones, ASLA; Martin Armstrong, ASLA
- 2007** Jonathan S. Austin, ASLA; Jeff Justus, ASLA; Jacqueline Higgins, ASLA
- 2009** Laura K. Handschumacher, ASLA
- 2011** Patricia Ferman, ASLA; Hermilo M. Mejia, Student ASLA

● 21 - 30 YEARS

- 1994** Timothy F. Jachlewski, Jr., ASLA; Laura C. Burnett, FASLA
- 1995** Timothy M. Smith, ASLA; Caroline R. Lee, ASLA
- 1996** Cynthia S. Benoit, ASLA
- 1997** Stephanie Green, ASLA
- 2001** Brooke Whalen, ASLA; Michael P. Madsen, ASLA
- 2002** Thomas G. McDaniel, ASLA; Anne-Emilie Gold, ASLA

31 + YEARS ●

- 1971** Angelina Sotelo, ASLA
- 1983** Michael W. Peltz, ASLA; Glen Schmidt, FASLA; Kathleen A. Garcia, FASLA
- 1989** Steven Hutter, ASLA; Anthony D. Lawson, ASLA; Jon Samuel Wreschinsky, ASLA



CIVITA PARK

A WALK THROUGH MIS



ABOUT THE AUTHOR

Glen Schmidt, FASLA

SCHMIDT DESIGN GROUP

On September 14th representatives from Schmidt Design Group led a walking tour of Civita Park located in Mission Valley.

Jennifer Montgomery, Jesus Alan Figueroa, and Glen Schmidt led the tour sharing the history of the site and the parks and open space in the community.

Civita is a 230-acre master-planned community within a property that was utilized for a sand and gravel mining operation for over 100 years. It is one of the largest urban infill projects in the US. Once built out, the community will include over 4,700 residences along with close to 500,000 square feet of retail and over 400,000 square feet of office/business facilities.

MARKT OUR SION VALLEY HISTORY

The project is a result of a close partnership between the Grant Family, long term owners of the land, and Sudberry Properties who are leading the development of the community. The Schmidt Design Group team praised the Grant and Sudberry families for their commitment to excellence and the legacy they are leaving to all of San Diego with the public facilities provided within Civita.



Three out of four of the public parks designed for the community have been constructed including Franklin Ridge Mini Park, the central Civita Park, and the newly completed Creekside Park. The final park, Phylis Place Park, will be constructed after a future road connection to Serra Mesa is complete. In all cases, the owner's commitment to excellence and high standards were evident during the walking tour.

Civita Park has been recognized 9 times to date with two local Orchid Awards from the San Diego Architectural Foundation, two APWA San Diego Honor Awards, two California Park and Recreation awards, a Healthy Public Open Space award from ULI, recognition from the California Urban Forest Council, and honor and merit awards from ASLA San Diego.

RODERICK WYLLIE'S LECTURE "WET & DRY"



ABOUT THE AUTHOR

Kenya Huevo, ASLA

VP PROGRAMS/EDUCATION

The chapter hosted a Fall Lecture on Thursday, September 28 at the Coronado Club Room & Boathouse, with guest speaker Roderick Wyllie, FASLA, Founding Partner of SurfaceDesign, Inc. (SDI) and Professor in Practice at Harvard Graduate School of Design.

In his presentation, titled "Wet & Dry", Roderick shared select examples of current and past projects, describing a holistic and systems-based design approach that actively engages water extremes. Roderick detailed the creative approach by SDI on a variety of projects, including parks, corporate campuses, private residential gardens, and civic landscapes. Drawing inspiration from context, natural site processes, and artistic references, SDI develops engaging and inspiring landscapes that are rugged, contemporary, and crafted.

Roderick has led several complex projects with SDI including the Uber Campus in San Francisco, Bayfront Park, The Land's End Visitor Center, The Barnacles at Pier 9, and Expedia Global Headquarters in Seattle. Winner of multiple ASLA awards, SDI has recently been selected as a finalist for the Rosa Barba Award in 2023 and was named Best of the West by Architect's Newspaper in 2022. The firm's approach emphasizes and celebrates the unique context and imaginative potential of each project. The studio's design process is rooted in asking novel questions and listening to a site and its users.



We appreciate the support of our sponsors that helped make the ASLA San Diego Chapter lecture series possible this year: Kimley Horn, Spurlock Landscape Architects, KTUA, and Schmidt Design Group.



EMERGING PROFESSIONALS COMMITTEE UPDATE



ABOUT THE AUTHOR

Gwen Stark

EMERGING PROFESSIONALS CO-CHAIR

HELLO EMERGING PROFESSIONALS!

Thanks to everyone who has participated in our ongoing LARE study groups! We have had a lot of members who have passed the exams and are making great progress towards licensure. After a break following the August exams, we will be starting up the study groups again in the coming weeks for all exam sections. These study groups are a great way to make a network of peers also working on their licensure. The exams can feel very intimidating to get started on but having a community to share useful study resources and methods makes it feel a bit easier! Our meetings occur twice a week on Wednesday evenings virtually and Sunday mornings in person.

We are also happy to announce an upcoming 'Meet the Fellows' Event on the evening of November 30.

Fellowship is among the highest honors that ASLA confers on members to recognize significant contributions to the



profession of landscape architecture and society at large based on completed works, leadership, knowledge, and service.

At this event, our own FASLA Members within the San Diego Chapter will speak about the profession, their own career milestones and experiences, as well as answer questions and discuss topics that arise. This is a great opportunity to connect with the Fellows within our Chapter who have had a huge influence on our community and profession. We are excited to hold this event in person again and we hope many of you can join. Keep an eye out for the event flyer!

If you are interested in participating in the LARE study groups or have any questions regarding EPC, please contact Gwen Stark (gwen@ktua.com) or Fernanda Suarez (fsuarez@migcom.com).

UPCOMING EVENTS & MEETINGS

OCTOBER

4 EXECUTIVE COMMITTEE MEETING 6PM
ONLINE

16 ANNUAL GOLF TOURNAMENT |
10AM REGISTRATION/12 NOON START
MADERAS GOLF CLUB

REGISTER

25 ASLA NATIONAL WELCOME RECEPTION
HILTON MINNEAPOLIS HOTEL @6PM

26-27 ASLA NATIONAL CPC/TRUSTEE MEETINGS
730AM – 5PM, HILTON HOTEL

27-30 ASLA CONFERENCE ON LANDSCAPE
ARCHITECTURE – FIELD SESSIONS START
ON 10/26 CONFERENCE ENDS 10/30
BY NOON

NOVEMBER

2 GRANT & ASSOCIATES HAPPY HOUR
EVENT: ATELIER MANNA, ENCINITAS, CA

REGISTER

3 EXECUTIVE COMMITTEE MEETING &
RETREAT, RICK ENGINEERING, 9AM-1130AM
LUNCH 12PM – 130PM: SAMMY'S WOOD-
FIRED PIZZA MISSION VALLEY

RSVP

16 ASLA NATIONAL CHAPTER LEADERSHIP
RESOURCES 12PM – LINK WILL BE SENT
TO OFFICERS

30 MEET THE FELLOW EVENT
DETAILS ONLINE:
asla-sandiego.org/events

DECEMBER

6 EXECUTIVE COMMITTEE
MEETING 6PM
ONLINE

13 ANNUAL HOLIDAY PARTY
& MEMBER APPRECIATION
EVENT
BALI HAI RESTAURANT
530PM – 9PM

RSVP

CHECK OUT OUR WEBSITE FOR ALL OUR CURRENT & UPCOMING EVENTS

ASLASD EVENTS



High Quality



We are Southern California's resource for high quality outdoor products – representing the finest manufacturers in the outdoor recreation industry. Whether you are looking for outdoor shade systems, site furniture, playground equipment or surfacing, we are here to help. Discover and create the products you need to realize your vision. Contact us today for more information. **714.619.0100** or coastrecreation.com

reproHAUS

COMPUTER INNOVATION

TECH SERVICES

GRAND FORMAT SIGNAGE 3D PRINTING

BANNERS WINDOW GRAPHICS WAYFINDING CONSTRUCTION PROTOTYPING MODELING

BUILDING WRAPS WALL MURALS RETAIL 3D SIGNAGE CMYK FULL COLOR HIGH DEFINITION

FLOOR GRAPHICS TRADE SHOW ADVERTISING DECOR ENHANCED ACCURACY PHOTO REALISTIC

BILLBOARDS VEHICLE WRAPS COMMERCIAL REAL ESTATE ECO-FRIENDLY FAST TURNAROUND

MANAGED PRINT FACILITIES MANAGEMENT DOCUMENT MANAGEMENT IT SERVICES

ORDER ONLINE: WWW.REPROHAUS.NET



SAN DIEGO CHAPTER 2022/2023 EXECUTIVE COMMITTEE

PRESIDENT

Martin Armstrong, ASLA
Landscape Architect
805.794.5525

PRESIDENT ELECT – FUNDRAISING

Jacqueline Higgins, ASLA
Forever Balboa Park
619.218.4148

SECRETARY

Alexander Wade, ASLA
Rick Engineering
619.291.0707

PAST PRESIDENT

Patricia Ferman, ASLA
City of Chula Vista
619.954.5466

VP COMMUNITY OUTREACH

Difan Chen, ASLA
KTUA Landscape Architecture & Planning
607.793.8866

VP PROGRAMS/EDUCATION

Kenya Huevo, ASLA
MIG, Inc.
619.795.2555

PROGRAMS/SOCIAL CHAIR

Elissa Urbina, ASLA
GroundLevel
619.984.4840

VP VISIBILITY/PUBLIC AFFAIRS

Ruoxi (Cisy) Cao, Associate ASLA
KTUA
619.294.4477

CHAPTER TRUSTEE

Patricia Trauth, ASLA
Rick Engineering Co.
619.278.5656

CALIFORNIA COUNCIL OF ASLA

Martin Schmidt, ASLA
DeLorenzo International
858.430.6155

Phil Armstrong, ASLA

The Lightfoot Planning Group
760.692.1924

EMERGING PROFESSIONAL CO-CHAIRS

Gwen Stark, ASLA
KTUA
619.294.4477

Fernanda Suarez, ASLA

MIG
619.682.3841

CLIMATE ACTION COMMITTEE

Stephanie Green, ASLA
Landscape Architect
619.630.8730

GOLF COMMITTEE CO-CHAIRS

Jacqueline Higgins, ASLA
Forever Balboa Park
619.218.4148

Gregg Roesink

Hunter Industries
760.703.2474

PUBLIC SPACES ADVOCACY COMMITTEE

Wei Wang, ASLA

Van Dyke Landscape Architecture
858.504.0392

EXECUTIVE DIRECTOR

Tracy Morgan Hollingworth

1050 Rosecrans St., Ste. B
San Diego, CA 92106
619.283.8818

ASLASD NEWSLETTER DESIGNER

Kari Cureton

Sarit + State Creative Studio
619.318.3454

ASLA NATIONAL EXECUTIVE OFFICERS

PRESIDENT

Emily O'Mahoney, FASLA

PRESIDENT ELECT

SuLin Kotowicz, FASLA

IMMEDIATE PAST PRESIDENT

Eugenia Martin, FASLA

CEO/EVP

Tony Carter-Conneen,
Affiliate ASLA

VP COMMUNICATIONS

Monique Bassey, ASLA

VP EDUCATION

Ebru Ozer, FASLA

VP PROFESSIONAL PRACTICE

Adrian Smith, FASLA

VP FINANCE

Chris Della Vedova, FASLA

VP GOVERNMENT AFFAIRS

Joy Kuebler, FASLA

VP MEMBERSHIP

Brad McCauley, ASLA

SECRETARY

Curt Millay, ASLA

TREASURER

Michael D. O'Brien, Hon. ASLA

PARLIAMENTARIAN

Susan Jacobson, ASLA

CALIFORNIA COUNCIL OF ASLA 2022/2023 EXECUTIVE BOARD

SIERRA CHAPTER

Andrew Wickham, ASLA (Gov't Affairs)
916.287.2326

Dalton La Voie, ASLA

916.669.5913

SOUTHERN CALIFORNIA CHAPTER

Jim Pickel, ASLA (Secretary/Website)

714.930.6959

Stephanie Landregan, ASLA

310.825.1735

SAN DIEGO CHAPTER

Phil Armstrong, ASLA (President)

760.415.24.26

Marty Schmidt, ASLA (Vice President)

619.619.275.3003

NORTHERN CALIFORNIA CHAPTER

Ric Hendricks, ASLA (Treasurer)

805.441.7537

Brodie Hegg, ASLA

209.652.9399

LOBBYISTS

Jason Ikerd & Keely Morris
Edelstein Gilbert Robson & Smith, LLC
916.443.6400

LATC RESOURCE

Jon Wreschinsky, ASLA

619.916.6956

LATC PROGRAM MANAGER

Kim McDaniel

916.575.7230

CCASLA EXECUTIVE DIRECTOR

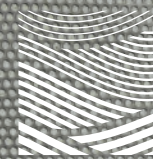
Tracy Morgan Hollingworth

619.283.8818

cc-asla.org

THANK YOU TO OUR 2023 SPONSORS

T.B. PENICK & SONS, INC.



Connect with Us



asla-sandiego.org

Mailing Address:
1050 Rosecrans Street, Suite B
San Diego, CA 92106

619.283.8818

BENCHMARK LANDSCAPE ▶ GRO-POWER INC. ▶ RCP BLOCK & BRICK
SOCAL SHADE SAILS ▶ SPRUCE AND GANDER ▶ THE LIGHTING ELEMENT ▶ TOURNESOL