

# AS LA SD

DIGITAL NEWSLETTER

SUMMER 2023



2022 HONOR AWARD: GARDEN OF THE ARTS  
BY CDLA



AS  
LA  
SD

[asla-sandiego.org](http://asla-sandiego.org)

## VISION

A world where the built and natural environments coexist in harmony and sustainable balance, where all peoples can express their diverse heritage and their individual desires to grow and thrive; and where we, as a profession, can substantially contribute to the process of achieving these ends.

## MISSION

To lead, to educate and to participate in the careful stewardship, wise planning and artful design of our cultural and natural environments.



## 4 President's Message

MARTIN ARMSTRONG, ASLA



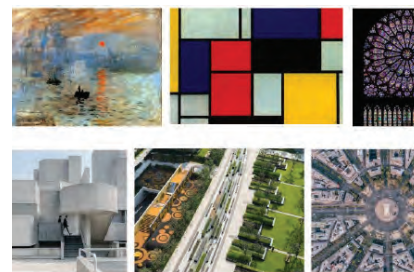
## 6 Community Grant Update

DIFAN CHEN, ASLA



## 9 Litane' Lecture "Schools that Heal"

KENYA HUEZO, ASLA



## 22 Parking Day 2023: Unleash Creativity

WEI WANG, ASLA

CCASLA UPDATE . . . . .	<a href="#">10</a>
CLIMATE ACTION COMMITTEE UPDATE . . . . .	<a href="#">12</a>
MEMBERSHIP UPDATE . . . . .	<a href="#">14</a>
EPC UPDATE . . . . .	<a href="#">18</a>
TRUSTEE UPDATE . . . . .	<a href="#">20</a>

ASLASD EVENTS . . . . .	<a href="#">25</a>
ASLA SAN DIEGO EXECUTIVE BOARD . . . . .	<a href="#">26</a>
ASLA NATIONAL & CCASLA BOARD . . . . .	<a href="#">27</a>
SPONSORS . . . . .	<a href="#">28</a>

# PRESIDENT'S MESSAGE



ABOUT THE AUTHOR  
**MARTY ARMSTRONG, ASLA**  
CHAPTER PRESIDENT

We're actually making the mid-year turn, the fair at Del Mar had ended, the sun has finally made an appearance and the San Diego roadways are swelling up with summer tourists just as fast as the mid-day temperatures... I hope you're finding the time to enjoy it. With the first half in the rear-view mirror and our eyes fixated on what's to come: an election, the Olympics and another El Nino?!...we take the time to reflect...I'll skip the rollercoaster economy...reflect on these three topics and what their impacts might show in any given crystal-ball.

The election...not the Nation's, but our own ASLA Chapter elections. Did you nominate a worthy candidate, or perhaps consider stepping up and getting involved? Let's hope the latter.. because we really need some bodies to keep this Board glued together and keep our members 'in the know' on National, Regional and local topics. With members such as DJ Taylor departing California (whom I should say will be truly missed by many) we're really seeing a bigger need for membership diversification to ensure our Chapter success continues. Reach out to [Tracy](#). It truly is one of the most effective methods of regional networking within the profession.

**“...WE'RE REALLY SEEING A BIGGER NEED FOR MEMBERSHIP DIVERSIFICATION TO ENSURE OUR CHAPTER SUCCESS CONTINUES.”**

The Olympics...yes the upcoming 2024 games are next summer in Paris, but I'm still amazed many do not realize the following 2028 Games will be hosted just up the road in the City of Angels, Los Angeles...LA28. Many regional firms have been working on plans for the new and enhanced venues and I'd love to hear your firm's story on what's to come. When the '84 Games came through LA, I remember the impacts and changes we felt here in San Diego with some of the events making their way into our "America's Finest" venues. Athletes from around the globe came here to train before and after the games. We saw some improvements in The Ranch (Rancho Santa Fe) for some equestrian events, up the road in Irvine for cycling and modern-day pentathlon events, and also all the way up into Ventura County, at Lake Casitas for some rowing events, we felt the impacts regionally, let's hear what you're Team is working on.



Finally, El Nino (Not the Fernando Tatis Jr version Padre fans!!)...I'm referring to our wonderful weather and the impacts we felt on last winter's "atmospheric river" and what's ahead and are we as The Environmental experts working on water solutions for storage, erosion, and public safety. There are trends (yes trends) to be a mindset of reaction, once things are in evacuation mode or 'storm-watch' instead of analysis and preventative measures. Has your team seen any projects with funding to solve these future issues and can you share what you have on the boards as truly innovative. Our Engineering friends tend to have solutions we see as too "LA Basin concrete" and we've all realized the naturalized-softening of our watersheds and waterways is our Olmstead way of trending water movement. Let's see what shape your prototypes have evolved into and hope we can have one built for the next El Nino deluge. Sharing is caring and our entire design-strong community can gain in seeing your soon-to-be-installed solutions.

Until the next newsletter, keep in mind, our chapter needs you just as much as our community needs us.

See you in the water and on the trails!!

The poster features a large white golf ball on a tee in the center, set against a blurred green background. In the top left is the ASLA Classic San Diego logo, which includes a golf ball icon and the text 'ASLA CLASSIC SAN DIEGO'. To the right of the logo, the text reads 'THE 43RD ANNUAL ASLA-SD GOLF TOURNAMENT' in large white letters, followed by 'MONDAY, OCTOBER 16, 2023' and 'MADERAS GOLF CLUB' in green. At the bottom right, it says 'ALL PROCEEDS BENEFIT THE ANNUAL ASLA-SD COMMUNITY GRANT PROGRAM'. A blue banner at the bottom contains the URL 'https://bit.ly/aslasd2023golf' in white.

THE 43RD ANNUAL  
**ASLA-SD GOLF TOURNAMENT**  
MONDAY, OCTOBER 16, 2023  
MADERAS GOLF CLUB

ALL PROCEEDS  
BENEFIT THE ANNUAL  
ASLA-SD COMMUNITY  
GRANT PROGRAM

<https://bit.ly/aslasd2023golf>

THANKS TO OUR TOURNAMENT TITLE SPONSORS:



# BRINGING YOUR DESIGN INTENT TO REALITY SINCE 1905.



*Old Town San Diego State Historic Park (San Diego, CA) (Lithomosaics), Legoland Lego Movie World (Carlsbad, CA) (Imprinted Concrete & TBP Coloration System), San Diego Children's Zoo - Wildlife Explores Basecamp (San Diego, CA) (TBP Coloration System), 3rd Street Improvements (Phase 2) (Las Vegas, NV) (Lithocrete), San Diego Symphony - The Rady Shell at Jacobs Park (San Diego, CA) (Quarried Stone & Honed Concrete), Sunnyvale Sedimentary Wall (Sunnyvale, CA) (Lithocrete Sedimentary Walls)*

For more than a century T.B. Penick & Sons, Inc. has been providing owners, architects, contractors, and specifiers like you, with the most advanced technologies in concrete materials and finishes. We enthusiastically support your vision, bringing quality, craft, and long-term value to those projects you wish to create. We look forward to working with you, ensuring that your design intent is accurately realized each and every step of the way.



858-558-1800 | [www.TBPenickICS.com](http://www.TBPenickICS.com)

LITHOCRETE® TERRAZZO SITE CONCRETE  
NEWSLETTER | **SUMMER 2023**

**T.B. PENICK  
& SONS, INC.**

# COMMUNITY GRANT UPDATE



ABOUT THE AUTHOR

**DIFAN CHEN, ASLA**

VP COMMUNITY OUTREACH

## Chapter Community Grant Application Available – Submission Deadline is August 17

The San Diego Chapter of the American Society of Landscape Architects (SDASLA) invites local non-profits to apply for 2024 Community Grant of up to \$5,000 to design or construct landscape architectural improvements in San Diego County. Over 20 past grants have funded community improvement workshops, project design and construction, purchase of landscape amenities, and re-design and improvement of older community projects.

For more details and application materials, please go to SDASLA's website [www.asla-sandiego.org/events](http://www.asla-sandiego.org/events) or by emailing the Chapter for more information ([ASLASD@sbcglobal.net](mailto:ASLASD@sbcglobal.net)) or for a copy of the grant application. The application deadline is August 17, 2023.

**APPLICATION FORM**





since 1979  
**dave bang**  
 associates inc.   
 ▶ park+playground outfitters



▶ park+playground outfitters

## Designing For Impact ◀

Creating a truly impactful park + playground starts with understanding of your community's needs.

Then, we pull back the layers of objectives, fire up our creative engine and discover how to make what you've been imagining - a reality.

Remember, this project will be influencing lives for 20+ years so we want to get the design right!



VISIT US ONLINE



**Community**



**Connection**



**Adventure**

**1.800.669.2585**  
**DAVBANG.COM**

DEPARTMENT OF CONSUMER AFFAIRS  
 CALIFORNIA ARCHITECTS BOARD  
 LANDSCAPE ARCHITECTS TECHNICAL COMMITTEE

# LICENSURE FOR SPOUSES-PARTNERS OF ACTIVE DUTY MILITARY

Effective July 1, 2023, the Landscape Architects Technical Committee and all other Department of Consumer Affairs licensing boards and bureaus are required to grant temporary licensure to the spouse or domestic partner of an active-duty military member stationed in California if the applicant is currently licensed and holds an active and unrestricted license in another state with the same scope of practice as the profession in California for which they would like to practice. This applicant population also receives expedited processing and initial application and license fee waivers. Applications for this temporary licensure are available through the board or bureau with jurisdiction over the type of license being sought.

**RESOURCES FOR MEMBERS OF USAF**





# LATANE' LECTURE "SCHOOLS THAT HEAL"



ABOUT THE AUTHOR

**Kenya Huezo, ASLA**

VP PROGRAMS/EDUCATION



**We enjoyed a successful Spring Lecture held on June 7, 2023 at the Museum of Contemporary Art San Diego in La Jolla.** Claire Latane', MLA, FALSA, SITES AP, Author, Associate Professor and Chair of Landscape Architecture at Cal Poly Pomona, presented themes from her book "Schools that Heal: Design with Mental Health in Mind."

Claire described prevalent mental health issues faced by students today and the proven benefits of access to nature in mental, emotional, and physical wellbeing. Three design principles that support students' mental health are: creating environments that nurture a sense of belonging, providing nature-full spaces, and inspiring awe, curiosity, and wonder. Claire presented case studies and described the benefits of improving public health, climate resilience, and equity by applying these principles to design approaches.

A very special thanks to the sponsors who helped make the lectures possible this year: Kimley Horn, Spurlock Landscape Architects, KTUA, and Schmidt Design Group. Stay tuned for details on upcoming events, including the Fall lecture!



# CCASLA LEGISLATIVE UPDATE



ABOUT THE AUTHOR  
**Phil Armstrong**  
CCASLA PRESIDENT



Happy summer members! As we emerge from the omnipresent gray skies of spring, I want to extend heartfelt thanks and admiration to my CCASLA colleague DJ Taylor. DJ's off to Coeur d'Alene, Idaho to continue his landscape practice and be a fly-fishing guide.

Okay, maybe the last part is an exaggeration. Anyway, I wanted to recognize DJ with one last hurrah for all his contributions to San Diego ASLA, and all the projects in San Diego he's touched. With DJ's departure from the CCASLA board, I have stepped into the President's roll and would like to welcome Marty Schmidt (Environs Land+Water), who has served in the past as a CCASLA director, to help fill the San Diego chapter vacancy.

The four California chapter members of the California Council of ASLA (CCASLA) have been actively monitoring legislation that would impact our profession this session. Of highlight is AB 1573(Friedman) - Water conservation and landscape design model ordinance – although the bill has laudable aspects to increase bio-diversity, this bill would impose mandates to provide a minimum 75% native plants on all commercial

landscape projects, forbid spray irrigation and all non-functional turf. CCASLA's position on this bill is currently 'opposed unless amended'.

Our board and member chapters have been in active dialogue with the bill's author to offer amendments for consideration that would promote more thoughtful, and data-driven policy recommendations. To date, CCASLA's recommendations are under consideration to affect the final round of amendments for the bill.

The CCASLA board and member chapters are continuing outreach efforts to meet with local, state and federal representatives to advocate on issues for all landscape architects in promoting the health, safety and well-being of the general public. CCASLA is working with our legislative advocates in Sacramento to assist in determining what position to take on Assembly Bills (AB) and Senate Bills (SB) that affect the profession of Landscape Architecture in California. Please reach out to me ([Phil@lightfootpg.com](mailto:Phil@lightfootpg.com)) or Marty Schmidt ([Marty@environs.us](mailto:Marty@environs.us)) if you have any questions or topical issues CCASLA should consider.

# CURRENTLY MONITORED BILLS

<b>BILL#</b>	<b>SUBJECT</b>	<b>POSITION</b>	<b>STATUS</b>
<b>AB 45 (Boerner)</b>	Coastal Developmt Permits:Blue Carbon Demo Projects	Watch	Sen NR&W 6/27
<b>AB 57 (Kalra)</b>	Pocket Forest Initiative	Watch	Sen NR&W 6/27
<b>AB 334 (Rubio)</b>	Public Contracts: Conflicts of Interest	Watch	Sen Judiciary
<b>AB 342 (Valencia)</b>	CA Architects Board: Licensee demographic Info	Support	Sen Approp 7/3
<b>AB 363 (Bauer-Kahan)</b>	Pesticides: Neonicotinoids: Eval for Non-Ag Use	Watch	Senate EQ
<b>AB 400 (Rubio)</b>	Local Agency Design Build Projects: Authorization	Watch	Sen Approp 7/3
<b>AB 411 (Bennett)</b>	Transportation: Trails	Watch	Asm WPW 4/18
<b>AB 527 (Calderon)</b>	Urban Forestry: School Greening Projects: Grants	Support	Sen NR&W 6/27
<b>AB 824 (Calderon)</b>	Highway Greening: Statewide Strategic Plan	Watch	Sen Trans 6/27
<b>AB 882 (Davies)</b>	Coastal Resources: Climate Ready Program	Watch	Sen NR&W 7/10
<b>AB 883 (Mathis)</b>	Business Licenses: Dept of Defense SkillBridge Project	Support	Sen M & VA
<b>AB 996 (Low)</b>	DCA: Continuing Education: Conflict of Interest Policy	Watch	Sen Approp 7/3
<b>AB 1041 (Ramos)</b>	Wildlife: White Sage: Taking and Possession	Watch	Asm WPW
<b>AB 1572 (Friedman)</b>	Prohibit Potable Water Use on Nonfunctional Turf	Watch	Sen NR&W 7/3
<b>AB 1573 (Friedman)</b>	Landscape Design Model ordinance	Oppose-UA	Sen NR&W 6/19
<b>AB 1694 (Bonta)</b>	Regional Park/Open Space Districts: Mgmt Powers	Watch	Asm Local Govt
<b>ACR 49 (Berman)</b>	Annual California Native Plant Month in April	Watch	Chaptered
<b>SB 337 (Min)</b>	Environmental Protection: Biodiversity & Conserv	Watch	Asm Approp
<b>SB 372 (Menjivar)</b>	DCA: Licensee&Registrant Records: Name/Gender Chg	Watch	Asm Judic 6/27
<b>SB 414 (Allan)</b>	Drought-Tolerant Landscaping:Local Incentive:AstroTurf	Watch	Asm Approp 6/20
<b>SB 416 (Laird)</b>	State Agencies:Building&Renovation Projects: LEED	Support	Asm Approp 6/21
<b>SB 527 (Menjivar)</b>	School Facilities – School Extreme Heat Action Plan	Watch	Assembly Ed
<b>SB 539 (Stern)</b>	Sepulveda Basin: Nature-Based Solutions/Planning	Watch	AsmNatRes 6/26
<b>SB 617 (Newman)</b>	Public Contracts: Progressive Local Design Build	Watch	Asm Approp 6/21
<b>SB 676 (Allen)</b>	Local ordinances&regs: drought-tolerant landscaping	Watch	Asm LGov 7/12
<b>SB 706 (Caballero)</b>	Public Contracts: Progressive Design Build: Local	Support	Asm Approp 6/21
<b>SB 802 (Roth)</b>	Licensing Boards: Disqualification: Criminal Conviction	Watch	Asm B&P 7/11



# CLIMATE ACTION COMMITTEE UPDATE

---



ABOUT THE AUTHOR

**Stephanie Green, ASLA**

CLIMATE ACTION COMMITTEE CHAIR

Landscape Architects have a unique opportunity and responsibility to lead the way in creating resilient and sustainable communities. ASLA's Climate Action Plan includes the formation of chapter-level Climate Action Committees to support the national committee's mission of promoting the role of landscape architects in addressing climate change at local and regional levels.

The San Diego Chapter Climate Action Committee is just getting started. We have initiated collaborations with regional partners to facilitate the exchange of information regarding climate impacts, solutions, events, projects, and collaborations. We have also been promoting various opportunities and events, such as the recent webinars hosted by ASLA California Sierra Chapter. These webinars covered ASLA's Climate Action Plan and Pathfinder, an online landscape carbon calculator. If you missed the webinars, you can find links to their recordings on the ASLA SD Climate Action Committee's LinkedIn page, where we regularly update the latest news and events.

Speaking of the Pathfinder calculator, one of the first benchmarks of ASLA's Climate Action Plan is for 50% of Landscape Architecture firms to participate in the Climate Positive Design Challenge with projects logged on Pathfinder by the end of 2023. It's an ambitious target, but Pathfinder is user-friendly and helps guide projects towards sequestering more carbon than they emit, particularly when utilized in the early stages of design.

Apart from your individual practice and projects, you have the opportunity to make a broader impact by becoming a member of the Climate Action Committee. The committee is actively seeking ASLA members who are deeply committed to fostering discussions and initiatives addressing the pressing concerns of climate change, such as carbon drawdown, extreme heat, biodiversity, climate equity, and green infrastructure.

## Why Join the Climate Action Committee?

**Driving Positive Change:** Join a passionate group of individuals who are committed to making a difference. This committee acts as a platform to channel our collective expertise and creativity towards addressing climate-related issues in our profession and the broader community.

**Influencing Policy and Practice:** Participate in shaping policies and guidelines that promote sustainable practices and resilient design strategies. Together, we can advocate for the integration of climate-friendly approaches into planning, design, and development processes, ensuring a greener future for our region.

**Knowledge Sharing and Networking:** Engage with a multidisciplinary network of local experts who are at the forefront of climate action. Engage in discussions, share best practices, and stay informed about the latest advancements in sustainable design.

**Professional Growth:** Contribute to projects and initiatives that enhance your skills and showcase your commitment to sustainable design.

**Making an Impact Locally and Globally:** Climate change knows no boundaries, and its impact is felt at both local and global levels. By joining the committee, you will contribute to creating a lasting impact within our local San Diego community while also being part of a larger movement towards global sustainability.

## How to Get Involved:

To join the Climate Action Committee, email [stephgreenpla@gmail.com](mailto:stephgreenpla@gmail.com) or fill out the [volunteer form](#) on the ASLA SD website. Your involvement can be as little or as extensive as your schedule allows, but every contribution matters.

**Together, let's lead the charge and build a future where landscape architects play a pivotal role in mitigating climate change!**

Related Links:

[ASLA Climate Action Plan \(CAP\) & Field Guide](#)

[Climate Positive-Climate Positive Design Challenge, Design Toolkit & Pathfinder Calculator](#)

[ASLA SD Climate Action Committee LinkedIn](#)

# MEMBERSHIP UPDATE



ABOUT THE AUTHOR

**Tracy Hollingworth, CAE, MPA**

CHAPTER EXECUTIVE DIRECTOR

Happy Summer to all of our members. Thanks for your continued support of the ASLA San Diego chapter! Please feel free to reach out if you have any questions on your membership.

Thanks to renewing members - Jim Benedetti, James Burnett, Keith Mitemeyer, Jim Neri and Brad Lenahan.

## MEMBERSHIP ANNIVERSARIES

Congratulations to the following members for reaching membership milestones (member anniversaries in July through September are for continuing membership).



## 6 - 10 YEARS

- 2009** Amelia Capron, ASLA
- 2012** Kaitlyn Porter, ASLA
- 2013** Andrew Hatch, ASLA
- 2014** John O'Malley, ASLA
- 2015** Patrick Baldwin, ASLA
- 2016** Camille L. Wildburger, ASLA
- 2017** Wei Wang, Associate ASLA

## 1 - 5 YEARS

- 2019** Ania Galka Armour, ASLA; Jiayao Tang, Associate ASLA; Bret Belyea, ASLA
- 2022** Adam Crowell, Associate ASLA



## ● 11 - 20 YEARS

- 2006** Kathleen Therese Brand, ASLA; Frederick Besancon, ASLA
- 2008** Matthew MacLeod, ASLA; Leigh Kyle, ASLA
- 2010** Josef Gutierrez, ASLA
- 2011** Kristen C. Gros, ASLA; Denise Armijo, Affiliate ASLA

## ● 21 - 30 YEARS

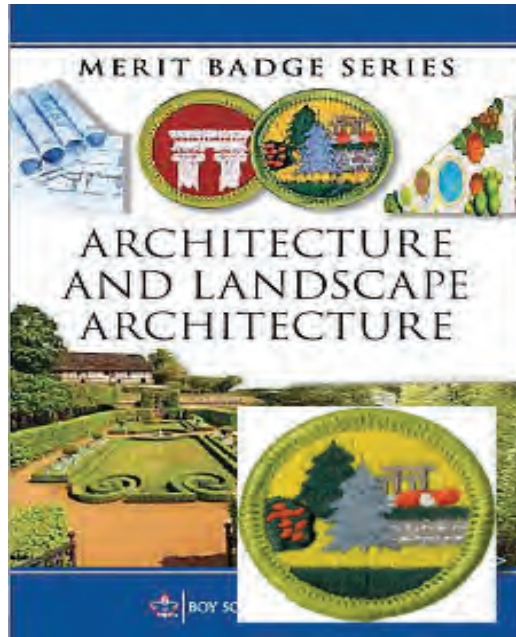
- 1995** Gail Zerbe, ASLA; Robert V. Mekjian, ASLA
- 1996** Mark A. Caro, ASLA
- 1997** Keith A. Mitemeyer, ASLA; Amy Chevalier, ASLA
- 1998** Robert J. Streza, ASLA
- 1999** Patricia M. Trauth, ASLA; Bradley C. Lenahan, ASLA
- 2000** James Neri, ASLA
- 2002** JT Barr, ASLA

## 31 + YEARS ●

- 1980** Don F. Ueno, ASLA
- 1984** Jon L. Powell, ASLA
- 1985** Michael H. Spohr, ASLA
- 1988** Bruce Alan Rudd, ASLA
- 1989** Mark A. LaRue, ASLA
- 1990** James Paul Benedetti, ASLA
- 1991** James D. Burnett, FASLA; Kelly G. Broughton, FASLA



# VOLUNTEERS NEEDED!



SAN DIEGO-IMPERIAL COUNCIL  
BOY SCOUTS OF AMERICA

## HELP TEACH LANDSCAPE ARCHITECTURE MERIT BADGE

San Diego Boy Scouts @ 'Merit Badge University'

Fun 'merit badge fair' event for Scouting - come share your passion for landscape architecture with the youth of Southern California.



Saturday  
August 5th

morning session  
8:00-12:00

-

afternoon session  
12:00-4:00

—————

Point Loma Nazarene  
University  
Greek Theater

—————

AM and PM shifts needed

—————

Hot Lunch Provided!

—————

Share your passion and  
give back

CONTACT:

Phil Armstrong, ASLA  
The Lightfoot Planning Group  
phil@lightfootpg.com  
760-692-1924





# THANKS TO RCP BLOCK AND BRICK FOR A GREAT EVENT AND PROGRAM!

RCP Block and Brick held an outstanding event at their Escondido location which featured updates from CLCA member Danny Smith from Park West and ASLA member and CCASLA President, Phil Armstrong who covered the latest legislation and new sustainable planting techniques.

Thanks to the RCP staff, especially Gina Adams for the coordination of the event and to those who attended and networked with contractors and landscape architects that evening.

# EMERGING PROFESSIONALS COMMITTEE UPDATE



ABOUT THE AUTHOR

**Fernanda Suarez**

EMERGING PROFESSIONALS CHAIR



[CLICK HERE IF INTERESTED IN JOINING A STUDY GROUP!](#)

## HELLO EMERGING PROFESSIONALS!

In preparation for the August exam dates, we have been running LARE exam study groups for the past few months that our members have found very helpful. These study groups are a great way of creating a community of peers to share useful study resources and methods for the LARE exams which can be very intimidating to get started on. Meetings happen twice a week on Wednesday evenings virtually and Sunday mornings in person. We are looking forward to starting up these study groups as well as adding more review sessions in December to include even more of our members!

We are also happy to announce that we are currently planning for a Meet the Fellows event later this year. More details to come soon, but we hope to see all of you there. This will be a great opportunity to meet other emerging professionals and fellows from our San Diego chapter.

**Good luck to all our members taking the LARE exam this August!**

If you are interested in participating in these study groups or have any questions regarding EPC, please contact Fernanda Suarez ([fsuarez@migcom.com](mailto:fsuarez@migcom.com)) or Gwen Stark ([gwen@ktua.com](mailto:gwen@ktua.com)).



**High Quality**



We are Southern California's resource for high quality outdoor products – representing the finest manufacturers in the outdoor recreation industry. Whether you are looking for outdoor shade systems, site furniture, playground equipment or surfacing, we are here to help. Discover and create the products you need to realize your vision. Contact us today for more information. **714.619.0100** or [coastrecreation.com](http://coastrecreation.com)

**reproHAUS**

COMPUTER INNOVATION

GRAND FORMAT SIGNAGE 3D PRINTING TECH SERVICES

HANNERS WINDOW GRAPHICS WAYFINDING CONSTRUCTION PROTOTYPING MODELING MANAGED PRINT

BUILDING WRAPS WALL MURALS RETAIL 3D SIGNAGE CMYK FULL COLOR HIGH DEFINITION FACILITIES MANAGEMENT

FLOOR GRAPHICS TRADE SHOW ADVERTISING DECOR ENHANCED ACCURACY PHOTO REALISTIC DOCUMENT MANAGEMENT

BILLBOARDS VEHICLE WRAPS COMMERCIAL REAL ESTATE ECO-FRIENDLY FAST TURNAROUND IT SERVICES

ORDER ONLINE: [WWW.REPROHAUS.NET](http://WWW.REPROHAUS.NET)





ABOUT THE AUTHOR  
**Patricia Trauth, ASLA**  
CHAPTER TRUSTEE

Our ASLA National Trustee Meetings were held virtually on April 27th & 28th. We had elections for Vice President of Membership, Jennifer Nitzky from New York and April Westcott from Indiana ran for the position. For Vice President of Professional Practice, Marieke Lacasse from Washington, and Jean Senechal-Biggs from Oregon ran for the position.

As your Trustee representing the San Diego chapter, I vote for the Vice President positions - April Westcott and Jean Senechal-Biggs were elected. For President Elect Haley Blakeman from Louisiana and Kona Gray from Florida ran for the position. Voting ended June 2nd and results are pending.

**CLIMATE ACTION PLAN 2040 Vision** – the 3 goals that comprise the national ASLA Climate Action Plan are: 1.) Practice (carbon draw down) 2.) Equity (cultural empowerment) and 3.) Advocacy (climate leadership). 20 Chapters now have a Climate Action Committees.

A movie called **KISS THE GROUND** was discussed. This short educational film is designed to inspire individuals to take action around regenerative agriculture and climate change. I encourage all of you to google and check it out at the following link: <https://www.asla.org/search.aspx?q=Kiss%20the%20Ground>

A video called **DREAM BIG with Design** is part of a two-day virtual event that allows pre-kindergarten through grade 12 students and educators to experience landscape architecture through live sessions.

The Trustees also received an update on the **ASLA Fund** and the **Landscape Architecture Foundation**, two non-profit organizations with which ASLA is affiliated.

Feel free to contact me if you have any questions.

**CONTACT PATRICIA**



# VOLUNTEER OPPORTUNITIES

## Get involved!

Volunteer on one of our committees or as part of the board! Meet other landscape architects and become part of our local landscape architecture community.

[VOLUNTEER FORM](#)



*leadership*  
grows here.

# PARKING DAY 2023: UNLEASH CREATIVITY THROUGH COLOR AND SHAPES



ABOUT THE AUTHOR

**Wei Wang, ASLA**

CUPSS AND PARKING DAY CHAIR

WELCOME TO PARKING DAY 2023, WHERE ART, COMMUNITY, AND URBAN TRANSFORMATION CONVERGE! ON SEPTEMBER 15, WE INVITE YOU TO JOIN US IN A CELEBRATION OF PUBLIC SPACES AND CREATIVE EXPRESSION. IN THIS ARTICLE, WE WILL EXPLORE THE HISTORY, GOALS, AND MISSION OF PARKING DAY, AND HIGHLIGHT HOW THE CONCEPTS OF “THREE PRIMARY COLORS” AND “SIMPLE GEOMETRIC SHAPES” INTERTWINE WITH THE THEME OF INSTALLATION ART, MAKING YOUR PARTICIPATION ESSENTIAL.



**COLOR**



**SHAPE**



## The History of Parking Day:

Parking Day traces its roots back to 2005, when Rebar, a design firm from San Francisco, transformed a parking space into a temporary public park. This pioneering act sparked a global movement that empowers communities to reclaim urban spaces and challenge the dominance of cars. Over the years, Parking Day has grown exponentially, inspiring cities worldwide to rethink the possibilities of their public realms.



### **The Goal and Mission of Parking Day:**

At its core, Parking Day aims to challenge conventional notions of urban design and advocate for more people-centered public spaces. By temporarily converting parking spaces into interactive parks, we strive to foster community engagement, spark dialogue about urban planning, and encourage a shift towards sustainable, pedestrian-friendly environments. Parking Day invites us all to reimagine the potential of our cities.

### **Parking Day 2023 in Chula Vista:**

This year, Parking Day aligns with the global movement for sustainable urban development. By participating on September 15, 2023, we aim to highlight the significance of accessible public spaces, community involvement, and holistic approaches to social sustainability. Through collaboration with the City of Chula Vista, we will collectively contribute to shaping cities that prioritize the well-being and unleash the creativity of their residents.

### **The Theme of Parking Day - Installation Art:**

Parking Day 2023 explores the world of installation art, where creativity knows no bounds. At the heart of installation art lie “three primary colors” and “simple geometric shapes.” The primary colors—red, blue, and yellow (we’ll include green)—represent the foundational hues that can be mixed to produce an infinite spectrum of shades and tones. Similarly, simple geometric shapes, such as circles, squares, and triangles, form the building blocks of complex installations.

Installation art leverages the relationship between primary colors and geometric shapes to create captivating visual experiences. All the participants are encouraged to infuse their temporary parklets with vibrant colors, geometric patterns, and imaginative forms. By utilizing these elements, we transform parking spaces into dynamic, interactive environments that engage the senses and ignite the imagination of passersby.

## We Need Your Participation:

Parking Day thrives on collective action, and your participation is crucial for its success. By joining in the Parking Day 2023, we can:

**Amplify Creativity:** By contributing your unique perspectives and artistic ideas, you help enrich the creative tapestry of Parking Day. Your presence adds depth and diversity to the installations, inspiring others and generating a truly vibrant atmosphere.

**Empower Community Engagement:** Parking Day offers an opportunity to strengthen community bonds. By participating, you contribute to building a sense of shared ownership and pride in our public spaces, fostering connections and inspiring collaboration among neighbors.

**Advocate for People-Centered Design:** Your participation in Parking Day sends a powerful message: that our cities should prioritize people over cars. By reclaiming parking spaces for creative expression, we challenge the status quo and advocate for pedestrian-friendly environments that promote well-being and community interaction.

**Contact me at [wwang@vdl.a.us](mailto:wwang@vdl.a.us) to help organize this year's event.**





# UPCOMING EVENTS & MEETINGS

## AUGUST

- 2 EXECUTIVE COMMITTEE MEETING 6PM**  
LPA DESIGN, LIBERTY STATION
- 5 BOY SCOUT LANDSCAPE ARCHITECTURE MERIT BADGE EVENT | POINT LOMA**  
NAZARENE UNIVERSITY  
**CONTACT**
- 11 ASLASD CHAPTER ELECTIONS WRAP UP**
- 17 ASLA COMMUNITY GRANT APPLICATIONS DUE**  
**EMAIL FORM**
- 29 CHAPTER ELECTON RESULTS TO ASLA NATIONAL**
- 31 CHAPTER DUES REPORT TO ASLA NATIONAL**

## SEPTEMBER

- 6 EXECUTIVE COMMITTEE MEETING 6PM | ONLINE**
- 1 2024 COMMUNITY GRANT, APPLICATION POSTED ONLINE, [ASLA-SANDIEGO.ORG](https://www.asla-sandiego.org)**
- 15 E-NEWSLETTER ARTICLES DEADLINE FOR OCTOBER-DECEMBER EVENTS AND PROGRAMS**
- 15 PARKING DAY VOLUNTEERS NEEDED**  
CONTACT WEI WANG  
**EMAIL WEI**
- TBA MEET THE FELLOWS EVENING AT THOMPSON BUILDING MATERIALS | 5:30PM – 8PM**  
**RSVP**

**CHECK OUT OUR WEBSITE** FOR ALL OUR CURRENT & UPCOMING EVENTS

**ASLASD EVENTS**

# SAN DIEGO CHAPTER 2022/2023 EXECUTIVE COMMITTEE

## **PRESIDENT**

**Martin Armstrong, ASLA**  
Landscape Architect  
805.794.5525

## **PRESIDENT ELECT – FUNDRAISING**

**Jacqueline Higgins, ASLA**  
Forever Balboa Park  
619.218.4148

## **SECRETARY**

**Alexander Wade, ASLA**  
Rick Engineering  
619.291.0707

## **PAST PRESIDENT**

**Patricia Ferman, ASLA**  
City of Chula Vista  
619.954.5466

## **VP COMMUNITY OUTREACH**

**Difan Chen, ASLA**  
KTUA Landscape Architecture & Planning  
607.793.8866

## **VP PROGRAMS/EDUCATION**

**Kenya Huezo, ASLA**  
MIG, Inc.  
619.795.2555

## **PROGRAMS/SOCIAL CHAIR**

**Eden Bouchard, ASLA**  
Kimley Horn  
619.234.9411

## **Elissa Urbina, ASLA**

GroundLevel  
619.984.4840

## **VP VISIBILITY/PUBLIC AFFAIRS**

**Ruoxi (Cisy) Cao, Associate ASLA**  
KTUA  
619.294.4477

## **CHAPTER TRUSTEE**

**Patricia Trauth, ASLA**  
Rick Engineering Co.  
619.278.5656

## **CALIFORNIA COUNCIL OF ASLA**

**Martin Schmidt, ASLA**  
DeLorenzo International  
858.430.6155

## **Phil Armstrong, ASLA**

The Lightfoot Planning Group  
760.692.1924

## **EMERGING PROFESSIONAL CO-CHAIRS**

**Gwen Stark, ASLA**  
KTUA  
619.294.4477

## **Fernanda Suarez, ASLA**

MIG  
619.682.3841

## **CLIMATE ACTION COMMITTEE**

**Stephanie Green, ASLA**  
Landscape Architect  
619.630.8730

## **GOLF COMMITTEE CO-CHAIRS**

**Jacqueline Higgins, ASLA**  
Forever Balboa Park  
619.218.4148

## **Gregg Roesink**

Hunter Industries  
760.703.2474

## **PUBLIC SPACES ADVOCACY COMMITTEE**

### **Wei Wang, ASLA**

Van Dyke Landscape Architecture  
858.504.0392

## **EXECUTIVE DIRECTOR**

### **Tracy Morgan Hollingworth**

1050 Rosecrans St., Ste. B  
San Diego, CA 92106  
619.283.8818

## **ASLAD NEWSLETTER DESIGNER**

### **Kari Cureton**

Sarit + State Creative Studio  
619.318.3454

# ASLA NATIONAL EXECUTIVE OFFICERS

# CALIFORNIA COUNCIL OF ASLA 2022/2023 EXECUTIVE BOARD

## **PRESIDENT**

Emily O'Mahoney, FASLA

## **PRESIDENT ELECT**

SuLin Kotowicz, FASLA

## **IMMEDIATE PAST PRESIDENT**

Eugenia Martin, FASLA

## **CEO/EVP**

Tony Carter-Conneen,  
Affiliate ASLA

## **VP COMMUNICATIONS**

Monique Bassey, ASLA

## **VP EDUCATION**

Ebru Ozer, FASLA

## **VP PROFESSIONAL PRACTICE**

Adrian Smith, FASLA

## **VP FINANCE**

Chris Della Vedova, FASLA

## **VP GOVERNMENT AFFAIRS**

Joy Kuebler, FASLA

## **VP MEMBERSHIP**

Brad McCauley, ASLA

## **SECRETARY**

Curt Millay, ASLA

## **TREASURER**

Michael D. O'Brien, Hon. ASLA

## **PARLIAMENTARIAN**

Susan Jacobson, ASLA

## **SIERRA CHAPTER**

Andrew Wickham, ASLA (Gov't Affairs)  
916.287.2326

Dalton La Voie, ASLA

916.669.5913

## **SOUTHERN CALIFORNIA CHAPTER**

Jim Pickel, ASLA (Secretary/Website)  
714.930.6959

Stephanie Landregan, ASLA

310.825.1735

## **SAN DIEGO CHAPTER**

Phil Armstrong, ASLA (President)  
760.415.24.26

Marty Schmidt, ASLA (Vice President)

619.619.275.3003

## **NORTHERN CALIFORNIA CHAPTER**

Ric Hendricks, ASLA (Treasurer)  
805.441.7537

Brodie Hegg, ASLA

209.652.9399

## **LOBBYISTS**

Jason Ikerd & Bridget McGowen  
Edelstein Gilbert Robson & Smith, LLC  
916.443.6400

## **LATC RESOURCE**

Jon Wreschinsky, ASLA  
619.916.6956

## **LATC PROGRAM MANAGER**

VACANT

## **CCASLA EXECUTIVE DIRECTOR**

Tracy Morgan Hollingworth  
619.283.8818

[cc-asla.org](http://cc-asla.org)

# THANK YOU TO OUR 2023 SPONSORS

# T.B. PENICK & SONS, INC.



**modern**  
BUILDERS SUPPLY



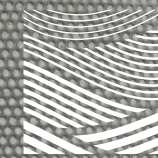
**FORMS+SURFACES®**



landscapeforms



BENCHMARK LANDSCAPE ▶ GRO-POWER INC. ▶ RCP BLOCK & BRICK  
SOCAL SHADE SAILS ▶ SPRUCE AND GANDER ▶ THE LIGHTING ELEMENT ▶ TOURNESOL



## Connect with Us



[asla-sandiego.org](http://asla-sandiego.org)

Mailing Address:  
1050 Rosecrans Street, Suite B  
San Diego, CA 92106

619.283.8818