

# AS LA SD

VENUES



URBAN PARKS



SHORELINE PARKS & BEACHES



REGIONAL PARKS



DIGITAL NEWSLETTER

WINTER 2023



**2022 HONOR AWARD:**  
**CITY OF SAN DIEGO**  
**PARKS MASTER PLAN**  
BY CITY OF SAN DIEGO



CULTURAL RESOURCES

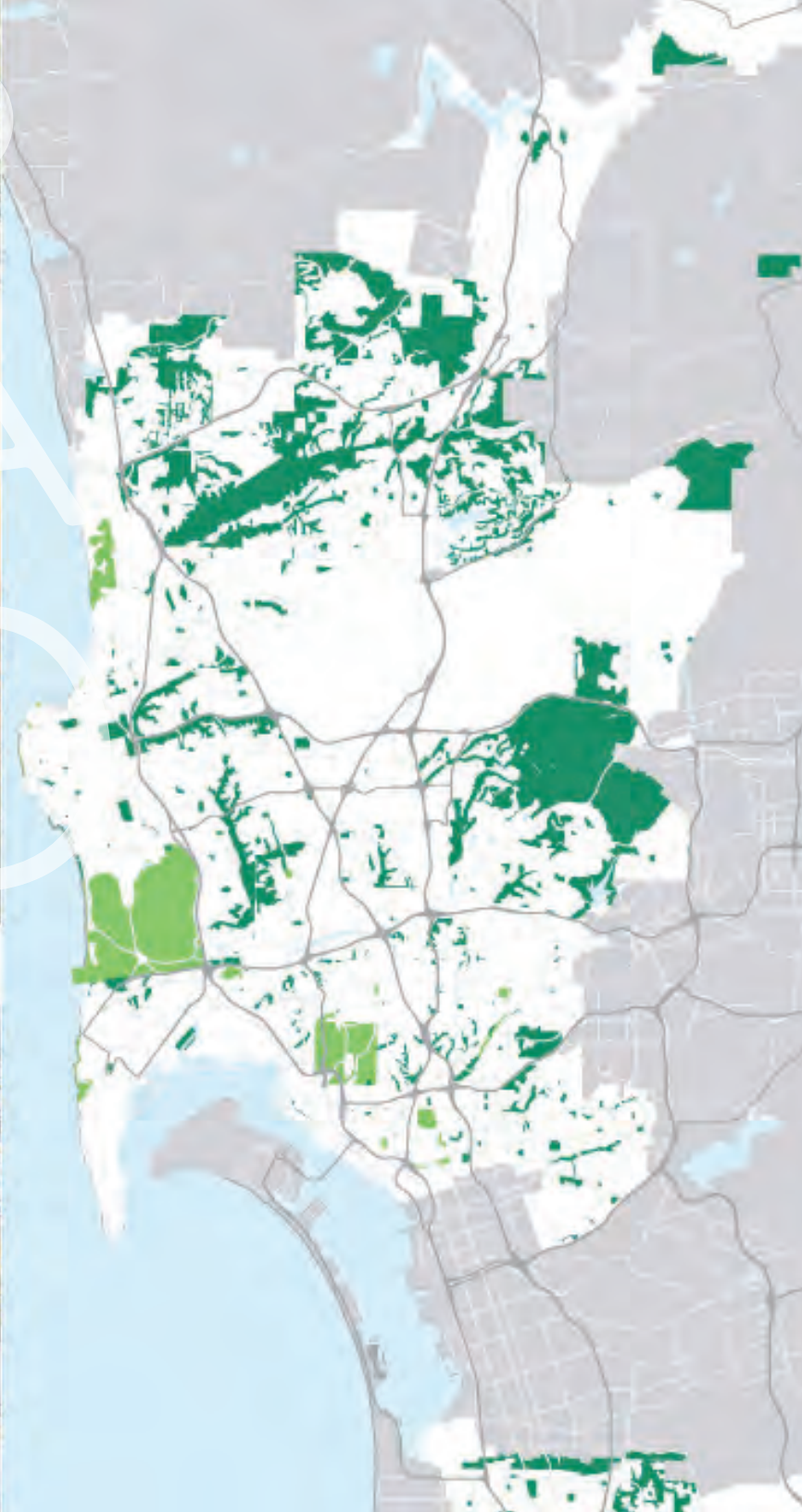


NEIGHBORHOOD PARKS



GREENWAYS & TRAILS

COMPLETE STREETS



[asla-sandiego.org](http://asla-sandiego.org)

## VISION

A world where the built and natural environments coexist in harmony and sustainable balance, where all peoples can express their diverse heritage and their individual desires to grow and thrive; and where we, as a profession, can substantially contribute to the process of achieving these ends.

## MISSION

To lead, to educate and to participate in the careful stewardship, wise planning and artful design of our cultural and natural environments.



## 4 President's Message

MARTIN ARMSTRONG, ASLA



## 6 Holiday Event Fun!

EDEN BOUCHARD, ASLA



## 10 Native Plant Policy Adapted by SD County

JOY LYNDES, FASLA  
GLEN SCHMIDT, FASLA



## 12 Committee on Urban Public Social Spaces – Who We Are

WEI WANG, ASLA



## 22 LA Gains More Visibility via Service on Boards + Commissions

TRACY MORGAN  
HOLLINGWORTH, MPA, CAE



## 25 ASLASD Priorities Results are In!

MEMBERSHIP UPDATE ..... [14](#)  
TRUSTEE UPDATE ..... [18](#)  
CLIMATE ACTION COMMITTEE UPDATE ..... [20](#)  
RDAC UPDATE ..... [21](#)

CCASLA UPDATE ..... [26](#)  
ASLASD EVENTS ..... [28](#)  
ASLA SAN DIEGO EXECUTIVE BOARD ..... [29](#)  
SPONSORS ..... [30](#)

# PRESIDENT'S MESSAGE



**MARTY ARMSTRONG, ALSA**

CHAPTER PRESIDENT

## I am honored to be the ASLA San Diego President for 2023.

While the events of the past few years have been unprecedented, our Landscape Architecture Community continues to be a primary component of San Diego's economy, by creating and improving tourism destinations, educational campuses, corporate campuses, housing, recreational open spaces, and environmental stewardship.

As a native to San Diego, I actively enjoy our natural outdoor gems, so feel free to join me in the Pacific (dive, surf, swim), a mountain bike ride or trail run, photography in Borrego or hiking the miles of amazing trails our profession has built and preserved over the decades in keeping our community healthy.

ASLA works to bring value to our members through legislative advocacy, educational offerings, networking, events and awards. We are proud of members' accomplishments and grateful to our sponsors and supporters. Here's to a great 2023!

# MEET YOUR 2023 BOARD OF DIRECTORS!



## Get involved!

Volunteer on one of our committees or as part of the board! Meet other landscape architects and become part of our local landscape architecture community.

[VOLUNTEER FORM](#)

# HOLIDAY EVENT FUN



ABOUT THE AUTHOR

**EDEN BOUCHARD, ASLA**

VP PROGRAMS + SOCIAL ACTIVITIES

## The chapter hosted the annual meeting and holiday gala at the Bahia Resort hotel.

This year's event was a joyous time for professionals to get together face-to-face and celebrate a great year for landscape architecture in San Diego.

The Chapter would like to thank Joshua Siepel with SiteOne Green Tech for being this year's Title Sponsor, Courtney Colby with Belgard for being an Event sponsor, and Kelly Broughton, FASLA for being our Reception sponsor. Patricia Ferman, our 2022 chapter President handed off her duties to the 2023 chapter President Marty Armstrong.

The chapter honored Patricia for her commitment with our appreciation for her service as President. Thank you Patricia it has been a great year with you as our President.

The Board of Directors and executive committee chairs for 2023 were introduced. Please see and thank those in the list of volunteers on [page 5](#).





Marty presented this year's community grant award to Cardiff-by-the-Sea Foundation for Harbaugh Seaside Parkway. Rich Risner took us along on his journey in getting this green space designed and into the city for review. He has dedicated his free time to creating something better for his community and called on the other chapter members to do the same in their own communities.



This year's Stewardship Award went to PARC (Parks and Recreation Coalition) for the City of San Diego Parks Master Plan Improvements. The committee was in attendance to accept this award and a committee member, Howard Greenstein, gave a very informative acceptance speech on the history of PARC and how they have helped shape the public spaces we all utilize today.



Marty ended this year's announcements by asking the chapter to engage their office staff to volunteer, this year we have a couple openings for volunteers and dedicating time to a professional organization like ASLA is a great way to give back to your community.

**This year we look forward to our great annual events and some [new events](#).** Please join us at our annual Kick off on February 2nd at Thompson Building Materials!



FUN  
FUN  
FUN





FUN  
FUN  
FUN

# NATIVE PLANT POLICY ADOPTED BY SAN DIEGO COUNTY



ABOUT THE AUTHORS

**JOY LYNDES, FASLA**

CITY OF ENCINITAS DEPUTY MAYOR



**GLEN SCHMIDT, FASLA**

SCHMIDT DESIGN GROUP

**San Diego County is the most biodiverse county in the United States. Torrey pines, coastal live oaks, coastal sage are just a few of the over 1,500 native plant species in our region. Maintaining and expanding that regional biodiversity in our natural open spaces, habitat corridors, and urban landscape areas improves pollinators and reduces habitat fragmentation. This will contribute greatly to climate resiliency throughout our region.**

Several (5) leading landscape architects were part of the 57 person Regional Biodiversity Working Group technical committee. We were invited to participate in developing this new policy for public and private properties which will advance the use of native plants in both our urban and rural zones in San Diego.

Native plants improve adaptivity and resilience. In line with climate action plans, they meet our sustainability goals, fire management plans, and stormwater management.

Policy, incentives, education programs, reference resources, demonstration gardens, design templates, and outreach are proposed in the policy. Tribal knowledge on respecting native biodiversity is also proposed in the framework in the voluntary program of best practices.

This new county policy for native plants in our region establishes an important model of incentives and best practices which other jurisdictions could also benefit from. With the clear benefits of improving resilience and sustainability this new policy will help us achieve our climate action plan and other environmental goals.

The County staff report outlines the ordinance and timeline for implementation at the following link:

[ORDINANCE REPORT](#)



# BRINGING YOUR DESIGN INTENT TO REALITY SINCE 1905.



*Old Town San Diego State Historic Park (San Diego, CA) (Lithomosaics), Legoland Lego Movie World (Carlsbad, CA) (Imprinted Concrete & TBP Coloration System), San Diego Children's Zoo - Wildlife Explores Basecamp (San Diego, CA) (TBP Coloration System), 3rd Street Improvements (Phase 2) (Las Vegas, NV) (Lithocrete), San Diego Symphony - The Rady Shell at Jacobs Park (San Diego, CA) (Quarried Stone & Honed Concrete), Sunnyvale Sedimentary Wall (Sunnyvale, CA) (Lithocrete Sedimentary Walls)*

For more than a century T.B. Penick & Sons, Inc. has been providing owners, architects, contractors, and specifiers like you, with the most advanced technologies in concrete materials and finishes. We enthusiastically support your vision, bringing quality, craft, and long-term value to those projects you wish to create. We look forward to working with you, ensuring that your design intent is accurately realized each and every step of the way.



858-558-1800 | [www.TBPenickICS.com](http://www.TBPenickICS.com)  
LITHOCRETE® TERRAZZO SITE CONCRETE

**T.B. PENICK  
& SONS, INC.**

JOIN ASLA-SAN DIEGO FOR OUR

# 2023 KICKOFF EVENT

**THURSDAY  
FEBRUARY 2  
5:30-8 PM**

**THOMPSON  
BUILDING  
MATERIALS**

**6618 FEDERAL BLVD  
SAN DIEGO 91945**

**PIZZA,  
CRAFT BEER  
& WINE**

**COURTESY OF  
THOMPSON**



**[HTTPS://2023KICKOFF.BPT.ME](https://2023kickoff.bpt.me)**

Free with online RSVP by January 30

Questions? #619.283.8818 or [ASLASD@sbcglobal.net](mailto:ASLASD@sbcglobal.net)

## COMMITTEE ON URBAN PUBLIC SOCIAL SPACES: WHO WE ARE



ABOUT THE AUTHOR

**Wei Wang, ASLA**

CUPPS CHAIR

The Committee on Urban Public Social Spaces (CUPSS) is a new committee within the San Diego Chapter of the American Society of Landscape Architects (SDASLA). It is an interdisciplinary community who are interested in increasing people's awareness of the importance of "social sustainability" in the public realm, through design and planning strategies.

### WHY PUBLIC SOCIAL SPACE?

As a matter of fact, the most widely accepted concept of sustainable development is built upon the three pillars of sustainability: Environment, Economic and Social/Society. It has also been described as "3E", which are Environment, Economy and Equity; or "3P", which are Planet, Profit and People. The three components are theoretically playing equally essential roles in the sustainable development model. Unlike the other two components, social sustainability has been largely overlooked and misunderstood over time, both in the public's perspectives and the professional design and planning disciplines.

To address the "neglectfulness" of the social aspect, as well as the spacial constraints of the urban public social space, our committee is aiming to create (and will continue to develop) a

tentative concept for promoting the urban public social space both physically (spatially) and culturally (socially) in San Diego County. In the County, candidate urban public spaces include plazas, promenades, complete streets, mini-parks, and other underutilized public spaces that contribute to human mental well-being by providing the optimal location to host regular social interactions and special events.

However, wherever there is a need in the County, and interested stakeholders have been identified, this committee will take the action to advocate and coordinate toward that effort.

## MISSION:

- ✓ We appreciate public spaces that not only offer a high-quality physical experience but also facilitate the connections and interactions between people to people, as well as, people and the spaces.
- ✓ We inspire all the communities to be mindful when being in a public space, impacted by the physical and cultural elements, through place-making.
- ✓ We encourage the public, organizations, and government to increase attention to establishing social-sustainable communities through innovative design practices and replicable models.
- ✓ We celebrate the values of public spaces and happiness for communities by incorporating nature, culture, and new technologies through creative design strategies.

## JOIN THE CUPSS COMMITTEE

as we develop “social sustainability” in the public realm, through design and planning strategies.

Contacting Wei through the ASLA website at the button above.

CONTACT WEI

## GOALS:

- 1. Increasing Awareness:** To inspire the public’s awareness of social and environmental justice, through public space improvement projects in San Diego County.
- 2. Participatory and Interdisciplinary Design Practice:** To evolve the different groups of communities: scientists, designers/planners, stakeholders, decision-makers, and the general public, to participate the sustainable design decision-making, through public space improvement projects in San Diego County.
- 3. Building Replicable Models:** To develop design models/ cases of socially-oriented public space with rational, replicable, strategic approaches, through public space improvement projects in San Diego County.

## OBJECTIVES:

- 1. Identify candidate public space:** via GIS methodology or local knowledge and outreach to key stakeholders.
- 2. Evaluate and analyze:** the Ecological, Physical, and Cultural aspects. Comprehensively understand SITE’s constraints and opportunities for improvement to happen.
- 3. Understand Legal challenges and collaboration opportunities:** of public spaces improvement and all the potential stakeholders, communities, and organizations.
- 4. Development design strategies and solutions:** case by case, building landscape profiles and experimenting/ establishing new design/planning models.

# MEMBERSHIP UPDATE

Happy New Year! We hope all of our members had a wonderful holiday season. Welcome to our new and returning members, and thanks for your support of the San Diego ASLA Chapter. Hope to see everyone soon at future events, like the upcoming kickoff event.

## WELCOME TO OUR RETURNING MEMBERS!

Karen Adams, ASLA; Glenn Asakawa, ASLA; Lucas Conlin, Student ASLA; Kendal Heiskala, Student ASLA; Nico King, Student Affiliate ASLA; Erin M. Leugers, ASLA; Joshua Lewis, Student Affiliate ASLA; Nilo Ondevilla, Student Affiliate ASLA; Alejandro Torres, Student Affil ASLA; Michael Tully, ASLA; Wei Wang, Associate ASLA; Brooke Whalen, ASLA

## MEMBERSHIP ANNIVERSARIES

Congratulations to the following members for reaching membership milestones (member anniversaries in January through March are for continuing membership).).



ABOUT THE AUTHOR

**Kenya Huezo, ASLA**

VP MEMBERSHIP

## 6 - 10 YEARS

**2017** Kenya Huezo, ASLA; Kristi M. Lin, ASLA

**2016** Byron Brink, ASLA; Anne-Emilie Gold, ASLA; Julianne Pineda, ASLA; Jay A. Rohrer, ASLA

**2015** Ryan Prange, ASLA

**2014** Amy B. Hoffman, ASLA

**2013** Joe Dodd, ASLA; Tom Williams, ASLA

## 1 - 5 YEARS

**2022** Denise Armijo, Affiliate ASLA; Jonathan Avila, ASLA; Richard Barrett, ASLA; Eden Rain Bouchard, Associate ASLA; Philip Bronson Gann, Associate ASLA; Ryley Chase, Student ASLA; Katherine Lee Dickerson, Student Affiliate ASLA; Nathan Fadick, Student ASLA; Erika Eifler, Affiliate ASLA; Tatiene Guia, Associate ASLA; Samantha Jay, Student Affiliate ASLA; Gabriel Kucinski, Student ASLA; Amber Lake, ASLA; Gary McCune, Student Affiliate ASLA; Andrew Montijo, Student ASLA; Danielle Parsons, Student Affiliate ASLA; Nicolas Villalvazo, Student ASLA

**2021** Frederick Besancon, ASLA; Steven Hutter, ASLA; Mary Radley, ASLA

**2020** Katie Blair Hartman, ASLA; Michael H. Spohr, ASLA

**2019** KRuoxi Cao, ASLA; Mark E. Moss, ASLA; Daniel Jaime Rodriguez, ASLA

**2018** Timothy M. Henderson, ASLA; Todd M. Schechinger, ASLA

## 11 - 20 YEARS

- 2012** Michael Brennan, ASLA; Ian Morris, ASLA
- 2011** Jennifer Montgomery, ASLA
- 2010** Jacqueline Higgins, ASLA
- 2007** Jeffrey S. Smith, ASLA
- 2006** Todd Steven Pitman, ASLA; Richard Risner, ASLA
- 2005** Kyle Fiddelke, ASLA; Tracy Morgan Hollingworth, Affiliate ASLA
- 2003** Nathan S. Elliott, ASLA; David W. McCullough, ASLA; Kent A. Wilson, ASLA

## 40+ YEARS

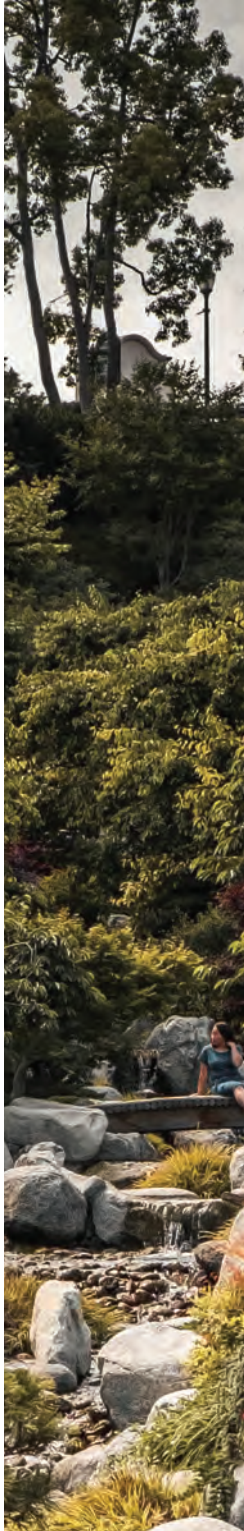
- 1980** Joseph F. Chisholm, ASLA; Richard C. Garbini, ASLA
- 1979** John R. Bardin, ASLA; Thomas W. Blessent, ASLA
- 1978** Vicki Estrada, FASLA
- 1977** Dennis Y. Otsuji, FASLA
- 1975** William J. Briggs, ASLA
- 1974** Roger DeWeese, FASLA
- 1969** Frank H. Kawasaki, FASLA

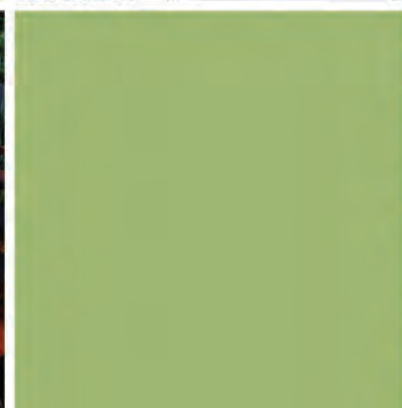
## 21 - 30 YEARS

- 2002** Kent A. Wilson, ASLA; David W. McCullough, ASLA
- 2000** Joel Harms, ASLA
- 1995** Joy Erin Lyndes, FASLA
- 1993** Joseph R. Esposito, ASLA

## 31 - 40 YEARS

- 1990** Lawrence J. Sheehan, III, ASLA
- 1989** JDouglas E. Livingston, ASLA; Martin F. Schmidt, ASLA; Andrew J. Spurlock, FASLA; James Lynn Taylor, ASLA
- 1987** Maria D. Marquez, ASLA
- 1986** Deborah A. Sharpe, ASLA
- 1984** Jon Becker, ASLA; Mark A. Steyaert, Jr., ASLA; Donald R. Thibedeau, ASLA





# 5TH ANNUAL SAN DIEGO INSTAGRAM TAKEOVER

IN CELEBRATION OF  
WORLD LANDSCAPE  
ARCHITECTURE MONTH  
APRIL 2023

ONLY 18 SPOTS AVAILABLE!

*Sign up & learn more at:*  
[https://bit.ly/ASLASD\\_IGTO23](https://bit.ly/ASLASD_IGTO23)







**High Quality**

**reproHAUS**

COMPUTER INNOVATION

TECH SERVICES

MANAGED PRINT

IT SERVICES

GRAND FORMAT SIGNAGE 3D PRINTING

BANNERS WINDOW GRAPHICS WAYFINDING CONSTRUCTION PROTOTYPING MODELING

BUILDING WRAPS WALL MURALS RETAIL 3D SIGNAGE CMYK FULL COLOR HIGH DEFINITION

FLOOR GRAPHICS TRADE SHOW ADVERTISING DECOR ENHANCED ACCURACY PHOTO REALISTIC

BILLBOARDS VEHICLE WRAPS COMMERCIAL REAL ESTATE ECO-FRIENDLY FAST TURNAROUND

ORDER ONLINE: WWW.REPROHAUS.NET

Facebook @reprohaus.com Twitter @reprohaus.com



We are Southern California's resource for high quality outdoor products – representing the finest manufacturers in the outdoor recreation industry. Whether you are looking for outdoor shade systems, site furniture, playground equipment or surfacing, we are here to help. Discover and create the products you need to realize your vision. Contact us today for more information. **714.619.0100** or [coastrecreation.com](http://coastrecreation.com)



# TRUSTEE UPDATE



ABOUT THE AUTHOR  
**Patricia Trauth**  
CHAPTER TRUSTEE

**Over 6,000 people attended the ASLA 2022 Conference on Landscape Architecture in San Francisco with successes in multiple areas of the conference.** This year, ASLA offered field sessions on both Friday and Monday with great attendance. The Professional and Student Awards Ceremony took place on Friday afternoon, November 11, and was close to standing room only. The general session on Saturday morning was well received with speaker, Dr. Ayana Elizabeth Johnson (appearing remotely) and moderator Kate Orff, FASLA, in conversation. LABash Block Party (formally known as the Alumni Tailgate reception), had over 40 schools represented on the EXPO floor, and for the first time, was live streamed to select schools. SKETCH! was wildly successful with Chip Sullivan and attendees sketching in aisles and anywhere they could put pencil to paper.

Torey Carter-Conneen launched the ASLA Climate Action Plan at the Saturday morning General Session on November 12. Nearly 2,000 conference registrants attended the session, The Blue-Green Connection: Water and Land in Climate Action, featured a keynote discussion with Dr. Ayana Elizabeth Johnson, moderated by Kate Orff, FASLA, Founding Principal of SCAPE.

The education programs featured 114 education sessions, 24 field sessions, six deep dive sessions, three workshops, and one general session with nearly 275 speakers contributing to the program.

The Board of Trustees approved the 2023 annual operating plan and the 2023-2024 operating and capital budgets. We also approved five public policies that were updated and proposed by the Policy Committee – Environmental Justice, Housing, Human Health & Welfare, Transportation Corridors and Facilities, and Universal Design. These policies clearly state the ASLA position on each issue, justify landscape architects' interest and action in these areas, and provide reliable sources of information for members to cite throughout advocacy campaigns and when meeting with policymakers.

Emily O'Mahoney, FASLA, was installed as ASLA President and SuLin Kotowicz, FASLA, as President-Elect. Eugenia Martin, FASLA, will continue to serve as Immediate Past President for one year. Also installed were incoming VPs Monique Basse, ASLA, for Communications and Chris Della Vedova, ASLA, for Finance. Education VP Ebru Ozer, ASLA, Membership VP Bradley McCauley, ASLA, Professional Practice VP Adrian Smith, FASLA, and Government Affairs VP Joy Kuebler, ASLA, will continue to serve in their roles.

---

The New York Times ran several articles that mentioned landscape architects or touched on the field, including:

- » What Does Queens Need More, a New Park or a New Train Line?
- » Book Review: 'The Intimate City: Walking New York,' by Michael Kimmelman
- » The Colombian Architect Who Reimagined Modernism for a New Era
- » Remaking the River that Made L.A.

Professional Membership grew 11% across the last three months and a 6% increase over the last 12 months. This growth is primarily driven by the ongoing lapsed member campaign as well as the annual conference. The monthly lapsed members mailing has brought back over 1,430 people since its initial launch in March 2022.

**The ASLA 2023 Conference on Landscape Architecture will take place October 27-30 in Minneapolis, Minnesota!**



## JOY LYNDES, FASLA ELECTED TO ENCINITAS CITY COUNCIL

**The San Diego Chapter of ASLA is thrilled and proud to announce that one of our members, Joy Lyndes, FASLA, was elected to the Encinitas City Council on November 8.** She was sworn in to serve a full four year term as District 3 Council representative and was chosen by her peers to be Deputy Mayor.

**CONGRATS JOY! WE KNOW YOU  
WILL DO A GREAT JOB!**

# CLIMATE ACTION COMMITTEE UPDATE



ABOUT THE AUTHOR

**James Ryan**

CLIMATE ACTION COMMITTEE CHAIR

Since June, the Climate Action Committee has participated in numerous events and educational opportunities across Southern California. So far since it's founding in Winter 2022, the Climate Action Committee has engaged in drought education webinars with the San Diego County Water Authority, helped establish the foundations for a design competition based on the innovation of compost and mulch use (to support SB 1383), met with California and SD policy makers during Advocacy Day, and helped shape San Diego Legislation with Rep. Scott Peters. (CA-52). There are many more exciting things coming up in 2023.

## NET ZERO CONFERENCE

In September of this year, San Diego chapter of ASLA afforded me the opportunity to participate in the Net Zero conference in LA. While attending one of the educational sessions, I learned of more advanced methods and metrics to more accurately gauge climate change impacts. Using change in temp as a measure of determining how rapidly climate change is occurring is akin to looking at a burnt forest to see

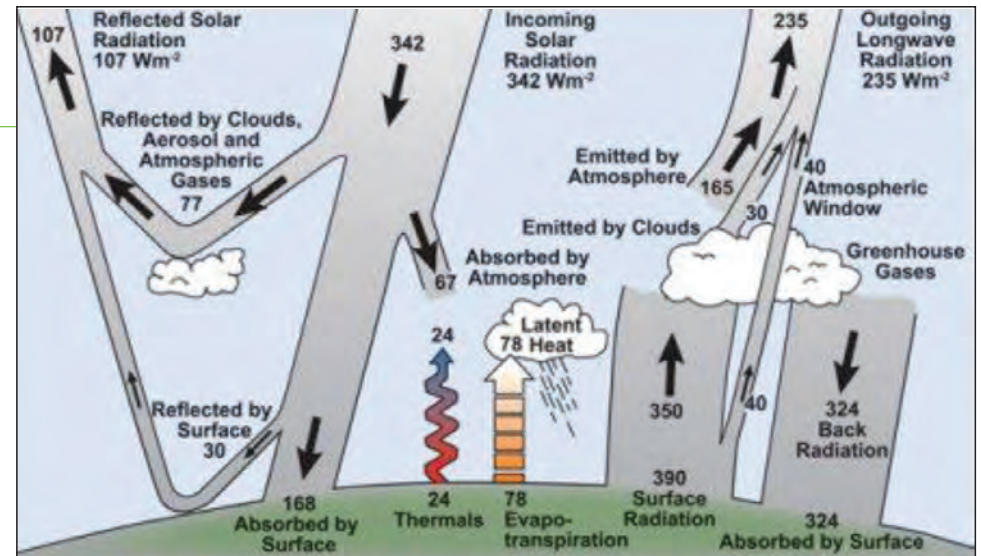


Figure 1 - Estimate of the Earth's annual and global mean energy balance. Over the long term, the amount of incoming solar radiation absorbed by the Earth and the atmosphere is balanced by the Earth and atmosphere releasing the same amount of outgoing longwave radiation.

if fuel modification needs to occur. The concept of Radiative Forcing is well defined by MIT as, "what happens when the amount of energy that enters the Earth's atmosphere is different from the amount of energy that leaves it." This measures a change in energy that accounts for variances in the interplay of GHG's and solar energy within Earth's atmosphere. By looking at the product of the energy that leaves the atmosphere, we can understand how to reduce the energy that is kept within our atmosphere by better understanding the variables present. During some of the networking events, committee partnerships began forming. The committee and I learned of the Climate Conference on April 22, 2023 at Magic Johnson Park in LA and will seek to advance climate action and awareness by supporting the SoCal ASLA leadership in organizing these efforts.

# REGIONAL DESIGN ADVISORY COUNCIL (RDAC) UPDATE



ABOUT THE AUTHOR

**TODD SCHECHINGER, ASLA, PLA**

AIA REGIONAL DESIGN ADVISORY COUNCIL

## **Hello fellow landscape architects, designers, and industry professionals,**

As we move into a new and exciting year, I'd like to take this opportunity to share an update from the Regional Design Advisory Council (RDAC). For those of you unfamiliar with this organization, we're a collective of design professionals, community/government leaders, and members of relevant organizations who meet monthly to discuss issues related to our built environment and public realm.

Several years ago, the RDAC formed as a merger between the AIA's Urban Design Committee (UDC) and the Environment & Design Council (E+DC), formerly led by ASLA SD's very own Vicki Estrada. Historically, the UDC addressed regional development, policy, and planning issues while the E+DC covered more environmental issues and planning. Over time there was noticeable overlap between the two groups thus the merger under the umbrella of the RDAC.

The RDAC has the support of AIA San Diego but our group is inclusive of all design industry professionals interested in actively participating and utilizing our shared design expertise to give back to our communities. ASLA San Diego's membership

engagement will offer an invaluable voice given the essential role landscape architecture holds in shaping our built environment. Your participation starts with simply reaching out and being added to the email list of monthly participants. Participation is always encouraged but completely voluntary.

Our Committee serves in an advisory capacity to design agencies, local municipalities, and the regional community. We discuss wide ranging topics including urban planning, environmental design, architecture, landscape architecture, development, transit, housing, and public policy. RDAC is a "big tent" forum of allied professionals working collectively to improve the San Diego region through advocacy and strategic design expertise. We also identify and promote best practices for policy, planning, and design to influence the priorities of the regional municipalities with the ultimate goal of addressing the region's needs for housing, neighborhood vitality, sustainability, equity, and thoughtful design.

We invite you to join us and hope you share in our enthusiasm for promoting "good" design in San Diego. Our passion for community building and creating harmony between the built and natural environments is the common thread that unifies us. We look forward to an incredible 2023 and best wishes to you all.



**TO BE ADDED TO THE RDAC MEETING EBLAST**

**CONTACT TODD**

**CONTACT LEIGH**

# LANDSCAPE ARCHITECTURE GAINS MORE VISIBILITY VIA SERVICE ON BOARDS AND COMMISSIONS



ABOUT THE AUTHOR

**TRACY MORGAN HOLLINGWORTH, MPA, CAE**

SDASLA EXECUTIVE DIRECTOR

Many ASLA Chapter members have served on local boards and commissions which help public agency staff and elected officials understand the value landscape architects bring in developing new public policies concerning water conservation, new building codes impacting landscape design and climate change initiatives.

The process to become appointed to boards and commissions is not difficult since board and commission volunteers come and go throughout the year. Most cities and counties have a page on their website listing both the term expirations for various board members and

commissioners and vacancies that become available. Larger cities often give the appointment power to the Mayor and other cities bring board appointments to the full City Council for a vote of the Mayor and City Council.

If you have an interest in joining a municipal board, our Chapter can send a letter of support to the Mayor and City Council or Board of Supervisors for your appointment. We encourage members to let their local City Councilmember or Supervisor (in the district in which you reside) know that you are applying for an appointment so your councilmember can confirm if there are others competing for an appointment and encourage other Councilmembers and Mayors or County Supervisors to support your appointment.

Be sure to determine who is the appointing authority (Mayor or City Council or Chair of the Board of Supervisors) so you will know who to contact to follow up on your appointment application to confirm its receipt.

The City or County Clerk will be asked to place your appointment on an upcoming city/county agenda for a vote of their body. When you find out when the appointment will be heard, be sure to attend that meeting. Local officials often ask appointees to say a few words about their qualifications especially if there is more than one applicant to fill individual Board and Commission vacancies.

The list of cities and the county board and commission opportunities on the following pages are a snapshot of the types of Boards that advise City Councils and municipal staff on planning, design, historic preservation

and many other fields where landscape architects can play a role in their cities.

Use the following links to view the Board or Commission responsibilities, appointment vacancies and expirations and the appointment online application or forms. Contact the City or County Clerk for a recent list and application.

### CARLSBAD

Boards LA's may be interested in: Arts, Beach Preservation, Historic Preservation, Housing Commission, Redevelopment Oversight, Parks Recreation, Planning, Traffic Safety

**BOARDS + COMMISSIONS**

### CHULA VISTA

Boards LA's may be interested in: Board of Appeals and Advisors, Cultural Arts, Growth Management, Historic Preservation, Parks and Recreation, Planning Commission.

**BOARDS + COMMISSIONS**

### CORONADO

Boards LA's may be interested in: Cultural Arts, Design Review, Golf Course Advisory, Historic Resources, Mobility, Naval Complexes, Parks and Recreation, Planning, Spreckels Center, Street Tree, Traffic Operations Committee.

**BOARDS + COMMISSIONS**

### DEL MAR

Boards LA's may be interested in: Arts Center, Garden Club, Historical Society, Housing Corporation, Village Association, Parks, San Dieguito River Valley.

**VOLUNTEER INFORMATION**

### EL CAJON

Boards LA's may be interested in: Gillespie Field, Mission Trails, Planning.

**BOARDS + COMMISSIONS**

### ENCINITAS

Boards LA's may be interested in: Arts, Environmental, Housing Authority, Mobility and Traffic Safety, Planning.

**BOARDS + COMMISSIONS**

### ESCONDIDO

Boards LA's may be interested in: Building Advisory and Appeals, Historic Preservation, Planning, Public Art, Transportation and Community Safety.

**BOARDS + COMMISSIONS**

### IMPERIAL BEACH

Boards LA's may be interested in: Design Review, Tidelands, Parks and Recreation.

**BOARDS + COMMISSIONS**

## LA MESA

Boards LA's may be interested in: Arts and Culture, Community Parking, Design Review, Environmental Sustainability, Historic Preservation, Mobility, Planning.

**BOARDS + COMMISSIONS**

## LEMON GROVE

Boards LA's may be interested in: Community Advisory, Planning,

**CITY CLERK**

## NATIONAL CITY

Boards LA's may be interested in: Park, Recreation and Senior Services, Planning, Public Art, Sweetwater Authority, Traffic Safety, Housing.

**BOARDS + COMMISSIONS**

## OCEANSIDE

Applications are located on the Board or Commission link listed under Board of Commission.

**BOARDS + COMMISSIONS**

## POWAY

Boards LA's may be interested in: Parks and Recreation, Traffic Safety

**BOARDS + COMMISSIONS**

## SAN DIEGO

Boards LA's may be interested in: Accessibility Advisory Board, Airports, Arts and Culture, Balboa Park, Bicycle Advisory, Building Appeals, Civic San Diego, Community Forest Advisory, Consolidated Plan, Historical Resources Board, Horton Plaza Theatres, Housing Advisory and Appeals, Housing Commission, Independent Rates (Water) Oversight Committee, La Jolla Shores Planned District, Managed Competition, Mission Bay Park, Municipal Golf, Old Town Planned District, Park and Recreation, Planning, Port Commissioners, Qualcomm Stadium, Relocation Appeals, Regional Airport Authority, Sustainable Energy, Water Authority, Wetlands Advisory.

**BOARDS + COMMISSIONS**

## SAN DIEGO COUNTY

Boards LA's may be interested in: Air Pollution Control District Advisory Committee, Community Planning and Sponsor Groups (over 35 in unincorporated county), Fish and Wildlife Advisory Commission, Flood Control District, Historic Site Board, Lake Cuyamaca Recreation and Park District, Parks Advisory Committee, Planning Commission, Regional Fire Protection Committee, Resource Conservation District, Traffic Advisory Committee, Upper San Luis Rey Conservation District.

**BOARDS + COMMISSIONS**



## SAN MARCOS

Boards LA's may be interested in: Climate Action Plan, General Plan, Parks and Recreation, Planning, San Marcos Creek, Traffic Commission.

**BOARDS + COMMISSIONS**

## SANTEE

Boards LA's may be interested in: Parks and Recreation

**BOARDS + COMMISSIONS**

## SOLANA BEACH

Boards LA's may be interested in: Climate Action Commission, Parks and Recreation Commission, Public Arts Commission, View Assessment Commission.

**BOARDS + COMMISSIONS**

## VISTA

Boards LA's may be interested in: Building Board of Appeals, CDBG, Community Safety, Parks and Recreation, Planning, Public Arts, Traffic.

**BOARDS + COMMISSIONS**

There are many other non-city agencies to consider as well, such as, San Dieguito River Park Community Advisory Committee, San Diego Canyonlands Preservation Committee, BOD Nature Collective, State Parks and Recreation, Historic Preservation, Off-Highway, Boating and Waterways Commissions, Coastal Conservancy Advisory Board and many others at the state level.

# ASLA SAN DIEGO PRIORITIES SURVEY RESULTS ARE IN!



**VIEW THE FULL REPORT**

# CA COUNCIL OF ASLA LEGISLATIVE UPDATE



ABOUT THE AUTHOR  
**PHIL ARMSTRONG, ASLA**  
CCASLA DIRECTOR

**Greetings to members, practitioners, and sponsors. The last part of the year continues to usher in big changes in the legislative space.**

[The California Council of the American Society of Landscape Architects \(CCASLA\)](#) continues to be busy representing you in Sacramento each legislative session. The CCASLA board is made of two representatives from each of the four California chapters. We also rely on the very capable lobbyist team Jason Ikerd and Bridget McGowan from Edelstein Gilbert Robson & Smith, LLC (EGRS) for bill tracking and council.

Each year board leadership rotates among the four chapters, and I am very pleased to announce that **ASLA San Diego will lead the CCASLA board in the upcoming legislative session.** In fact, the San Diego region is well represented with Jon Wreschinsky as LATC chairman and Tracy Hollingworth as CCASLA's executive director. DJ Taylor (DeLorenzo Intl.) has moved into his tenure as President and State Director, and I serve as the Vice-President. This is my first year and first term, so I'm ramping up and dusting off my advocacy hat to monitor legislation and facilitate outreach.

The result of November's election has had a substantial impact to the state legislative body. The great resignation seen in the job sector has also included the state body politic. Over a quarter of the state assembly opted not to run or where termed out of office. This shift has

the Capitol legislature welcoming one of the largest freshman classes of lawmakers in recent memory. New representatives will make up over 25% of the body with Democrats continuing to expand their super-majority in Sacramento.

This fact will probably stay the political course and leave policy and legislative momentums little changed. The legislators were sworn in on December 5th, and very soon thereafter, a flurry of bills were filled before the winter recess. We are beginning to track bills and are keenly observing emerging policies that affect our industry, professions, and businesses. Recently introduced bills reflect a variety of measures dealing with climate resiliency, coastal development rules, and carbon mitigation. EGRS's staff will continue to assist CCASLA in focusing our efforts supporting and advocating for legislation affecting landscape architects in California. The new legislative session will begin in earnest when they reconvene on January 4, 2023.

With many new lawmakers in Sacramento, there was little change to the status quo in San Diego County, with one exception. District 38 State Senator and former Encinitas Mayor Catherine Blakespear replaces the termed-out Pat Bates. Senator Bates was a reliable voice supporting most of our industry causes and agenda. I'm certain building advocacy with Senator Blakespear will be a straightforward task for the chapter.

# NOW IS THE TIME TO BE SURE OUR VOICES ARE HEARD, THAT WE HAVE A SEAT AT THE DECISION TABLE, AND IN THE PROCESS EDUCATE OUR ELECTED OFFICIALS.

Nonetheless, this recent election has renewed a call to advance our professional mission and redouble our efforts cultivating grass-roots relationships. **ASLA San Diego has fostered advocacy relationships with State Assemblymember, Tasha Boerner Horvath, and Congressmen Mike Levin and Scott Peters. Encinitas Councilwoman, Joy Lyndes, FASLA is a chapter member and past Director of CCASLA.**

Beyond the coast and North County, the chapter has recognized there are other local advocates in government we need to reach out to. We need to have legislators aware of our industry and how far the breadth of our collective expertise stretches in the protection of public health, safety, and welfare.

**CCASLA and the San Diego chapter needs your help.** We need your help to continue to stress the value of landscape architects with local, state and national elected officials, and by extension, the agencies that we deal with that often create regulations that complicate or impede our ability to help our clients.

Grassroot advocacy starts in our own backyard. Building a legislative relationship starts with contacting your elected representative. I urge all members to take time to contact your State representative and member Congress to make an introduction with an email or meeting local office staffers to have our profession of landscape architecture known and understood.

Opportunities may develop through local civic or charitable organizations, political functions, town hall meetings, or by requesting a meeting. This contact can evolve quickly into relationships that permit discussion of licensure, public policy issues, and other concerns. Please know this does not need to be a solo effort. CCASLA and the Chapter are here to assist and encourage your volunteerism. Past and present board members have experience meeting with legislative staff and advocating at local, state, and federal levels to educate them regarding the wide range of areas that landscape architects practice and the value they provide society in addressing climate change and resiliency to protect our communities during droughts, fire events and other natural disasters.

Starting that first legislative relationship to facilitate understanding is the first step in building up to the 'Policy Ask' when the time is right. Our chapter has always been recognized as an innovator and we intend to meet continued challenges that arise with potential to affect our industry.

Now is the time to be sure our voices are heard, that we have a seat at the decision table, and in the process educate our elected officials. Please visit CCASLA at [cc-asla.org](http://cc-asla.org) to learn more on advocacy and identify your legislator. The Chapter will be ramping up efforts to foster new relationships and renew old acquaintances. Please contact [me](#) or [DJ Taylor](#) to lend your voice to this outreach.

# UPCOMING EVENTS & MEETINGS

## JANUARY

- 4 EXECUTIVE COMMITTEE MEETING 6PM | ONLINE



## FEBRUARY

- 1 EXECUTIVE COMMITTEE MEETING 6PM | ONLINE
- 2 ANNUAL KICK-OFF EVENT 5:30PM – 8PM THOMPSON BUILDING MATERIALS RSVP BY JANUARY 30  
RSVP
- 23 HOW TO GET APPOINTED TO LOCAL BOARDS AND COMMISSIONS WEBINAR JOY LYNDES, FASLA & RICH RISNER, ASLA ONLINE  
RSVP

## MARCH

- 1 EXECUTIVE COMMITTEE MEETING 6PM | ONLINE
- 6-31 INSTAGRAM TAKEOVER (APRIL) OPEN TO THOSE WHO SIGNED UP by 3/31
- TBA EMERGING PROFESSIONALS LARE REVIEW WITH ANGELA WOODWARD (UCLA EXTENSION) MS TEAMS  
RSVP

**CHECK OUT OUR WEBSITE** FOR ALL OUR CURRENT & UPCOMING EVENTS

ASLASD EVENTS

# SAN DIEGO CHAPTER 2022/2023 EXECUTIVE COMMITTEE

## **PRESIDENT**

**Martin Armstrong, ASLA**  
GroundLevel Landscape Architecture  
805.794.5525

## **PRESIDENT ELECT – FUNDRAISING**

**Jacqueline Higgins**  
Forever Balboa Park  
619.218.4148

## **TREASURER**

**Andrew Hatch, ASLA**  
Andrew Hatch Landscape Architect  
619.356.8522

## **SECRETARY**

**POSITION AVAILABLE! JOIN OUR BOARD!**

## **PAST PRESIDENT**

**Patricia Ferman, ASLA**  
City of Chula Vista  
619.954.5466

## **VP COMMUNITY OUTREACH**

**Difan Chen, ASLA**  
KTUA Landscape Architecture & Planning  
607.793.8866m

## **VP MEMBERSHIP**

**Yoshi Nagata**  
GroundLevel Landscape Architecture  
323.217.3015

## **VP PROGRAMS/EDUCATION**

**Kenya Huevo, ASLA**  
MIG, Inc.  
619.795.2555

## **PROGRAMS/SOCIAL CHAIR**

**Eden Bouchard**  
Kimley Horn

## **VP VISIBILITY/PUBLIC AFFAIRS**

**Ruoxi (Cisy) Cao, Associate ASLA**  
KTUA  
619.294.4477

## **CHAPTER TRUSTEE**

**Patricia Trauth**  
Rick Engineering Co.  
619.278.5656

## **CALIFORNIA COUNCIL OF ASLA**

**DJ Taylor, ASLA**  
DeLorenzo International  
858.430.6155

## **Phil Armstrong, ASLA**

The Lightfoot Planning Group  
760.692.1924

## **EMERGING PROFESSIONAL CO-CHAIRS**

**Gwen Stark, ASLA**  
KTUA  
619.294.4477

## **Fernanda Suarez, ASLA**

MIG  
619.682.3841

## **CLIMATE ACTION COMMITTEE**

**James Ryan, ASLA**  
Van Dyke Landscape Architecture  
619.294.848

## **GOLF COMMITTEE CO-CHAIRS**

**Jacqueline Higgins**  
Forever Balboa Park  
619.218.4148

## **Chris Roesink**

Hunter Industries  
760.703.2474

## **HALS**

**Amy Hoffman, ASLA**  
KTUA Landscape Architecture  
619.294.4477

## **PUBLIC SPACES ADVOCACY COMMITTEE**

**Wei Wang, ASLA**  
Van Dyke Landscape Architecture  
858.504.0392

## **EXECUTIVE DIRECTOR**

**Tracy Morgan Hollingworth**  
1050 Rosecrans St., Ste. B  
San Diego, CA 92106  
619.283.8818

## **ASLAD NEWSLETTER DESIGNER**

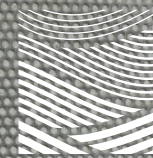
**Kari Cureton, Sarit + State Creative Studio**  
619.318.3454

# THANK YOU TO OUR 2022 SPONSORS

# T.B. PENICK & SONS, INC.



AGRI SERVICE ▶ BENCHMARK LANDSCAPE ▶ CALSENSE ▶ DAVE BANG & ASSOCIATES  
GRO-POWER INC. ▶ RCP BLOCK & BRICK ▶ SPRUCE AND GANDER



## Connect with Us



[asla-sandiego.org](http://asla-sandiego.org)

Mailing Address:  
1050 Rosecrans Street, Suite B  
San Diego, CA 92106

619.283.8818