

2020 HONOR AWARD: SEASIDE TRAILS
BY GROUNDED LANDSCAPE ARCHITECTURE

AS LA SD

DIGITAL NEWSLETTER
WINTER 2021





asla-sandiego.org

VISION

A world where the built and natural environments coexist in harmony and sustainable balance, where all peoples can express their diverse heritage and their individual desires to grow and thrive; and where we, as a profession, can substantially contribute to the process of achieving these ends.

MISSION

To lead, to educate and to participate in the careful stewardship, wise planning and artful design of our cultural and natural environments.

IN THIS ISSUE

WINTER 2021



4 Optimistic Perspective

CHRIS STEBBINS



7 CCASLA Legislative Update

JOY LYNDES, ASLA



10 In Memoriam John Pekarek

1938 - 2020



12 Emerging Professionals Update

ERIK ROWAN/GWEN STARK



17 Change to PPP Rules

TRACY MORGAN HOLLINGWORTH



18 Trustee Update

PATRICIA TRAUTH

INSTAGRAM TAKEOVER 2021 [14](#)
ENJOY 2020 VIRTUAL CHAPTER PROGRAMS [15](#)
UPCOMING EVENTS/MEETINGS [19](#)
SD CHAPTER EXECUTIVE COMMITTEE [20](#)

ASLA NATIONAL EXECUTIVE OFFICERS [21](#)
CCASLA EXECUTIVE BOARD [21](#)
YAMADA LOVE STORY [22](#)
SPONSORS [24](#)

AN OPTIMISTIC PERSPECTIVE OF 2021

While feeling very humbled and honored to be your chapter President for 2021, I will state the obvious—that these are markedly unique times to come into any position of consequence or potential influence.

My background is unique in that I identify more as an urban designer than a traditional landscape architect. Urban design is a process rather than a discipline, which resides within the intersection of landscape architecture, planning, and architecture, with a dash of engineering. When we talk about a sustained and resilient future, we are talking about ecological health, but also the quality of human habitat, which is represented by the modern city.

Of the many things we learned in the last year, 2020 clearly demonstrated that our human vitality is not only a result of our diet, exercise, and environment, but it is critically dependent on regular social connections. Urban public spaces, in the way of urban plazas, pedestrian promenades, wide sidewalks, and parklets provide local citizens with "outdoor living rooms" where opportunities for regular social connection may occur. It is in these regular connections with our neighbors, where community is built (See Jane Jacobs and many other authors on public life).



ABOUT THE AUTHOR

Christopher Stebbins

CHAPTER PRESIDENT

The practice of urban design, by its nature, sees objective weaknesses in the landscape through a different lens, and identifies opportunity. The pandemic has presented a challenge to our daily lives within cities. From the beginning, it felt like Covid-19 would diminish public space since we believed it would be an arena for the transmission of the disease. However, having settled months into this "new normal," we have all observed how regulations all over the country have allowed private dining to be extended into the street and beyond the curb into what would normally be parallel parking locations. While admittedly, some situations don't feel entirely safe, San Diegans have embraced outdoor dining and it has extended human behavior into the sidewalk and street, and therefore has elevated street life*. With the increase in human activity on the street, secondary effects like increased patronage at adjacent businesses occur as well. It is here that an opportunity presents itself.

The extension of private dining into the street has elevated street life, but we must acknowledge that it is still space designated for a private use. Therefore, the next logical step is to build on this momentum and extend public space, beyond private. Here is where we landscape architects can step in, work together with planners, and create more urban public spaces.

THE PRACTICE OF URBAN DESIGN, BY ITS NATURE, SEES OBJECTIVE WEAKNESSES IN THE LANDSCAPE THROUGH A DIFFERENT LENS, AND IDENTIFIES OPPORTUNITY.

Introducing a Unique Program for Our Chapter in 2021

For our San Diego Chapter of ASLA, we have a whole host of our regular programs and activities plus a few new endeavors in 2021. These include, but are not limited to, creating social networking events for our members, the establishment of our Climate Action Committee, hosting lectures of influential key practitioners, the return of our Annual Golf Tournament, and providing a platform for our many industry vendors to provide technical webinars to both share industry tips and stay abreast of new products.

In addition to these exciting activities, I'd like to highlight a new program for 2021 which addresses the theme of this article and capitalizes on the extension of public life, while meeting the needs of a population which hungers for social connection during this pandemic. PARK(ing) Day is an annual event each September, where organizations all over the world replace parking spaces with temporary parklets for a single full day. It's a form of tactical urbanism and a "proof of concept," which educates the public, business owners, and elected and appointed officials on the benefits of utilizing public space for human activities rather than dedication to the parking of a single automobile. It's also a brilliant way to promote the landscape architecture industry, especially if the parklets creators wish to incorporate real design intention, hardscape, and plant materials.

At the time of this writing, there is a vaccine in the early process of distribution, so we're optimistic that by September our communities will be able to safely enjoy these spaces. Many of us urban designers are also confident that the public will wish the private outdoor eating areas to stick around, post-pandemic. Therefore, imagine these temporary parklets for PARK(ing) Day, located in high-pedestrian traffic areas, adjacent to the newly established outdoor eating areas. The nexus of these two uses could create a critical mass of pedestrians and dovetail to generate a vibrant public life experience, at least for one day.

Rather than develop our own single parklet location in September, we will instead use our experience and platform as a Chapter, to advocate and educate organizations and firms throughout San Diego to initiate their own PARK(ing) Day events, at strategic locations of their choosing. Creating a sort of toolkit, we will host a training and demonstration event during Landscape Architecture month in April. Our audience will be representatives from stakeholders and organizations throughout San Diego who wish to champion their own PARK(ing) Day parklets.



AN OPTIMISTIC PERSPECTIVE OF 2021 (CONT.)

Last Words

Despite the challenging circumstances we are in, I truly look forward to this coming year. This is a message for everyone on our membership as well as practitioners in our industry, to please reach out to me and any of our board members. I personally want to be very accessible over the course of this Presidency in 2021. We value your ideas for promoting our industry, as well as events to help connect our members.

In closing, we plan on having an exciting year full of events and activities. I want to personally thank all the former Chapter Presidents for their service in this position to lead the chapter. I'd also like to thank my immediate predecessor, Brett Allen, who captured my interest in serving in this position beyond my own doubts, and showed great leadership, resolve, and positivity during what was a very challenging year in 2020. As a board, we want to extend a thank you to all our sponsors and event underwriters who make all our work possible, including the introduction of the PARK(ing) Day Advocacy Program.

(*Please note, as of the time of this writing in mid-December, California has temporarily ceased outdoor dining because of a surge of Covid-19 cases. While this was occurring, this article addresses the overall future course of public life in San Diego.)



ESP-LXIVM. Revolutionary two-wire control.

-  IVM Smart Valve eliminates decoders
-  No decoders means 50% fewer splices
-  Diagnostics provide pinpoint fault detection
- 1=5** One controller can replace five competitor models



RAIN BIRD

Get full details at rainbird.com/LXIVM



ABOUT THE AUTHOR

Joy Lyndes, FASLA

CA COUNCIL OF ASLA DIRECTOR

CCASLA LEGISLATIVE UPDATE



Advocacy at the Federal Level

ASLA conducts legislative and regulatory outreach to educate policy makers about healthy, sustainable solutions landscape architects provide to the problems facing communities. The Federal Government Affairs staff at ASLA has been working with coalition partners on funding for National Parks and public lands. This includes working with the Department of the Interior and the Administration on implementation of the Great American Outdoors Act as well as annual appropriations. ASLA signed onto a [letter to Congress](#) urging them to properly fund the National Park System for Fiscal Year 2020.

ASLA has joined with several organizations in sending a [letter to the newly-elected 117th Congress](#) urging legislators to prioritize racial diversity in their hiring, particularly among personal office top and mid-level staff. The letter asserts that ensuring racial diversity among congressional staff will enhance policy deliberation, innovation, and outcomes, and demonstrate that the experiences and skills of all Americans are vital to the policy-making process. In [recent reports](#), the Joint Center for Political and Economic Studies found that the U.S. population as a whole is almost three times more diverse than top congressional staff, with persons of color making up only 13.7 percent in the U.S. House of Representatives and only 11 percent of top Senate personal office staff. The letter is an important step in urging legislators to reverse this trend.



CCASLA LEGISLATIVE UPDATE (CONT.)

Climate Action

On October 29, the ASLA Climate Action Committee hosted a successful pilot webinar for the regional climate action conversations. Practitioners and educators from the Southeast Coastal region (NC, SC, GA, and FL) including Andy Fox, FASLA; Stephanie Kelly, ASLA; Erin Stevens, ASLA; Emily O'Mahoney, FASLA; and Alfie Vick shared policy and project case studies relevant to climate change issues impacting the region. The session is now available for [on-demand viewing](#). The next regional conversation is anticipated to be in the South Pacific Coast region with members of the San Diego Chapter participating scheduled to take place sometime soon, likely in January 2021.

Many support documents already exist including the California Adaptation Planning Guide, or APG, [Hazard Mitigation California Climate Adaptation](#) is designed to support local government, regional organizations, and climate collaborative groups to integrate best practices and current science into their adaptation planning efforts.

Our goal is to organize our Southern Pacific Coast team of chapter and university program leaders to host a regional conversation aimed at addressing climate change issues most pressing to our regions of the country. I have volunteered to sit as our Chapter Climate Change Representative, and would love to hear from you if you want to be involved.

Superstudio – to Translate the Core Goals of the Green New Deal

ASLA National and the LAF have kicked off the [Green New Deal Superstudio](#) project, a collaboration between the Landscape Architecture Foundation (LAF), the McHarg Center for Urbanism and Ecology, the Center for Resilient Cities and Landscapes, the American Society of Landscape Architects (ASLA), and the Council of Educators in Landscape Architecture to translate the core goals of the Green New Deal—decarbonization, justice, and jobs—into design and planning projects for their respective regions.

LA Programs across the country are teaching studios to add the body of knowledge in response, [here is the catalogue](#) of the studios seeking reviewers for their student work in their Superstudios for this past semester. It's a big deal for the students in these courses to have practitioner reviewers. Contact Megan Barnes, Program manager mbarnes@lafoundation.org if you would like to participate in any way with this student work around the country. I will be reviewing the Cal Poly Pomona studio presentation on 12/13, and would be glad to share my thoughts.

Feel free to contact me if you would like to get involved in our Advocacy efforts at jlyndes@coastal-sage.com



WE ARE OPEN

And here to help bring your design to life.

T.B. Penick & Sons, Inc. offers complimentary samples and has a large selection to choose from in our showroom of our decorative interior and exterior systems. If you can't make it in, we are happy to ship the samples to you whether it's to your office or residence. We also offer project specific custom samples and have a large selection of aggregate, glass, & shells to help achieve your design intent. We can also assist you with specifications and cost budgeting. Please don't hesitate to reach out to us to help bring your design to life with our complimentary artistic, design, and cost engineering support from conceptual phase to installation.

Call to schedule a visit to our showroom for an in-person consultation, while practicing social distancing guidelines.
For more information please visit www.TBPenickICS.com/ShowroomVisit

**T.B. PENICK
& SONS, INC.**

800-239-3046 x 153 | www.TBPenickICS.com

WELCOME BACK!

**FOUR SEASONS SPONSOR:
COAST RECREATION**



Interested in sponsorship opportunities
with ASLA San Diego?

[View our 2021 sponsorship package](#)



IN MEMORIAM

RON PEKAREK

1938 - 2020

Ronald Edmund Pekarek lived in variety of places throughout his life. A part of a military family he lived in Waukegan, Illinois; Norman, Oklahoma; Moab, Utah; Honolulu, Hawaii; Brainard, Nebraska; Washington, D.C; and various places in California, including, of course, San Diego. Living in Hawaii during his high school years made for some great memories.

Ron attended California Polytechnic University, Pomona, where he received his Bachelor of Science in Landscape Architecture. At Cal Poly Pomona, he worked hard to graduate with honors and first in both the Department of Environmental Design and in the School of Agriculture.

Ron started his professional career in landscape architecture in 1968 at the State of California's Department of Parks & Recreation as a Park Master Planner responsible for master plans for coastal State parks. In 1971, he moved to Caltrans where he worked on many programs including the State Scenic Highway Program. Finally, in 1973, Ron hung out his shingle and fulfilled his career dreams, establishing the landscape architecture firm, The Pekarek Group. Over the next two

decades, The Pekarek Group became one of the largest, most respected firms in the San Diego region. As the prime consultant on interdisciplinary design teams, the firm designed and oversaw construction of hundreds of major public and private projects. During this time, it was his honor to receive many design awards, including the ASLA award for design for both the Spreckels Organ Pavilion and the Harbor Drive Streetscape, as well as AIA Orchid Awards for the C Street Light Rail Transit Mall and the San Ysidro Station MTDB. Highlights in public service included serving on the City of San Diego's Architects and Engineers Consultant Selection Committee, the Mayor's Committee on Land Development Standards, the Historical Site Board, and the California State Park Director's Advisory Committee for Old Town San Diego State Historic Park.

The Pekarek Group's far-reaching impacts in San Diego include developing the Balboa Park Development and Management Plan, the Hotel del Coronado Renovation

Master Plan, San Dieguito River Study, and Master Plans for Woodglen Vista and Big Rock Parks in Santee. In addition, scores of landscape designs for custom homes and other commercial, residential, and public projects leave a legacy in the region. In his later years, Ron focused on expert witness work, teaching, and rehabilitation of aging developments.

Ron enjoyed the outdoors and traveling, especially on one of his motorcycles. He was always on the lookout for new development opportunities. He could build or fix anything...a true craftsman, continuously creating another project and sharing his knowledge and expertise. Ron's greatest joy was always his family, where he was blessed with four children, 10 grandchildren, and six great-grandchildren. With his naturally-white beard as he got older, Ron made a great Santa Claus, providing Christmas fun at holiday gatherings. Ron's pride in his family knew no bounds. From attending musical and dancing performances to supporting his loved ones at sporting events, he loved every minute.



EMERGING PROFESSIONALS UPDATE



HAPPY NEW YEAR FROM THE EMERGING PROFESSIONALS COMMITTEE (EPC)! We look forward to yet another productive year filled with opportunities for networking and professional growth on the part of our emerging professionals cohort. In the 2020 fall quarter, we focused on preparation for the Landscape Architect Registration Examination (LARE) – the national exam for licensure in the profession of landscape architecture. The main focus of these review sessions is to provide LARE candidates with the resources necessary to pass the exam in the least amount of time possible, while avoiding spending an excessive amount of money on study materials, prep courses and potentially having to retake various sections of the exam. The discussions at these events range from learning about the registration process for the exam itself, to sharing resources, knowledge and experience between EPC members. A major emphasis of the on-going LARE review session effort is to reassure candidates that they are not alone in their path toward licensure, rather, they are part of a community of peers who are on the same path and are part of a greater community within the ASLA San Diego Chapter support network.

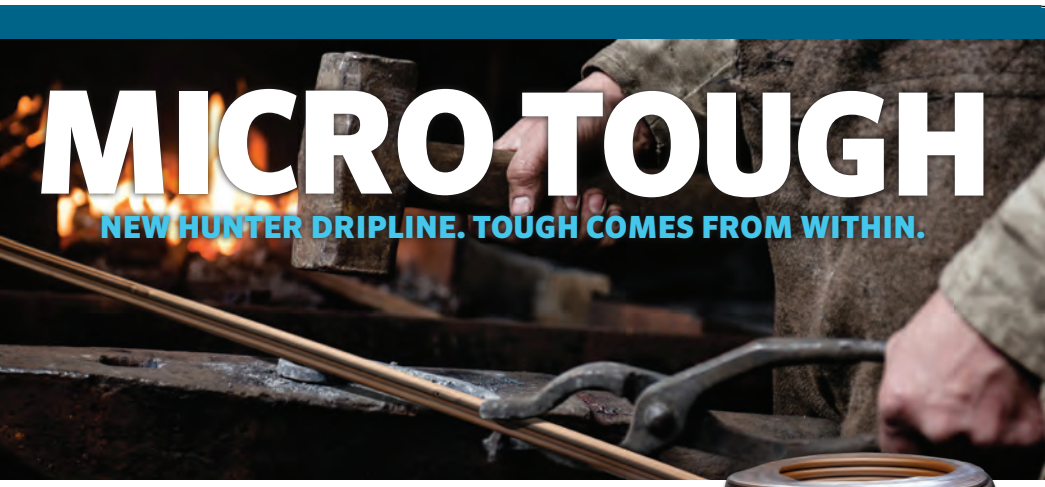
The next LARE review session will take place in early February 2021 (date/time TBD) to prepare for the next opportunity to take the LARE (the exam will be administered late March – early April). Additional upcoming events in 2021 include a portfolio and resume review/informational session led by seasoned professionals of local firms, as well as software training events geared toward CAD, Photoshop, Illustrator and SketchUp proficiency and practical application (dates and locations to be determined).

The EPC would also like to welcome Gwen Stark, who recently came on board as Committee Co-Chair. Stay current with upcoming events by visiting the EPC page on our website at <http://www.asla-sandiego.org/emerging-professionals/> and don't forget to RSVP to our bi-monthly EPC meetings by emailing Erik Rowan (erowan@rickengineering.com) or Co-Chair Gwen Stark (gwen@ktua.com). **Also, be sure to sign up for the group email blast and newsletter.**

We look forward to seeing you at our next meeting!



ABOUT THE AUTHORS
Erik Rowan
Gwen Stark



MICRO TOUGH

NEW HUNTER DRIPLINE. TOUGH COMES FROM WITHIN.

HIGH-EFFICIENCY HUNTER DRIPLINE (HDL) IS THE TOUGHEST, longest-lasting, and most cost-effective drip solution on the market. To maximize field life, HDL is made only with pre-consumer recycled resins. HDL also offers convenient color-coding and stretch-wrapping to speed up installation and field maintenance.



RESIDENTIAL & COMMERCIAL IRRIGATION | Built on Innovation®
Learn more. Visit hunterindustries.com/micro

Hunter®

reproHAUS

COMPUTER INNOVATION

TECH SERVICES

DIGITAL DEVELOPMENT

MANAGED PRINT

FACILITIES MANAGEMENT

DOCUMENT MANAGEMENT

IT SERVICES

GRAND FORMAT

SIGNAGE

3D PRINTING

BANNERS WINDOW GRAPHICS

BUILDING WRAPS WALL MURALS

FLOOR GRAPHICS TRADE SHOW

BILLBOARDS VEHICLE WRAPS

WAYFINDING

RETAIL

ADVERTISING

COMMERCIAL

CONSTRUCTION

3D SIGNAGE

DECOR

REAL ESTATE

PROTOTYPING

MODELING

CMYK FULL COLOR

HIGH DEFINITION

ENHANCED ACCURACY

PHOTO REALISTIC

ECO-FRIENDLY

FAST TURNAROUND

ORDER ONLINE: WWW.REPROHAUS.NET

Facebook: [reprohauscorp](https://www.facebook.com/reprohauscorp)
Twitter: [reprohauscorp](https://twitter.com/reprohauscorp)

BrightView Has Your Back

Plan
We partner with you in a collaborative process driven by vision, experience, and a mutual passion for extraordinary results.

Grow
Benefit from the experience of our industry leading horticultural experts and certified arborists to promote the maturity and distinction of your landscape.

Develop
Seamless project delivery that meets your client's goals and long-term expectations, on-time and on-budget.

Maintain
Consistent service delivery and proactive solutions that protect your design now and in the future.

One Partner With You At Every Step

Plan

- Cost Estimating
- Constructability Review
- Value Engineering
- Early Procurement

Grow

- 900-acre Commercial Tree Nursery
- Tree Salvage and Relocation
- Tree Preservation
- ISA Certified Arborists

Develop

- Custom Soil Blending
- Site Development
- Hardscape
- Pools and Water Features
- Irrigation and Planting

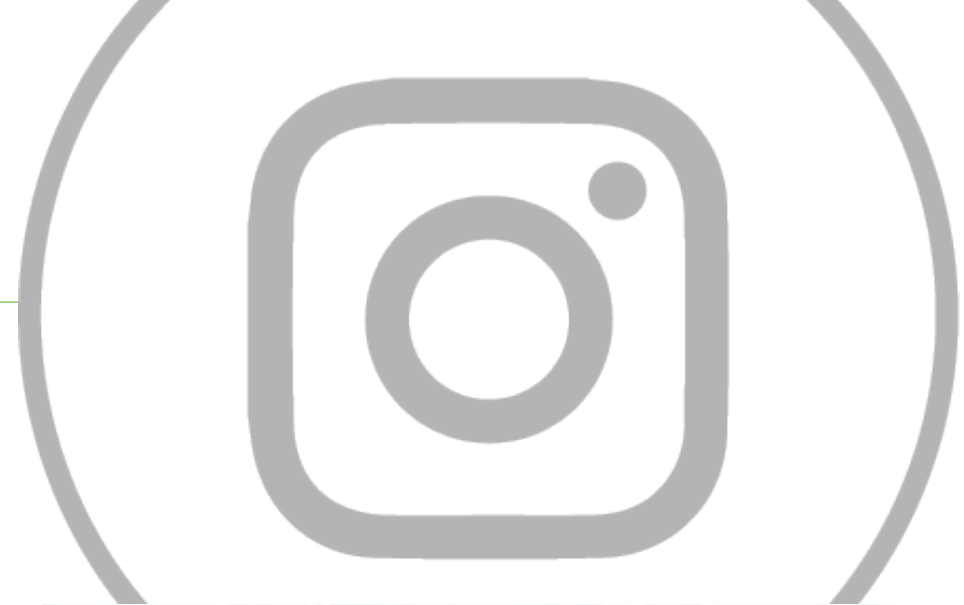
Maintain

- Horticulture
- Water Management
- Expert Tree Care
- Snow and Ice Services
- Property Enhancement

BrightView



INSTAGRAM TAKEOVER 2021 IS COMING!



The fan-favorite Instagram Takeover is returning! In celebration of World Landscape Architecture Month, we will once again hand over the reins of the ASLA-San Diego Instagram account for the month of April. It's a great opportunity for local firms to showcase their work to our 2500+ Instagram followers. Only 21 spots will be available, so watch for the official invitation from Karen Kennedy in the coming months and sign up early!

We hope that National ASLA will once again host a takeover of their Instagram account, but we will not know for another few months. If they do, and ASLA-San Diego is chosen to participate again, we will feature the work of local firms participating in our local takeover. So don't miss your chance!



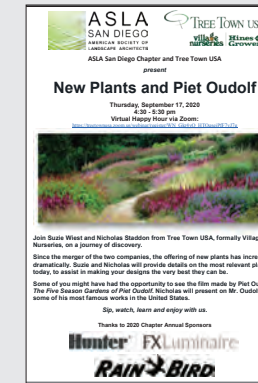
ENJOY 2020 VIRTUAL CHAPTER PROGRAMS

As we say good bye to 2020, feel free to view and hear three great programs that were held by our Chapter at the following links.

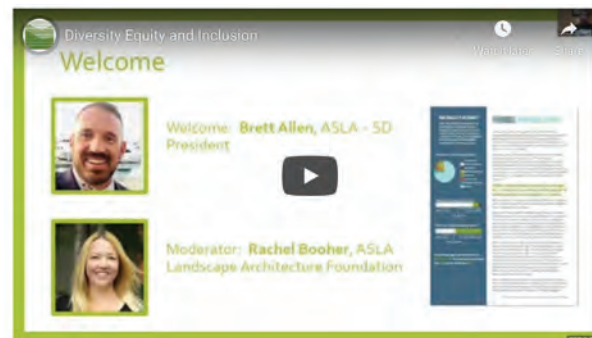
We invite Annual Sponsors to share your product and service information via video programming in 2021. Be sure to tune into the Chapter's Kickoff Event, Trivia Night, PARK(ing) Day Webinar, Lectures and other programs that are in the planning stages.

Share your program ideas with us at ASLASD@sbcglobal.net

Sponsor-hosted Webinars:



DESIGN AWARDS 7/9



Diversity Equity and Inclusion Think and Drink Webinar 9/29



Resilient Design and Climate Change Webinar 10/27



ROADMAP TO IRRIGATION SUCCESS

FREE Online Irrigation Basics Workshop

LEARN IRRIGATION DESIGN IN THIS EXCLUSIVE, **FREE** PROFESSIONAL DEVELOPMENT OPPORTUNITY

WHAT YOU'LL LEARN

Learn how to access site information, see examples of complete irrigation plans, identify components in the field, and find calculations and design references to check your work.

CLASS INFORMATION

This will be a two part class Jan 27th and 28th, 2021.

Sessions will be from 3:00PM - 5:00PM both days. Don't wait this class will fill fast! Registration deadline is Jan. 23.

WHAT YOU'LL GET

You'll earn a certificate completion and gain CEUs to build your resume. Class sizes are limited and will fill fast, so sign up now.

REGISTER TODAY!



ASLA + CHAPTERS MOBILIZE TO CHANGE PPP RULES



ABOUT THE AUTHOR

Tracy Morgan Hollingworth, CAE, MPA

ASLASD + CCASLA EXECUTIVE DIRECTOR

GREAT NEWS!

Congress has addressed the Payroll Protection Program (PPP) and tax liability in the recently-passed omnibus spending bill. ASLA national staff sent a special shout out to the Boston Chapter and California Chapters for joining ASLA in weighing in on this issue.

Below is the language from the bill that should prevent firms from paying taxes on funds from the PPP. ASLA's Government Affairs team will keep you posted when this all becomes permanent law.

"The legislation allows businesses to deduct expenses associated with their forgiven PPP loans, in addition to expanding the employee retention credit intended to prevent layoffs. It includes a two-year tax break for business meals — a priority for President Donald Trump — and rolls over a variety of temporary tax breaks known as "extenders," some for multiple years. The package also extends a payroll tax subsidy for employers offering workers paid sick leave and boosts the Earned Income Tax Credit."

Below is the language from the bill that should prevent firms from paying taxes on funds from the PPP.

"(i) TAX TREATMENT.—For purposes of the Internal Revenue Code of 1986—

"(1) no amount shall be included in the gross income of the eligible recipient by reason of forgiveness of indebtedness described in subsection (b),

"(2) no deduction shall be denied, no tax at 18 percent shall be reduced, and no basis increase shall be denied, by reason of the exclusion from gross income provided by paragraph (1), and

"(3) in the case of an eligible recipient that is a partnership or S corporation—

"(A) any amount excluded from income by reason of paragraph (1) shall be treated as tax exempt income for purposes of sections 705 and 1366 of the Internal Revenue Code of 1986, and "(B) except as provided by the Secretary of the Treasury (or the Secretary's delegate), any increase in the adjusted basis of a partner's interest in a partnership under section 705 of the Internal Revenue Code of 1986 with respect to any amount described in subparagraph (A) shall equal the partner's distributive share of deductions resulting from costs giving rise to forgiveness described in subsection (b)."

TRUSTEE UPDATE



ABOUT THE AUTHOR

Patricia Trauth

CHAPTER TRUSTEE



ReVISION ASLA 2020, our on-line conference was held November 16 through 18, and was a huge success and resulted in nearly 100 new members.

There were 2,374 paid registrants and 678 students participated. There were some positive lessons learned, particularly the expanded audience that will make our conferences in the future more inclusive and accessible.

Finding Our Future - Strategic planning activities are scheduled for next year led by ASLA President Tom Mroz. It will be an inclusive process that includes National, stakeholders, trustees, and members at large to help us determine our purpose and to help drive an organizational transformation. Stay tuned!

The ASLA Climate Action Committee is organizing teams of ASLA chapter and university program leaders to host a series of regional conversations

aimed at addressing climate change issues most pressing to our region of the country. The goal is to create a broader network of expertise and connect practitioners, educators, and students who can share resources, best practices, and policies.

We had 3,900 student members join ASLA this year! We need to get these local student members engaged in our profession and ASLA. Students are now a quarter of our membership.

The ASLA Mentorship Program has matched 177 mentors with students. This is a very worthwhile program and you can find out more about it on the ASLA National website or contact Melissa Gobrecht at mgobrecht@asla.org

Many of the ASLA Chapters don't have an Emerging Professionals Committee (EPC). This topic was discussed at great length. The San Diego Chapter is fortunate to have had a committee for several years with Erik Rowan, ASLA as Committee Chair and new EPC Committee Co-Chair, Gwen Stark. Thanks Erik and Gwen!

UPCOMING EVENTS & MEETINGS

JANUARY

- 13 EXECUTIVE COMMITTEE MEETING | 6:00PM
- 27 EXECUTIVE COMMITTEE REPORTS SENT FOR FEBRUARY BOARD AGENDA



- 27+ 28 HUNTER VIRTUAL IRRIGATION WORKSHOP 3-5PM, REGISTER BY JANUARY 23

[REGISTER](#)

FEBRUARY

- 3 EXECUTIVE COMMITTEE MEETING | 6:00PM
- 17 EMERGING PROFESSIONALS | 5PM LARE REVIEW
[REGISTER](#)
- 24 EXECUTIVE COMMITTEE REPORTS SENT FOR MARCH BOARD AGENDA
- 26 CALL FOR ENTRIES - STUDENT DESIGN AWARDS
VIRTUAL KICKOFF EVENT BOUCHARD/BORDEN COORDINATING

MARCH

- 3 EXECUTIVE COMMITTEE MEETING | 6:00PM
- 19 STUDENT DESIGN AWARDS ENTRY FORM DEADLINE
- 31 EXECUTIVE COMMITTEE REPORTS SENT FOR APRIL BOARD AGENDA

APRIL



1-30

INSTAGRAM TAKE OVER!

- 7 EXECUTIVE COMMITTEE MEETING | 6:00PM
- 9 STUDENT DESIGN AWARDS TEMPLATE ENTRY DEADLINE
- 22-24 NATIONAL ASLA TRUSTEE/CHAPTER PRESIDENTS COUNCIL SPRING MEETING
- 28 EXECUTIVE COMMITTEE REPORTS SENT FOR MAY BOARD AGENDA

TBD PARK(ing) DAY ADVOCACY & EDUCATION EVENT 5PM

[Check out our website for all our current and upcoming events >](#)

[ASLASD EVENTS](#)

SAN DIEGO CHAPTER 2020/2021 EXECUTIVE COMMITTEE

PRESIDENT

Chris Stebbins, ASLA
KTUA Landscape Architecture
619.294.4477 / urbanplazas@gmail.com

PRESIDENT ELECT – FUNDRAISING

Patricia Ferman, ASLA
City of Chula Vista
619.409.3890 / pferman@chulavistaca.gov

TREASURER

David Preciado, ASLA
Landscape Architect
619.887.0833 / dmpreciado@yahoo.com

SECRETARY

Keith Flint, ASLA
Rick Engineering
619.278.5659 / kflint@rickengineering.com

PAST PRESIDENT

Brett Allen, ASLA
Van Dyke Landscape Architects
619.294.8484 / ballen@vdlia.us

VP MEMBERSHIP

Kenya Huezo, ASLA
MIG, Inc.
619.682.3841 / khuezo@migcom.com

VP PROGRAMS/EDUCATION

Martin Armstrong, ASLA
Mark Thomas
805.794.5525 / kelpbedd@me.com

PROGRAMS/SOCIAL CO-CHAIRS

Brittany Borden
Rainbird
760.685.3718 / bborden@rainbird.com

Eden Bouchard

Kimley Horn
619.798.5659
eden.bouchard@kimley-horn.com

VP COMMUNICATIONS/VISIBILITY

Ruoxi (Cisy) Cao, Associate ASLA
KTUA
619.294.4477 / cisy@ktua.com

CHAPTER TRUSTEE

Patricia Trauth
Rick Engineering Co.
619.278.5656 / ptrauth@rickengineering.com

CALIFORNIA COUNCIL OF ASLA

Joy Lyndes, ASLA
Coastal Sage LA
760.456.7907 / jlyndes@coastal-sage.com

DJ Taylor, ASLA

DeLorenzo International
858.430.6155 / djtaylor@delorenzo-intl.com

SAN DIEGUITO RIVER PARK CITIZENS ADVISORY COMMITTEE

Richard Risner, ASLA
Grounded Landscape Architecture
760.518.7106 / rich@grounded101.com

EMERGING PROFESSIONALS COMMITTEE

Erik Rowan
Rick Engineering
619.291.0707 / erowan@rickengineering.com

Gwen Stark

KTUA
619.294.4477 / email

GOLF COMMITTEE CO-CHAIRS

Patrica Ferman, ASLA
City of Chula Vista
619.409.3890 / pferman@chulavistaca.gov

Chris Roesink

Hunter Industries
760.703.2474 / croesink@hunterindustries.com

HALS COMMITTEE CHAIR

Amy Hoffman, ASLA
KTUA Landscape Architecture
619.294.4477 / amy@ktua.com

EXECUTIVE DIRECTOR

Tracy Morgan Hollingworth
1050 Rosecrans St., Ste. B, San Diego, CA 92106
619.283.8818 / aslasd@sbcglobal.net

ASLASD NEWSLETTER DESIGNER, ADVERTISING MANAGER

Kari Cureton
Sarit + State Creative Studio
619.318.3454 / kari@saritstate.com

ASLA NATIONAL EXECUTIVE OFFICERS

PRESIDENT

Thomas L. Mroz, Jr., FASLA

PRESIDENT ELECT

Eugenia M. Martin, FASLA

IMMEDIATE PAST PRESIDENT

Wendy Miller, FASLA

VP OF COMMUNICATIONS

Jeanne Lukenda, ASLA

VP OF EDUCATION

Marq Truscott, FASLA

VP OF FINANCE

SuLin Kotowicz, ASLA

VP OF GOVERNMENT AFFAIRS

Keven Graham, FASLA

VP OF PROFESSIONAL PRACTICE

Kona Gray, FASLA

VP OF MEMBERSHIP

Dennis Nola, ASLA

CHIEF EXECUTIVE OFFICER

Torey Carter-Conneen

TREASURER

Michael D. O'Brien, Hon. ASLA

CORPORATE SECRETARY

Curt Millay, ASLA

CALIFORNIA COUNCIL OF ASLA 2020/2021 EXECUTIVE BOARD

SOUTHERN CALIFORNIA CHAPTER

Jim Pickel, ASLA (President)

714.930.6959

Jeff Chamlee, ASLA

909.484.2800

SIERRA CHAPTER

Andrew Wickham, ASLA (Treasurer)

916.287.2326

Dalton La Voie, ASLA

916.669.5913

SAN DIEGO CHAPTER

Joy Lyndes, ASLA (Secretary/Website)

760.456.7907

David Allen Taylor, ASLA

619.518.7971

NORTHERN CALIFORNIA CHAPTER

Tala Fatolahzadeh, ASLA (Govt Affairs)

408.535.8345

Ric Hendricks, ASLA

805.441.7537

STATE LOBBYIST FOR CCASLA

Donald Gillbert

Edelstein Gilbert Robson & Smith, LLC

916.443.6400

LATC RESOURCE

Jon Wreshinsky, ASLA

619.916.6956

LATC PROGRAM MANAGER

Trish Rodriguez

916.575.7231

CCASLA EXECUTIVE DIRECTOR

Tracy Morgan Hollingworth

619.283.8818

JOE AND ELIZABETH YAMADA LOVE STORY ON NPR KPBS



Liz and Joe Yamada met as kids at a WWII internment camp and spent the rest of their lives together.

They were born just two days apart and both died in May, days apart: Liz from COVID-19 and Joe from complications from dementia.

[READ MORE ON NPR](#)





JOIN US

VOLUNTEER OPPORTUNITIES

Get involved!

Volunteer on one of our committees or as part of the board! Meet other landscape architects and become part of our local landscape architecture community.



FILL OUT OUR VOLUNTEER FORM

COMMITTEES

- ✦ Communications
- ✦ Emerging Professionals
- ✦ HALS
- ✦ Residential Practitioner
- ✦ Stewardship
- ✦ Design Awards
- ✦ Golf
- ✦ San Dieguito River Park Citizens Advisory

EXECUTIVE BOARD POSITIONS

- ✦ President
- ✦ President-Elect
- ✦ Treasurer
- ✦ Secretary
- ✦ Vice President
- ✦ VP Membership
- ✦ VP Programs/Education
- ✦ VP Programs/Social
- ✦ VP Visibility/Public Affairs
- ✦ Chapter Trustee
- ✦ CCASLA Representative
- ✦ City of SD Tech Advisor
- ✦ City of SD Code Monitor

THANK YOU TO OUR 2020 SPONSORS

T.B. PENICK & SONS, INC.

modern
BUILDERS SUPPLY

BrightView  **REPROHAUS**
visualize | create | print | manage

Hunter® | FXLuminaire | **RAIN BIRD**®

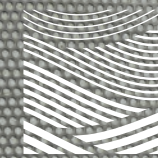
DSS  **BORAL**®  **KOMPAN**®  **MAGLIN**™
Site Furniture

PARK WEST  **TORO** **UNIQUE**
LIGHTING SYSTEMS®

AGRISERVICE  **ANOVA**  **BELGARD**® | PAVES THE WAY  **CALIFORNIA LANDSCAPE CONTRACTORS ASSOCIATION**  **GRANT+ASSOCIATES**  **JAC** 

IRONSMTIH  **MADRAX**  **THOMAS STEELE**  **SOUTHWEST**  **ROULDER & STONE**  **Stepstone, Inc.**  **The Lighting Element**  **USASHADE & Fabric Structures** 

ACKER-STONE ▶ BENCHMARK LANDSCAPE, INC. ▶ CALSENSE ▶ DAVE BANG & ASSOCIATES
FAST TILT, INC. ▶ GPH IRRIGATION PRODUCTS ▶ HAUSER SITE FURNITURE ▶ SOIL RETENTION
STREET FURNITURE AUSTRALIA ▶ THOMPSON BUILDING MATERIALS ▶ TREE TOWN/VILLAGE NURSERIES



Connect with Us



asla-sandiego.org

Mailing Address:
1050 Rosecrans Street, Suite B
San Diego, CA 92106

619.283.8818