

# AS LA SD

DIGITAL NEWSLETTER

SUMMER 2021



**2020 HONOR AWARD: SANTA YNEZ RANCH**  
BY CARSON DOUGLAS LANDSCAPE ARCHITECTURE







[asla-sandiego.org](http://asla-sandiego.org)

## VISION

A world where the built and natural environments coexist in harmony and sustainable balance, where all peoples can express their diverse heritage and their individual desires to grow and thrive; and where we, as a profession, can substantially contribute to the process of achieving these ends.

## MISSION

To lead, to educate and to participate in the careful stewardship, wise planning and artful design of our cultural and natural environments.





**4**  
**The Loss of Informal Gathering Spaces in American Cities**

CHRIS STEBBINS



**9**  
**Emerging Pros Upcoming Events**

ERIK ROWAN, ASLA  
GWEN STARK, ASLA



**10**  
**CCASLA Legislative Update**

JOY LYNDES, ASLA



**14**  
**Membership Update**

KENYA HUEZO, ASLA



**16**  
**Landscape Architecture Engagement Continues**

CISY CAO, ASLA



**24**  
**Trustee Update**

PATRICIA TRAUTH, ASLA

DESIGN AWARDS 2022 PLANNING ..... [14](#)  
JUNIPER FRONT COMMUNITY GRANT UPDATE..... [16](#)  
RAINBIRD SPONSOR HIGHLIGHT..... [18](#)  
CHAPTER EVENTS & MEETINGS..... [20](#)

ASLA NATIONAL EXECUTIVE OFFICERS ..... [22](#)  
CCASLA EXECUTIVE BOARD ..... [23](#)  
MMCITE SPONSOR HIGHLIGHT..... [25](#)  
SPONSORS ..... [26](#)

# THE LOSS OF INFORMAL GATHERING PLACES IN AMERICAN CITIES



ABOUT THE AUTHOR  
**CHRISTOPHER STEBBINS**  
CHAPTER PRESIDENT

**The verdict is in and has been for quite a while: regular social connections are a part of mental and physical health.** Great cities are not made by their freeways and parking lots, but all share a feature which are their informal gathering places. These places can host and cultivate social connections while fostering a sense of community.

Over the last several decades following World War II, American cities have experienced a marked decline in gathering places near people's homes for easy access to familiar faces--necessary to a vital informal public life. The pattern of suburban sprawl connected by wide car boulevards and freeways has encouraged people to limit their social connections to their homes, or only for planned events. Outdoor green spaces such as parks have been established, but these typically serve as refuge away from public life, not to foster a sense of community. With the adoption of the new Parks Master Plan this year, San Diego could not only increase its park spaces, but provide places that serve a direct social function, beyond passive activities that are typically associated with parks.

Sociable places include urban plazas, promenades, and wider sidewalks on streets, and succeed when located in dense, residential environments. These places contribute to a city's unique character, energy, and vitality of the city and enhance its economic prosperity. These socially-oriented public spaces also serve as the engines that build a community through informal daily social interactions.

Additionally, data unequivocally shows that people-oriented streets are more economically productive than auto-oriented streets. Well-designed public spaces specifically bring more people and potential customers to small businesses. Rather than a single car trip planned to complete a single specific errand, pedestrians spending time in public spaces are more likely to visit a store due to spontaneous curiosity.

## **Expansion of Outdoor Street Dining: A Silver-lining of the Pandemic**

The pandemic has been a defining moment in our history, and it has also revealed something that city dwellers value, and that's a stimulating public life. As

A COMMUNITY LIFE EXISTS WHEN ONE CAN GO DAILY TO A GIVEN LOCATION AT A GIVEN TIME AND SEE MANY OF THE PEOPLE ONE KNOWS. –PHILIP SLATER



15th Avenue, Gaslamp Quarter (Photographer: Bing Guan/Bloomberg)

a lifeline to restaurants, the City of San Diego and other municipalities have allowed outdoor dining areas in areas that would normally be sidewalks and parallel-parking spaces. Data shows greater consumer interest at restaurants on pedestrian-friendly “slow streets” during the pandemic.

These often-beautiful outdoor eating areas have acclimatized people to the “buzz” of outdoor street life. Street corridors such as India Street and Fifth Avenue, have been intermittently closed to vehicles for outdoor dining and walkability, and these closures have dramatically increased foot traffic in front of restaurants and other

businesses. Some cities are considering making these Covid-era traffic restrictions permanent. San Diego's Planning Department is currently outlining what would be called the “Spaces as Places” program, which would extend outdoor dining beyond the pandemic and make changes to the City's municipal code.

Outdoor dining areas are still extensions of the restaurant and are technically private. Therefore, the next logical step is to capitalize on this extension of public life and expand the public domain as well. This can be done by the creation of new permanent public spaces, or temporarily to prove their effectiveness.

### **The Annual Event known as Park(ing) Day**

Park(ing) Day is an annual, international event that encourages community organizations, design firms, artists, business owners, planners, horticulturalists, and students to transform metered parking spaces into temporary public spaces (parklets) for a single day, every 3rd Friday of September. The purpose of the parklet is to demonstrate the value of social public spaces and to create a stimulating and beautiful place for the public to visit for one day. This strategy is also known as “tactical urbanism,” a temporary experiment to test the effectiveness of a particular design proposal, and to warm the public and retail owners to ideas such as public spaces in front of their businesses.



## THE LOSS OF INFORMAL GATHERING PLACES IN AMERICAN CITIES (CONT.)

The parklet may encompass one or more adjacent parking spaces for the event and can take a wide variety of beautiful, artful, educational, or playful forms. Park(ing) Day is historically not a business venture, either internationally or locally. These are true public spaces. Typically, no vending of any kind, including food or alcohol, takes place in the parklets.

Our San Diego chapter of ASLA is planning to participate this year and design and build our own parklet, this year's event is on September 17. That said, our chapter is also promoting this county-wide, involving and educating as many organizations to establish these parklets as possible. On April 15 our chapter hosted and recorded an online webinar to provide information on the event and provide tips on establishing a successful parklet.

Each organization wishing to create a parklet will be responsible for organizing, permitting, and insuring their own parklet. Our chapter will promote all the parklets as a unified county-wide effort, with a list of all known parklets and a map on where to find them. We will also be available for consultation to help participants with aspects of developing their parklets.



## The Bigger Picture and the Future of Public Spaces in San Diego

In addition to temporary parklets and street closures, permanent public spaces will generate greater tax revenue per acre and offer a higher return on investment than auto-oriented streets. The businesses and homes fronting new public squares and plazas experience the equivalent of beach-front property and become highly desirable places to live. There are many case studies where a former street, parking area, or an empty industrial lot transforms that area of the city into an interesting, beautiful, safer, and vigorous urban community. Our best local example of this is the Piazza della Famiglia in Little Italy, a former one-block segment of West Date Street converted into an Italian-styled piazza which is now brimming with life. This was sure to succeed in that location because Little Italy is already a valuable destination for locals and tourists alike.

Urban public spaces should be in areas with sufficient residential density to support them, but more importantly for San Diego, be in under-represented communities who could best benefit from them. Public spaces can be instruments to catalyze long-term change, stimulate the local economy, provide the community with a beautiful outdoor space to informally meet, and provide easy access to familiar faces to build that vital informal public life. These do not have to be very expensive, and can be accomplished more affordably. Highly successful piazzas across cities in Italy are often just open spaces between buildings with nothing else in them other than paving, decomposed granite, or pea gravel for a floor. More features such as trees, fountains, or seat walls can be added later. It is more important that communities have a common ground, outside of their homes, outside of their jobs, that is their communal outdoor living room.

We simply need more public spaces, and landscape architects can design them.

WE SIMPLY NEED MORE PUBLIC SPACES, AND LANDSCAPE ARCHITECTS CAN DESIGN THEM.







# DESIGN AWARDS 2022 PLANNING BEGINS NOW

**If you saw the cover photo for this newsletter, you'll see how transformative landscape architecture is for our streetscapes and how what you do should be celebrated.**

**ASLA Chapter President and Design Awards Co-Chairman, Chris Stebbins, invites you to help the Chapter plan for an even bigger and better 2022 design awards competition.**

**They will hold monthly Design Awards planning meetings online and will divide the planning into four focused subcommittees – Promotion, Entries, Jury and Presentations. If you have an interest assisting on any of the subcommittees, send a quick email to [ASLASD@sbcglobal.net](mailto:ASLASD@sbcglobal.net) to help start the planning for the 2022 Design Awards.**





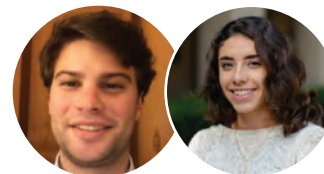
# EMERGING PROFESSIONALS UPCOMING EVENTS

**Last month we had a great 'Meet the Fellows' Event in which we heard from the Fellows in the San Diego Chapter of ASLA.** The Fellows designation is one of the highest honors within ASLA and signifies significant contributions to the profession of landscape architecture and society at-large based on completed works, knowledge, leadership, and service. This event gave our members the opportunity to hear from our FASLA members discuss anything from their professional experience and career milestones to favorite books to how they discovered the field of landscape architecture! It was an incredible experience getting to learn from the Fellows within our chapter who have had so much influence within our community and the profession of Landscape Architecture.

**We are looking forward to a resume and portfolio review event on July 28 from 5-6:30 PM.** This is a great opportunity for San Diego's emerging professionals looking to improve their portfolios as well as students looking to land their first job in the field. Anyone who wants to participate will be able to anonymously send in their portfolio and resume which will be reviewed and critiqued by one of the Principals at KTUA in a virtual meeting. Participants will receive insightful feedback on their work as well and their peers' work. They will also learn more about what employers are looking for

in candidates beginning their careers in the field of landscape architecture as well as the responsibilities of an entry-level landscape designer. More information about the details and registration for this event will be provided in the coming weeks.

**On October 13, we will host another LARE review session.** These review sessions provide LARE candidates with the resources necessary to pass the exam in the least amount of time possible, while avoiding spending an excessive amount of money on study materials, prep courses and potentially having to retake various sections of the exam. Stay current with upcoming events by visiting the EPC website at <http://www.asla-sandiego.org/emerging-professionals>, and don't forget to RSVP to our bi-monthly EPC meetings by emailing Erik Rowan ([erowan@rickengineering.com](mailto:erowan@rickengineering.com)) or Co-Chair Gwen Stark ([gwen@ktua.com](mailto:gwen@ktua.com)). Also, be sure to sign up for the group email blast and newsletter. We look forward to seeing you at our next meeting!



ABOUT THE AUTHORS  
**Erik Rowan, ASLA**  
**Gwen Stark, ASLA**

# CCASLA LEGISLATIVE UPDATE



ABOUT THE AUTHOR

**JOY LYNDES, FASLA, CCASLA**

CCASLA DIRECTOR



## WHAT'S HAPPENING IN SACRAMENTO THIS LAW-MAKING SEASON. IN THREE WORDS - BUDGET, LEADERSHIP AND BILLS.

### **Budget:**

The first deadline for State policy committees was April 30 and the number of bills that moved forward narrowed. Those bills are now being heard in the fiscal committees. The bills that have been held on the Suspense file will be heard in the next few weeks. The Governor's May budget revisions provided an additional \$76 billion in expenditures. The final budget will be passed by June 15th.

### **Leadership**

CCASLA has been working with the California Natural Resources Agency as experts to guide the development of the Governor's efforts to sequester carbon and mitigate the impacts of climate change through better land management and the 30 by 3030 conservation goal. CCASLA has provided recommendations and hosted 2 informational zoom meetings for CNRA staff on how landscape architects can help. We've recommended that a SITES requirement be adopted for all state projects. This is consistent with the [state's requirement](#) that new and renovated state buildings be LEED certified. SITES is already being used by the Cities of New York, Chicago, and Atlanta, the State of Rhode Island, and the U.S. General Services Administration. [Here is a link](#) to an academic article discussing the SITES initiative if help. We believe that any state funded projects should incentivize climate positive design in landscaping, meaning projects should be incentivized not



## CURRENTLY MONITORED BILLS

just to be carbon neutral, but to be net reducers of carbon by 2030. As such, we also recommended use of the [Climate Positive Design](#) tool which is available to help landscape architects and their clients achieve this for projects.

### If you want to know more....

The California Council of ASLA (CCASLA), which is comprised of two members from each of the four California chapters, serves our membership by monitoring legislation and the lawmaking process taking place in our State's Capitol. The CCASLA works with legislative advocates to assist in determining what position to take on Assembly Bills (AB) and Senate Bills (SB) that might have an effect on the profession of Landscape Architecture in California. Your ASLA dues go toward funding CCASLA and our lobbyists.

BILL#	SUBJECT	POSITION	STATUS
<a href="#">SB 27 (Skinner)</a>	Carbon sequestration: state goals: natural and working lands: registry of projects.	NEW	Amended: 5/20
<a href="#">AB 30 (Kalra)</a>	Parks: Access to Nature	Watch	Asm APPR 5/20
<a href="#">AB 107 (Salas)</a>	DCA: boards: temporary licenses: military spouse	Watch	Asm APPR 5/20
<a href="#">AB 225 (Gray)</a>	DCA: boards: veterans: military spouses: licenses	Watch	Asm APPR 5/24
<a href="#">AB 252 (R.Rivas)</a>	Dept of Conserv: Multibenefit Land Repurposing Prog.	Watch	Asm APPR 5/20
<a href="#">AB 284 (R.Rivas)</a>	Global Warming Solutions Act of 2006: climate goal	Watch	Asm APPR 5/20
<a href="#">AB 391 (Villapudua)</a>	Pollinator Habitat Conservation Funding	NEW	Amended: 5/24
<a href="#">AB 416 (Kalra)</a>	CA Deforestation-Free Procurement Act: Wood Products	Watch	Asm APPR 5/24
<a href="#">AB 585 (L.Rivas)</a>	Climate change:Extreme Heat&Commun Resilience Prog	Watch	Asm APPR 5/24
<a href="#">AB 697 (Chau)</a>	Forest resources: national forest lands: Good Neighbor Authority Fund: ecological restoration and fire resiliency projects.	NEW	Amended: 5/27
<a href="#">AB 646 (Low)</a>	Dept. of Consumer Affairs: boards:expunged convictions	Watch	Asm APPR 5/20
<a href="#">AB 878 (Dahle)</a>	Wildlife Resources: natural community conserv. plans	Watch	Asm APPR
<a href="#">AB 1026 (Smith)</a>	Business Licenses: Veterans	Watch	Asm APPR 5/20
<a href="#">AB 1298 (Bloom)</a>	Pesticides: 2nd Generation anticoagulant rodenticides	Watch	Asm APPR 5/19
<a href="#">AB 1384 (Gabriel)</a>	Resiliency Through Adaptation, Econ Vitality & Equity	Watch	Asm APPR 5/20
<a href="#">AB 1395 (Muratsuchi)</a>	Greenhouse gases: Carbon Neutrality	Watch	Asm APPR 5/19
<a href="#">SB 1 (Atkins)</a>	Coastal resources: sea level rise	Watch	Sen APPR 5/20
<a href="#">SB 27 (Skinner)</a>	CO2 Sequestration:State goals:Nat/working land registry	Watch	Sen APPR 5/20
<a href="#">SB 63 (Stern)</a>	Fire Prevention: Vegetation Management	Watch	Sen APPR 5/20

[VIEW CCASLA BILL TRACKING REPORT 2021](#)

## QUESTIONS?

JOY LYNDES  
[jlyndes@coastal-sage.com](mailto:jlyndes@coastal-sage.com)

DJ TAYLOR  
[dtaylor@delorenzo-intl.com](mailto:dtaylor@delorenzo-intl.com)

# JUNIPER FRONT COMMUNITY GARDEN GRANT UPDATE

The Juniper Front Community Garden made steady progress toward fulfilling the guidelines established as the ASLA Community Grant goals:

1. Demonstrating the importance of landscape architectural principles and practices in helping to conserve and enhance the natural and built landscape, promote a sustainable design, and preserve the cultural heritage of San Diego County and
2. Have the support and involvement of local citizens and groups and provide some benefit to the environment or community.

To meet these goals, we are fortunate to have the support of our dedicated community of gardeners and the creativity and full support of our ASLA member partner, Spurlock Landscape Architects, the Garden's partner in this project. They are providing design and guidance pro bono.

[READ MORE](#)

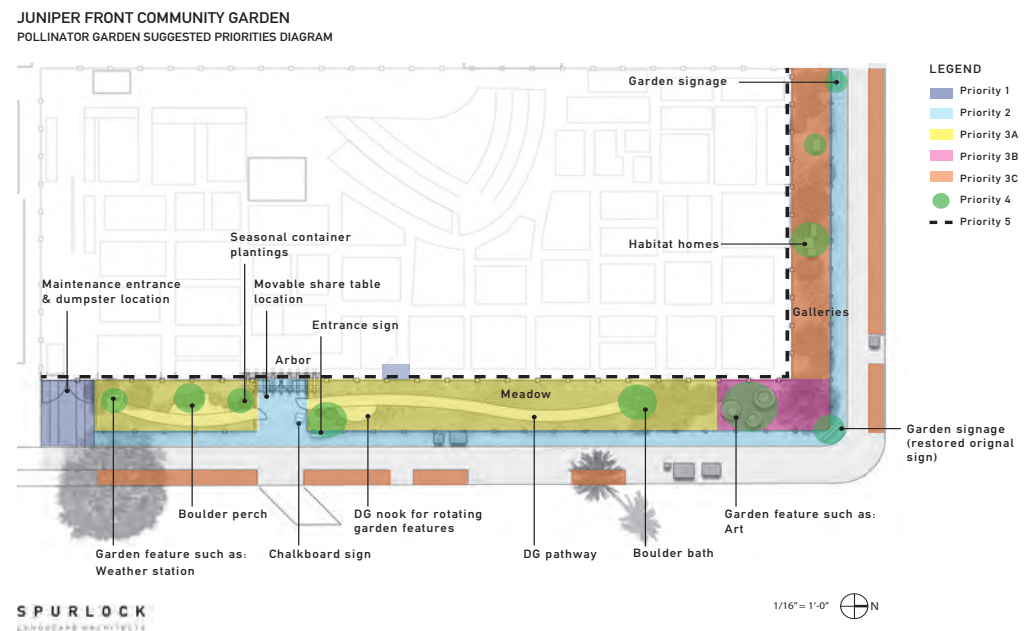
🌻 APPLICATION DEADLINE AUGUST 17TH 🌻

**2022 SAN DIEGO**

**COMMUNITY**

**GRANT PROGRAM**

<http://bit.ly/2022SDCommGrant>





JOIN US FOR THE 5TH ANNUAL

# SKETCH SAN DIEGO

FREE EVENT  
FIRST 80 TO RSVP  
BY JULY 15 WILL  
GET SKETCHING  
MATERIALS!!

SATURDAY, JULY 17; 11AM - 2PM

STONE BREWING WORLD BISTRO & GARDENS @LIBERTY STATION

WITH RICH  
RISNER OF  
GROUNDED  
LANDSCAPE  
ARCHITECTURE



Photo: JohnDurant.com  
Project: Schmidt Design Group

WE'LL SKETCH  
3 SPOTS  
AROUND  
LIBERTY  
STATION,  
THEN HEAD  
TO THE PARK  
FOR TACOS!

FIRST 80 REGISTRANTS TO RECEIVE FREE SKETCH KIT  
COURTESY OF AMY MINICILLI OF ACKER-STONE



REGISTER BY JULY 15 TO RECEIVE SKETCH KIT

[HTTP://BIT.LY/SKETCHCRAWL717](http://bit.ly/sketchcrawl717)

grounded



# MEMBERSHIP UPDATE

Wishing all of our members a healthy and happy summertime! Thanks to all of our members for your continued support of the ASLA San Diego Chapter.

## WELCOME TO OUR RETURNING MEMBERS!

Alani Aguerre, ASLA  
Patrick Cavanaugh, ASLA  
Chris Perry, Affiliate ASLA  
Timothy F. Pruss, ASLA  
Michael S. Taylor, ASLA

## MEMBERSHIP ANNIVERSARIES

Congratulations to the following members for reaching membership milestones (member anniversaries in April through June are for continuing membership).



ABOUT THE AUTHOR

**Kenya Huezo, ASLA**

VP MEMBERSHIP

## 6 - 10 YEARS

- 2015** Nathan S. Elliott, ASLA; Kathleen Therese Brand, ASLA
- 2014** Christopher L. Langdon, ASLA
- 2013** Amelia Capron, ASLA
- 2011** JGail Zerbe, ASLA

## 1 - 5 YEARS

- 2020** Benjamin Arcia, Affiliate ASLA
- 2019** Christopher W. Stebbins, ASLA; Keath William Flint, ASLA
- 2018** Sarah M. Allen, Associate ASLA; Audrey McLane, Associate ASLA; Brett Jeffrey Allen, ASLA; Karli Scott, ASLA
- 2017** Difan Chen, ASLA; Troy L. Vaughn, ASLA
- 2016** Yu-Ju Liu, ASLA



## ● 11 - 20 YEARS

**2010** Bradley C. Lenahan, ASLA; Gary Lee Ruyle, ASLA

**2009** Kevin Krenek, ASLA

**2007** Darren Jacobsen, ASLA

**2005** Alexander Nagel, ASLA; Martin S. Flores, ASLA;  
James Paul Benedetti, ASLA

**2004** Marcie Harris, ASLA; Lisa Chestnut, ASLA;  
Brad Lents, ASLA

**2002** Martin T. McPhee, Affiliate ASLA; Kathryn J. Kanaan,  
ASLA; Michael E. Nichols, FASLA

**2001** Edward Whitehouse, FASLA

## ● 21 - 30 YEARS

**1999** Martin J. Rosen, Honorary ASLA;  
Nelly M. Chung, ASLA

**1996** Bernard R. Wenzig, ASLA

**1993** Frank N. Brower, FASLA

## 31 - 40 YEARS ●

**1990** Martin Poirier, FASLA

**1988** Robin Shifflet, ASLA

**1986** Patrick W. Caughey, FASLA

**1985** Michael Lee Singleton, ASLA; Sharon A. Singleton, ASLA; Kurt William Carlson, ASLA;  
Marian Marum, ASLA

**1984** William S. Burton, FASLA

**1983** David W. Reed, ASLA; Barbara G. Gilman, ASLA

**1982** Diana Womack Biegner, ASLA

# LANDSCAPE ARCHITECTURE ENGAGEMENT CONTINUES



ABOUT THE AUTHOR

**Cisy (Ruoxi) Cao, ASLA**

VP COMMUNICATIONS/VISIBILITY

ASLA San Diego Chapter engaged with local firms to share their highlighted work through our third "Instagram Takeover Event" during April's World Landscape Architecture Month. We featured 14 firms and organizations on our local Instagram platform. Our local Chapter was also selected for the National IGTO. Our chapter's excellent local works are shared worldwide with people from all communities to celebrate "Growing Together" with fellow professionals in the nation. The IGTO made us and the public more aware of the profound and lasting connections between people and the landscape of the space landscape architects created.

Our social media platform shared the news on volunteering for events, professional lectures, community service, and stewardship to invite members to participate and learn landscape architecture professional knowledge after work and studies. We want to highlight how the spaces landscape architects create promote and facilitate people growing together and with nature. We are also excited to plan visioning events with a hybrid of virtual and in-person with diminishing health concerns later this year. We plan to hold a International Parking Day celebration September 17 in addition to San Diego Design week in September.

This year, we will continue our focus on social media such as Instagram, Facebook, Twitter, and our quarterly newsletters to share our updates on events and enhance the engagement between the local communities and individuals. Please stay tuned for our updates by following our social media accounts at the following links:





PROCEEDS SUPPORT THE ASLA-SD  
COMMUNITY GRANT PROGRAM



THANKS TO OUR  
TOURNAMENT TITLE  
SPONSOR:



PUTTING CONTEST ~ LONGEST DRIVE CONTEST ~ LUNCH ~ HAPPY HOUR ~ DINNER

THE 41ST ANNUAL

# ASLA-SD GOLF TOURNAMENT

MONDAY, OCTOBER 11, 2021  
MADERAS GOLF CLUB

VISIT [HTTPS://BPT.ME/5120153](https://bpt.me/5120153) TO REGISTER &  
LEARN ABOUT SPONSORSHIP OPPORTUNITIES

[CLICK HERE TO REGISTER](#)

[SPONSORSHIP REGISTRATION](#)

## SPONSOR HIGHLIGHT

# A HISTORY OF SOUTHERN CALIFORNIA'S FIRST IRRIGATION COMPANY

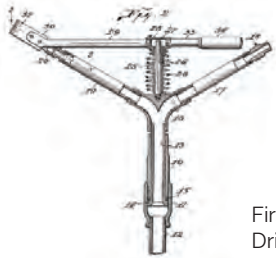
**EST. 1933 GLENDORA, CA**

**Rain Bird Corporation** is a leading global manufacturer and provider of irrigation products and services headquartered in Azusa, California. The privately held company was founded in 1933 during California's agricultural boom. Since the beginning, Rain Bird has produced and offered the industry's broadest range of irrigation products for farms, golf courses, sports arenas, commercial developments and homes in more than 130 countries around the world.

Over the past eight decades, Rain Bird has been awarded more than 450 patents worldwide, including the first in 1935 for the original horizontal action impact drive sprinkler (U.S. Patent #1,997,901) developed by a California citrus grower named Orton Englehart. Orton partnered with friends, Clem and Betty LaFetra and together they revolutionized the food production industry and ushered in a new era of water-conserving products. The original impact sprinkler was even designated a historic landmark in 1990 by the American Society of Agricultural Engineers.



Orton Englehart  
Inventor of the Impact Sprinkler



First Patent – Original Horizontal Action Impact Drive Sprinkler



The combination of Clem and Betty LaFetra together is what made the company grow. Clem was responsible for sales and Betty ran the business side. Clem LaFetra died in 1963 so there was a period for about 15 years where Betty LaFetra was running the company by herself. At that time there were not many woman running an organization with the responsibility she had. She was before her times, she knew how to win gracefully and with charm.

Rain Bird's engineering, marketing, manufacturing, and sales teams have worked together to develop innovative water-conserving products that include irrigation sprinklers, dripline, pumps, and timers/controllers. Today, we offer over 4,000 water-saving irrigation products and services with offices and manufacturing facilities in San Diego & Azusa, Ca. Arizona, Alabama, Mexico, and France.

Our commitment to The Intelligent Use of Water™ shows not only in our high-quality products, but also through our expert water management professionals who share their passion for water conservation. They provide education, training, and services for the industry and communities around us, creating long-term, responsible partnerships with our customers, vendors, and the cities in which we live. These efforts along with our high-quality products have been recognized with numerous awards throughout the years.

"Applying water to plants when they need it, in the most water efficient manner is what this company is about." – Tony LaFetra, Former CEO of Rain Bird.



Original Factory on Foothill Avenue in Glendora, CA



First Central Control System. "Maxi" - 1978

## FOR ALL YOUR WATER CONSERVATION NEEDS

**Brittany Borden**

BLA | CLIA | QWEL

Area Specification Manager -  
San Diego & Imperial County

E. [bborden@rainbird.com](mailto:bborden@rainbird.com)

C. 760.685.3718

# FUN Smart Play Designs



Smart playgrounds are compact playgrounds, packed with interactive activities, designed for kids ages 6 months to 12 years old. Smart compact play systems take kids from early crawling exploration to active climbing and social play on up to a challenging course for older children. This line helps span several critical periods of childhood development, making it ideal for childcare, early learning centers, neighborhood playgrounds and schools. Contact us today for more information.

714.619.0100 or [coastrecreation.com](http://coastrecreation.com)



## UPCOMING EVENTS & MEETINGS

### JULY

5 EXECUTIVE COMMITTEE VIRTUAL MEETING | 6PM

15 BOARD OF DIRECTORS ELECTION

17 ACKERSTONE SKETCH CRAWL - FREE EVENT  
RSVP BY JULY 15 , 11 AM TO 2 PM  
MEET AT STONE BREWERY AT LIBERTY STATION.  
FIRST 80 REGISTRANTS WILL RECEIVE A SKETCH  
BOOK AND SUPPLIES. JOIN US FOR AN AFTER  
SKETCHING PARTY AT LIBERTY STATION PARK FOR  
TACOS, BEER AND NETWORKING.

RSVP

28 EMERGING PROFESSIONALS  
RESUME/PORTFOLIO REVIEW, 5PM  
RSVP [ERIK ROWAN](#)

28 EXECUTIVE COMMITTEE REPORTS SENT FOR  
AUGUST BOARD AGENDA  
SEND AGENDA ITEMS TO [KEATH](#)



## AUGUST

- 4 EXECUTIVE COMMITTEE VIRTUAL MEETING | 6PM
- 17 COMMUNITY GRANT DEADLINE  
[MORE INFO](#)
- 19 RCP BLOCK AND BRICK - PARTY IN THE YARD WITH CLCA AND ASLA - 577 VULCAN AVE, ENCINITAS CA 92024. 5:30 PM NETWORKING, 6 PM DINNER/ PROGRAM AND 7 PM DRAWING RSVP TO [TADAMS31@COX.NET](mailto:TADAMS31@COX.NET)
- 25 EXECUTIVE COMMITTEE REPORTS SENT FOR SEPTEMBER BOARD AGENDA SEND AGENDA ITEMS TO [KEATH](#)

## SEPTEMBER

- 4 EXECUTIVE COMMITTEE MEETING/RETREAT - 11:30 - 3:30 (LOCATION TBA)
- 6 E-NEWSLETTER DEADLINE FOR OCT-DEC PROGRAMS & EVENTS SEND INFO TO [CISY@KTUA.COM](mailto:CISY@KTUA.COM)
- 17 PARK(ING) DAY CHAPTER PARKLET- LOCATION TBA - WATCH FOR UPDATE AT [WWW.ASLA-SANDIEGO.ORG/EVENTS](http://WWW.ASLA-SANDIEGO.ORG/EVENTS)
- 25 EXECUTIVE COMMITTEE REPORTS SENT FOR OCTOBER BOARD AGENDA - SEND AGENDA ITEMS TO [KEATH](#)

## OCTOBER

- 6 EXECUTIVE COMMITTEE MEETING/RETREAT - 11:30 - 3:30 (LOCATION TBA)
- 11 ANNUAL GOLF TOURNAMENT - MADERAS GOLF CLUB 10:30 REGISTRATION 12:00 SHOT GUN START  
[REGISTER](#)
- 21 EMERGING PROFESSIONALS LARE REVIEW, 5PM RSVP [ERIK ROWAN](#)
- 25 EXECUTIVE COMMITTEE REPORTS SENT FOR NOVEMBER BOARD AGENDA - SEND AGENDA ITEMS TO [KEATH](#)

CHECK OUT OUR WEBSITE FOR ALL OUR CURRENT & UPCOMING EVENTS

ASLASD EVENTS

# SAN DIEGO CHAPTER 2020/2021 EXECUTIVE COMMITTEE

## **PRESIDENT**

**Chris Stebbins, ASLA**  
KTUA Landscape Architecture  
619.294.4477 / urbanplazas@gmail.com

## **PRESIDENT ELECT – FUNDRAISING**

**Patricia Ferman, ASLA**  
City of Chula Vista  
619.409.3890 / pferman@chulavistaca.gov

## **TREASURER**

**David Preciado, ASLA**  
Landscape Architect  
619.887.0833 / dmpreciado@yahoo.com

## **SECRETARY**

**Keath Flint, ASLA**  
Rick Engineering  
619.278.5659 / kflint@rickengineering.com

## **PAST PRESIDENT**

**Brett Allen, ASLA**  
Van Dyke Landscape Architects  
619.294.8484 / ballen@vdla.us

## **VP MEMBERSHIP**

**Kenya Huezo, ASLA**  
MIG, Inc.  
619.682.3841 / khuezo@migcom.com

## **VP PROGRAMS/EDUCATION**

**Martin Armstrong, ASLA**  
Mark Thomas  
805.794.5525 / kelpbedd@me.com

## **PROGRAMS/SOCIAL CO-CHAIRS**

**Brittany Borden**  
Rainbird  
760.685.3718 / bborden@rainbird.com

## **Eden Bouchard, ASLA**

Kimley Horn  
619.798.5659  
eden.bouchard@kimley-horn.com

## **VP COMMUNICATIONS/VISIBILITY**

**Ruoxi (Cisy) Cao, Associate ASLA**  
KTUA  
619.294.4477 / cisy@ktua.com

## **CHAPTER TRUSTEE**

**Patricia Trauth, ASLA**  
Rick Engineering Co.  
619.278.5656 / ptrauth@rickengineering.com

## **CALIFORNIA COUNCIL OF ASLA**

**Joy Lyndes, FASLA**  
Coastal Sage LA  
760.456.7907 / jlyndes@coastal-sage.com

## **DJ Taylor, ASLA**

DeLorenzo International  
858.430.6155 / djtaylor@delorenzo-intl.com

## **SAN DIEGUITO RIVER PARK CITIZENS ADVISORY COMMITTEE**

**Richard Risner, ASLA**  
Grounded Landscape Architecture  
760.518.7106 / rich@grounded101.com

## **EMERGING PROFESSIONALS COMMITTEE CO-CHAIRS**

**Erik Rowan, ASLA**  
Rick Engineering  
619.291.0707 / erowan@rickengineering.com

## **Gwen Stark, ASLA**

KTUA  
619.294.4477 / email

## **GOLF COMMITTEE CO-CHAIRS**

**Patrica Ferman, ASLA**  
City of Chula Vista  
619.409.3890 / pferman@chulavistaca.gov

## **Chris Roesink**

Hunter Industries  
760.703.2474 / croesink@hunterindustries.com

## **HALS COMMITTEE CHAIR**

**Amy Hoffman, ASLA**  
KTUA Landscape Architecture  
619.294.4477 / amy@ktua.com

## **EXECUTIVE DIRECTOR**

**Tracy Morgan Hollingworth**  
1050 Rosecrans St., Ste. B, San Diego, CA 92106  
619.283.8818 / aslasd@sbcglobal.net

## **ASLASD NEWSLETTER DESIGNER, ADVERTISING MANAGER**

**Kari Cureton**  
Sarit + State Creative Studio  
619.318.3454 / kari@saritstate.com



## ASLA NATIONAL EXECUTIVE OFFICERS

### **PRESIDENT**

Thomas L. Mroz, Jr., FASLA

### **PRESIDENT ELECT**

Eugenia M. Martin, FASLA

### **IMMEDIATE PAST PRESIDENT**

Wendy Miller, FASLA

### **VP OF COMMUNICATIONS**

Jeanne Lukenda, ASLA

### **VP OF EDUCATION**

Marq Truscott, FASLA

### **VP OF FINANCE**

SuLin Kotowicz, ASLA

### **VP OF GOVERNMENT AFFAIRS**

Keven Graham, FASLA

### **VP OF PROFESSIONAL PRACTICE**

Kona Gray, FASLA

### **VP OF MEMBERSHIP**

Dennis Nola, ASLA

### **CHIEF EXECUTIVE OFFICER**

Torey Carter-Conneen

### **TREASURER**

Michael D. O'Brien, Hon. ASLA

### **CORPORATE SECRETARY**

Curt Millay, ASLA

## CALIFORNIA COUNCIL OF ASLA 2020/2021 EXECUTIVE BOARD

### **SOUTHERN CALIFORNIA CHAPTER**

Jim Pickel, ASLA (President)

714.930.6959

Jeff Chamlee, ASLA

909.484.2800

### **SIERRA CHAPTER**

Andrew Wickham, ASLA (Treasurer)

916.287.2326

Dalton La Voie, ASLA

916.669.5913

### **SAN DIEGO CHAPTER**

Joy Lyndes, FASLA (Secretary/Website)

760.456.7907

David Allen Taylor, ASLA

619.518.7971

### **NORTHERN CALIFORNIA CHAPTER**

Tala Fatolahzadeh, ASLA (Govt Affairs)

408.535.8345

Ric Hendricks, ASLA

805.441.7537

### **STATE LOBBYIST FOR CCASLA**

Donald Gillbert

Edelstein Gilbert Robson & Smith, LLC

916.443.6400

### **LATC RESOURCE**

Jon Wreschinsky, ASLA

619.916.6956

### **LATC PROGRAM MANAGER**

Trish Rodriguez

916.575.7231

### **CCASLA EXECUTIVE DIRECTOR**

Tracy Morgan Hollingworth

619.283.8818

# TRUSTEE UPDATE



ABOUT THE AUTHOR

**Patricia Trauth, ASLA**

CHAPTER TRUSTEE

The Board of Trustees spring meeting was held remotely on April 22nd through 24th. Here is an overview of what was discussed and approved:

- » The Board approved the annual audit report, reviewed member and lapsed member survey results, participated in strategic planning in particular discussed our Mission Statement, voted on recipients of ASLA honors and awards, elected two vice presidents elect – Joy Kuebler for Government Affairs and Ebru Ozer for Education.
- » The ASLA Conference on Landscape Architecture will be held in Nashville on November 19-22. The headquarters hotel is the Omni Nashville, which is across the street from the Music City Center where the conference will be held. Registration will open on June 24th.
- » Membership has surpassed 15,000, with full members making up 64% and students 27%.
- » Kevin Robert Perry, FASLA testified before the U.S. House of Representatives Committee on Transportation and Infrastructure. He discussed how landscape architects use green infrastructure to address water and stormwater management issues. This is refreshing to see our members advocating for our environment and our profession.
- » ASLA has been a member of the International Federation of Landscape Architects (IFLA) for about the past three decades, however, our involvement over the last few years has declined due to changes in IFLA leadership, and financial constraints. Under new leadership, IFLA has instituted sounder governance and financial accountability. Presidents Wendy Miller, Tom Mroz, and our CEO, Torey Carter-Conneen have had discussions with IFLA about ASLA's reengagement as a full participant in the organization. ASLA feels confident that rejoining IFLA would be a benefit to the Society as a whole. Membership in IFLA is a more strategic and cost-effective way to broaden ASLA's outreach to international audiences, and to engage globally on issues like climate change and sustainability.

MEMBERSHIP HAS  
SURPASSED 15,000,  
WITH FULL MEMBERS  
MAKING UP 64%  
AND STUDENTS 27%.



## SPONSOR HIGHLIGHT

# MMCITÉ IS A DESIGNER AND MANUFACTURER OF HIGH-QUALITY STREET FURNITURE.

We are founded upon carefully selected, proven materials, and quality design. We create with a love for public space.

Public spaces are fascinating places where people and history meet. We are proud to design for this unique setting, and we can influence everybody's taste. It is a cultural mission, and we love it. No exclusivity, genuine accessibility. Good design isn't for a gallery — it's for life.

We are not just suppliers of quality street furniture, but also a partner to anyone who wants to transform a public space into something extraordinary. We consult with architects, designers, and other decision-makers to bring their visions to life – and help make our cities more smart and beautiful.

### Anthony Imbiscuso

Business Development Manager

2905 Westinghouse Blvd

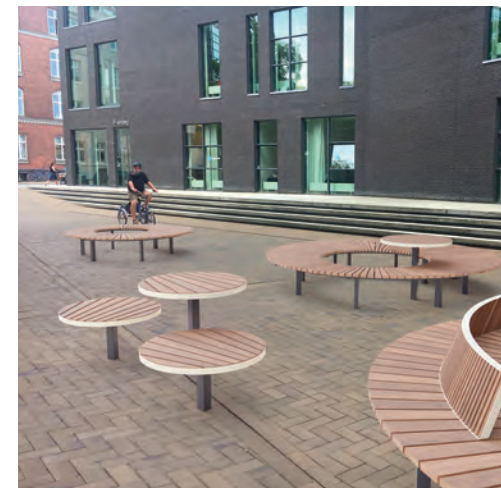
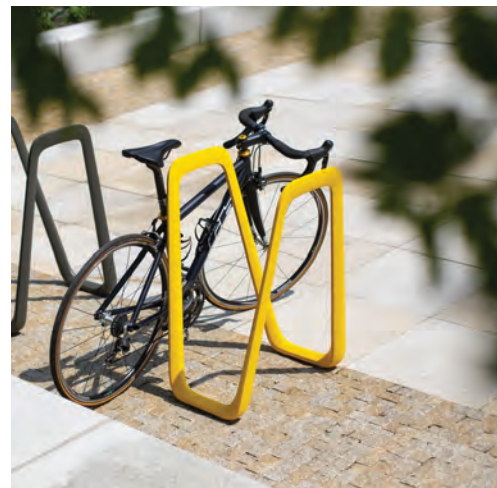
Suite 100

Charlotte, NC 28273

267-300-6995 |

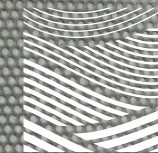
[a.imbiscuso@mmcite.com](mailto:a.imbiscuso@mmcite.com)

[www.mmcite.com/us](http://www.mmcite.com/us)



# THANK YOU TO OUR 2021 SPONSORS

# T.B. PENICK & SONS, INC.



## Connect with Us



landscapeforms®  
outdoor furniture and accessories



[asla-sandiego.org](http://asla-sandiego.org)

Mailing Address:  
1050 Rosecrans Street, Suite B  
San Diego, CA 92106

619.283.8818



AGRI SERVICE ► DAVE BANG & ASSOCIATES ► GRO-POWER INC.  
RCP BLOCK & BRICK ► THE LIGHTING ELEMENT