

AS LLA SD

DIGITAL NEWSLETTER
SPRING 2021



2020 HONOR AWARD: UCSD TATA HALL
BY SPURLOCK

The letters 'AS' in a large, white, sans-serif font, positioned at the top left of the page.A photograph of a landscaped area with large, light-colored boulders, green shrubs, and a paved path. In the background, there is a modern building with large windows and a person in a wheelchair. The scene is set under a clear blue sky.
The letters 'LA' in a large, white, sans-serif font, positioned in the middle left of the page.The letters 'SD' in a large, white, sans-serif font, positioned at the bottom left of the page.

asla-sandiego.org

VISION

A world where the built and natural environments coexist in harmony and sustainable balance, where all peoples can express their diverse heritage and their individual desires to grow and thrive; and where we, as a profession, can substantially contribute to the process of achieving these ends.

MISSION

To lead, to educate and to participate in the careful stewardship, wise planning and artful design of our cultural and natural environments.

IN THIS ISSUE

SPRING 2021



4 Optimistic Perspective

CHRIS STEBBINS



8 CCASLA Legislative Update

DJ TAYLOR, ASLA



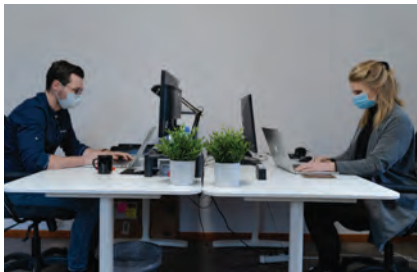
11 Get Ready to Lead the New Office Hybrid

ASAE MAGAZINE



16 Membership Update

KENYA HUEZO, ASLA



18 Predictions for the Past Pandemic Office

ASSOCIATIONSNOW.COM

WORLD LANDSCAPE ARCHITECTURE MONTH

22 2021 World Landscape Architecture Month

CISY CAO, ASLA

FREE DAY FRIDAY [14](#)
MEMBERSHIP UPDATE [16](#)
TRUSTEE UPDATE [23](#)
CHAPTER EVENTS & MEETINGS. [24](#)

ASLA NATIONAL EXECUTIVE OFFICERS [27](#)
CCASLA EXECUTIVE BOARD [27](#)
NATIONAL RESOURCES [28](#)
SPONSORS [30](#)

STATE OF OUR WORLD AND COUNTRY

What a long, strange year it has been, our city and the world continue to identify with a global pandemic which has usurped our daily lives. As of this week (week ending 3/7), San Diego County has come down from the worst spike at the beginning of January. As the three vaccines continue to be rolled out, national authorities on this subject believe we may achieve something resembling normalcy in fall of the year.

San Diego public life seems to be rising from the situation like a Phoenix from the flame. Daily public activity continues to be extended into the street, with outdoor dining areas now commonplace in front of many restaurants. Outdoor concerts in residential neighborhoods are scheduled throughout the city (including across my street from my home here in Banker's Hill!). Intermittent street closures to expand walkable areas, including 5th Avenue and India Street, has provided San Diegans the experience of what permanent pedestrian areas could feel like. The hiking trails all over the County are full every weekend, the pandemic has inspired people to regularly experience the diverse natural beauty that our County has to offer.

Our profession of landscape architecture, with our related disciplines of planning, architecture, and construction, appears to be marching forward with



ABOUT THE AUTHOR

Christopher Stebbins

CHAPTER PRESIDENT

work, where contracts have not slowed down, despite these new paradigms of doing business. Our "new normal" has fundamentally altered the way we regularly communicate, as well as coordinate projects and events. We've grown accustomed to virtual meetings, but not without fatigue from using screens and webcams. The net effect has resulted in some inefficiencies but has also provided many new opportunities that we didn't experience before. Utilizing online tools has increased public comment for project proposals, and expanding our communication tools gave us the ability to meet with practitioners in far-off places (see our growing relationship with AILA below).

It is upon these realities that our profession continues to move forward, and our Chapter is planning many events throughout this year.

50th Anniversary of International Friendship Park on the Tijuana Border

Established in 1971 at a ribbon cutting dedicated by First Lady Pat Nixon, Friendship Park is the only designated bi-national meeting point along the U.S. and Mexico border. It's a space where friends and families separated by the border wall can physically touch and talk to each other. It has become a place of connection for people on both sides for its duration, as well as location that hosted events shared simultaneously by both countries.

OUR PROFESSION OF LANDSCAPE ARCHITECTURE, WITH OUR RELATED DISCIPLINES OF PLANNING, ARCHITECTURE, AND CONSTRUCTION, APPEARS TO BE MARCHING FORWARD.

After the events of September 11, 2001, national security concerns prompted a more secure border fences at high-traffic locations such as San Diego and construction began around Friendship Park in 2008. In recent years, the park has been closed to visitors and much of it razed to make way for a new 30-foot wall, forwarded? by the previous administration. At this time construction has been paused, but the organization protecting the interests of the park, Friends of the Friendship Park, are still vigilant in their promotion of full public access and a future design of the park.

To that end, our chapter has been invited to participate in the anniversary events this year, first with a letter to the US Customs and Border Protection, to recognize the park's historic significance, to reopen to the park, and to allow unimpeded public access to this area. A recent Union-Tribune article has reported that the park may re-open this summer. Our chapter plans to promote a public design contest (<https://www.buildthatpark.org/>) and the 50th anniversary of the ribbon-cutting ceremony happening in August 2021.

Our Growing Relationship with the Australian Institute of Landscape Architects (AILA)

Through the sponsorship from and our growing relationship with the Sydney-based outdoor furniture company, Street Furniture Australia, they have their company has introduced our Chapter to the New South

Wales Chapter of AILA, the region includes the large, metropolitan capital of Sydney.

The first event by our two chapters occurred on the evening of February 25th, called the ASLA-AILA Meet Up, the topic was "Homifying Sydney Olympic Park." The intention of this webinar was to introduce a process of involving the community into co-designing a particular space, and how this applies to the developing a new vision to the original park site of the 2000 Sydney Olympics. Along with the NSW Chapter President, I was able to co-host and offer an American commentary to the conversation.

There have been some discussions among our board of having the NSW Chapter being our "sister chapter city" to with our own San Diego Chapter, and we look forward to more shared endeavors between our chapters.

Podcast Interviews on Drew Schlosberg's Spotlight on the Community Podcast

As Chapter President this year, I had the opportunity to be interviewed on the local "Spotlight on the Community" podcast, the goal of which is to "amplify the voices of social impact organizations, social entrepreneurs, local non-profits and other community champions who help shape the culture, creativity, and connectivity that drive the San Diego community to ever higher levels."



STATE OF WORLD AND COUNTRY (CONT.)

In the 30 minute segment I spoke about our chapter and the state of the landscape architecture profession during the pandemic, but also how a well-designed built environment has an effect on an urban community's health. More specifically, I took the opportunity to discuss the social nature of urban plazas, how they strengthen communities, and how they can be implemented into American cities. I also shared how the design philosophy of most U.S. cities tends to focus on the "efficiency" of automobile movement, as opposed to the social function of people. It was well received and have been invited back on the podcast on April 2nd. I'll use the time to announce the start World Landscape Architecture Month, and the lectures planned by our Chapter this year.

The current interview is available on Apple Podcasts, Spotify, or directly on their podcast web site.

Announcing our 2021 Park(ing) Day County-Wide Effort

On the evening of April 15 at 6:00 pm, we'll be hosting an online webinar to introduce all interested organizations and parties to the concept, history, and goals of the annual international event called Park(ing) Day, and offer recommendations on how to run an impactful, successful, and legal event.

The Park(ing) Day event is traditionally held during the third Friday every September. The purpose is to demonstrate how much outdoor urban space is dedicated to private vehicles, rather than open public space for people. Since its inception in 2005, the event involves a form of "tactical urbanism", to design and install a small parklet over one or more parking spaces within a street right-of-way. It is also a lot of fun. I organized my university department's submission in 2015 in Athens, Georgia, and our volunteers were students of landscape architecture, planning, and historic preservation. It replaced three parking spaces with a beautiful parklet and was incredibly successful. City staff, business owners, and the public wanted to the parklet to stay, and therefore had their minds opened to more public spaces such as these.

Closer to the date of the actual event on Friday, September 17, our Chapter will further promote all the individual parklets throughout San Diego County. The intention is to communicate this as a unified, larger effort, boosting the visibility and impact of the event.

San Diego ASLA Instagram Takeover by Local Firms

For the past two years during World Landscape Architecture Month in April, our Chapter has offered local firms the opportunity to have their work highlighted to participate in our local "Instagram Takeover." Each day, we hand over the reins of our Instagram account to a different participant. Throughout that day, they may post 6-8 profile images and unlimited stories to our account. More information about this year's Takeover is in this newsletter.



Last Words

Despite the challenging circumstances we are in, I truly look forward to this coming year. This is a message for everyone on our membership as well as practitioners in our industry, to please reach out to me and any of our board members. I personally want to be very accessible over the course of this Presidency in 2021. We value your ideas for promoting our industry, as well as events to help connect our members.

In closing, we plan on having an exciting year full of events and activities. I want to personally thank all the former Chapter Presidents for their service in this position to lead the chapter. I'd also like to thank my immediate predecessor, Brett Allen, who captured my interest in serving in this position beyond my own doubts, and showed great leadership, resolve, and positivity during what was a very challenging year in 2020. As a board, we want to extend a thank you to all our sponsors and event underwriters who make all our work possible, including the introduction of the PArk(ing) Day Advocacy Program.

(*Please note, as of the time of this writing in mid-December, California has temporarily ceased outdoor dining because of a surge of Covid-19 cases. While this was occurring, this article addresses the overall future course of public life in San Diego.)

CCASLA LEGISLATIVE UPDATE



ABOUT THE AUTHOR
DJ Taylor, ASLA
CCASLA DIRECTOR



The California Council of ASLA (CCASLA), which is comprised of two members from each of the four California chapters, serves our membership by monitoring legislation and the lawmaking process taking place in our State's Capitol. The CCASLA works with legislative advocates to assist in determining what position to take on Assembly Bills (AB) and Senate Bills (SB) that might have an effect on the profession of Landscape Architecture in California. Those positions are generally watch, oppose, or support.

Legislative Update (Jason Ikerd & Bridget McGowan, Edelstein Gilbert Robson & Smith LLC)

February 19th marked the passage of the deadline for legislators to introduce bills for the 2021 session. The Legislature struggled throughout 2020 to meet legislative deadlines. With only a few hearing rooms

large enough to allow social distancing, legislators were forced to conduct their business with fewer hearings. Hundreds of bills failed to pass given that limitation. Then at the end of session the Legislature ground to a halt as the Assembly and Senate fought with each other over their inability to move each other's priority bills fast enough.

Despite all of this, the Legislature was not very gun-shy about its workload, introducing 2300 bills. While it's true that not every introduced bill moves, this is still a daunting amount of potential work in light of the Legislature's limitations.

The Legislature will address this challenge in a few ways. Normally bills must be in print for 30 days before the Legislature takes any action on them, including hearing the bill or amending it. The Senate has waived this rule allowing them to hear bills immediately. The Assembly has yet to follow suit, but it is likely that policy committee Chairs will be given a lot

Currently Monitored Bills

of latitude to decide which bills to hear and which to let die. At the same time, the reliable rumor is that there will be an unofficial limit placed on the number of bills each Assemblymember can move out of the Assembly.

If you are interested in reading up on these bills, you can do so by visiting <https://leginfo.legislature.ca.gov/>

The next LATC meeting is scheduled for Thursday, April 29th. For more information, please visit the LATC website at www.latc.ca.gov.

BILL#	SUBJECT	POSITION	STATUS
AB 30 (Kalra)	Parks: Access to Nature	Watch	Introduced
AB 54 (Kiley)	COVID-19 emergency violation: license revocation	Watch	Introduced
AB 107 (Salas)	DCA: boards: temporary licenses: military spouse	Watch	Introduced
AB 223 (Ward)	Wildlife: Dudleya: taking and possession	Watch	Introduced
AB 225 (Gray)	DCA: boards: veterans: military spouses: licenses	Watch	Introduced
AB 252 (R.Rivas)	Dept of Conserv: Multibenefit Land Repurposing Prog.	Watch	Introduced
AB 284 (R.Rivas)	Global Warming Solutions Act of 2006: climate goal	Watch	Introduced
AB 391 (Villapudua)	Pollinator Habitat Conservation Funding	Watch	Introduced
AB 416 (Kalra)	CA Deforestation-Free Procurement Act: Wood Products	Watch	Introduced
AB 564 (Gonzalez)	Biodiversity Protection and Restoration Act	Watch	Introduced
AB 567 (Bauer-Kahan)	Pesticides: neonicotinoids: prohibited use	Watch	Introduced
AB 612 (Mayes)	Worker classification: business-to-business: Vol deposits	Watch	Introduced
AB 646 (Low)	Dept. of Consumer Affairs: boards: expunged convictions	Watch	Introduced
AB 672 (C.Garcia)	Golf Courses: Open Space and Affordable Housing	Watch	Introduced
AB 697 (C. Garcia)	Forests: Ecological Restoration and Fire Resiliency	Watch	Introduced
AB 765 (Garcia)	Public Lands: School Lands: CA Desert Conservation	Watch	Introduced
AB 878 (Dahle)	Wildlife Resources: natural community conserv. plans	Watch	Introduced
AB 902 (O'Donnel)	School Design-Build Contracts	Watch	Introduced
AB 1010 (Berman)	Architects: Continuing Education	Watch	Introduced
AB 1026 (Smith)	Business Licenses: Veterans	Watch	Introduced
AB 1030 (Chen)	Professional Land Surveyor's Act/Professional Eng's.	Watch	Introduced
AB 1298 (Bloom)	Pesticides: 2nd Generation anticoagulant rodenticides	Watch	Introduced
AB 1384 (Gabriel)	Resiliency Through Adaptation, Econ Vitality & Equity	Watch	Introduced
AB 1395 (Muratsuchi)	Greenhouse gases: Carbon Neutrality	Watch	Introduced
AB 1476 (Gray)	Park property: City of Modesto: Beard Brook Park.	Watch	Introduced
AB 1508 (Flora)	Agriculture: Orchard recycling: carbon offset credits	Watch	Introduced
SB 27 (Skinner)	CO2 Sequestration: State goals: Nat/working land registry	Watch	Introduced
SB 102 (Melendez)	COVID-19 emergency order violation: license revocation	Watch	Introduced
SB 359 (Caballero)	Climate change: natural and working lands	Watch	Introduced
SB 407 (Archuleta)	Professional Land Surveyors' Act	Watch	Introduced
SB 418 (Laird)	Sea Level Rise: Planning Data Base	Watch	Introduced
SB 604 (Hueso)	Nature/Parks Career Path/Community Resiliency Act	Watch	Introduced
SB 624 (Hueso)	Environmental Equity and Outdoor Access Act.	Watch	Introduced

QUESTIONS?

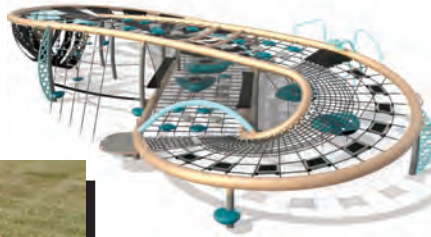


JOY LYNDES
jlyndes@coastal-sage.com



DJ TAYLOR
dtaylor@delorenzo-intl.com

EPIC NETPLAY



Quantis™ 8.1



We are Southern California's resource for high quality outdoor products – representing the finest manufacturers in the outdoor recreation industry. Whether you are looking for outdoor shade systems, site furniture, playground equipment or surfacing, we are here to help. Discover and create the products you need to realize your vision.

Contact us today for more information.
714.619.0100 or coastrecreation.com

ASLA COMMUNICATIONS REQUEST

The ASLA national membership staff has requested that you login to your profile on asla.org to verify your preferred mailing and email addresses.

Magazines and membership invoices are possibly being mailed to office locations while members are working from home.

Please also designate asla-sandiego.org and asla.org as safe domains so renewal email notifications are not being sent to junk mail.

If you cannot log onto asla.org, your membership may have lapsed. Email membership@asla.org to request their staff to update your profile and send you a renewal invoice

Thank you for your assistance so both the ASLA national and our local Chapter can serve you better.



GET READY TO LEAD THE NEW HYBRID OFFICE

ASAE Magazine

WITH VACCINATIONS ACCELERATING, MORE ASSOCIATION LEADERS MAY SOON BE MANAGING PEOPLE BOTH REMOTELY AND IN PERSON. THE SHIFT WILL DEMAND GOOD COMMUNICATION SKILLS AND ATTENTION TO FAIRNESS. ►



A year since the advent of the COVID-19 pandemic, we're starting to see the light at the end of the tunnel. People have different opinions on how bright that light is—maybe we'll be back to "normal" this summer, maybe next year—but there's no question something's flickering. Which means we're starting to have serious conversations about what the post-pandemic workplace will look like and how we'll transition into it.

HYBRID OFFICES CAN POTENTIALLY DAMAGE RELATIONSHIPS, IMPEDE EFFECTIVE COLLABORATION, AND ULTIMATELY REDUCE PERFORMANCE.

The numbers suggest that leaders still have work to do to address their employees' comfort levels. According to a survey conducted by Keystone Partners last December and released in February, substantial proportions of U.S. workers give their employers low marks for support and transparency: 36 percent say senior management doesn't "communicate concern for my well-being in both words and actions"; 37 percent haven't been offered flexible scheduling; and 39 percent say that management lacks a clear plan for moving forward after the pandemic.

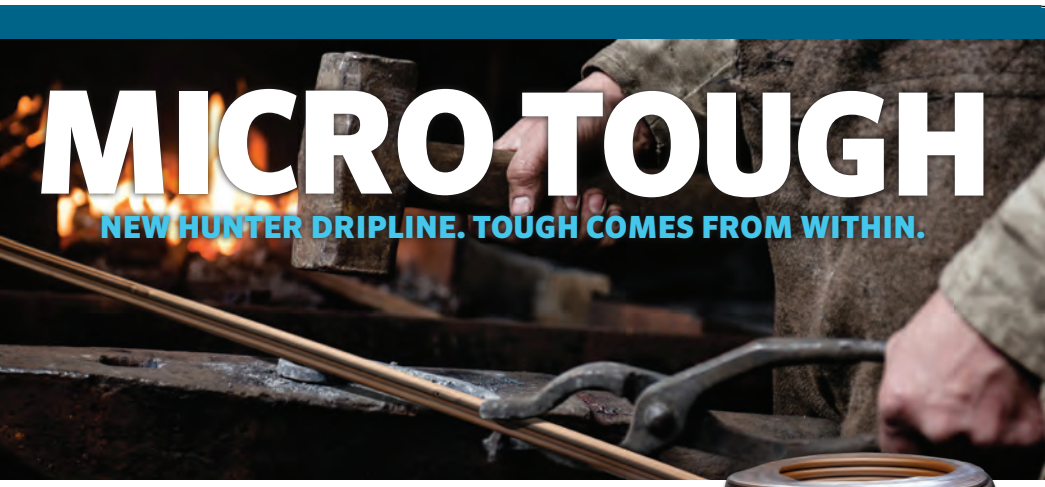
That's concerning in any context. But it's a bit more so as we enter a transitional period: As jobs are still finding

their way into arms, many associations will likely have to consider hybrid office arrangements. And without close attention, that scenario risks exacerbating the concerns raised by the Keystone Partners report.

In their Harvard Business Review article "Making the Hybrid Workplace Fair," business scholars Mark Mortensen and Martine Haas argue that having employees work both remotely and in the office has the potential to "create power differentials within teams that can damage relationships, impede effective collaboration, and ultimately reduce performance." (Add to that some of the inequities that can fester in the remote-work environment.)

Any hybrid arrangement, Mortensen and Haas write, requires leaders to monitor not just how people are treated, but how they feel they can express themselves. Leaders need to map out their office's "hybridity configuration"—knowing who's working where and when, with special attention paid to remote workers and what resources they need.

And there's an elephant in the room that needs to be acknowledged—that hybridity has plenty of potential for sowing imbalances. Leaders need to communicate the ways that the environment can make remote workers feel less seen, or unseen. Explicitly recognizing that, Mortensen and Haas write, "will increase the likelihood of employees speaking up and asking for resources when they need them, as well as their confidence that their efforts will be recognized."



MICRO TOUGH

NEW HUNTER DRIPLINE. TOUGH COMES FROM WITHIN.

HIGH-EFFICIENCY HUNTER DRIPLINE (HDL) IS THE TOUGHEST, longest-lasting, and most cost-effective drip solution on the market. To maximize field life, HDL is made only with pre-consumer recycled resins. HDL also offers convenient color-coding and stretch-wrapping to speed up installation and field maintenance.



RESIDENTIAL & COMMERCIAL IRRIGATION | Built on Innovation®
Learn more. Visit hunterindustries.com/micro



reproHAUS

COMPUTER INNOVATION

TECH SERVICES

DIGITAL DEVELOPMENT

MANAGED PRINT

FACILITIES MANAGEMENT

DOCUMENT MANAGEMENT

IT SERVICES

GRAND FORMAT

SIGNAGE

3D PRINTING

WAYFINDING

CONSTRUCTION

PROTOTYPING

MODELING

RETAIL

3D SIGNAGE

CMYK FULL COLOR

HIGH DEFINITION

ADVERTISING

DECOR

ENHANCED ACCURACY

PHOTO REALISTIC

COMMERCIAL

REAL ESTATE

ECO-FRIENDLY

FAST TURNAROUND

ORDER ONLINE: WWW.REPROHAUS.NET

Facebook icon | [reprohauscorp](https://www.facebook.com/reprohauscorp)

Twitter icon | [reprohauscorp](https://twitter.com/reprohauscorp)

BrightView Has Your Back

Plan

We partner with you in a collaborative process driven by vision, experience, and a mutual passion for extraordinary results.

Grow

Benefit from the experience of our industry leading horticultural experts and certified arborists to promote the maturity and distinction of your landscape.

Develop

Seamless project delivery that meets your client's goals and long-term expectations, on-time and on-budget.

One Partner
With You At Every Step

Maintain

Consistent service delivery and proactive solutions that protect your design now and in the future.

Plan

- Cost Estimating
- Constructability Review
- Value Engineering
- Early Procurement

Grow

- 900-acre Commercial Tree Nursery
- Tree Salvage and Relocation
- Tree Preservation
- ISA Certified Arborists

Maintain

- Horticulture
- Water Management
- Expert Tree Care
- Snow and Ice Services
- Property Enhancement

Develop

- Custom Soil Blending
- Site Development
- Hardscape
- Pools and Water Features
- Irrigation and Planting

BrightView

2021 GOLF TOURNEY TITLE SPONSOR





FREE DAY FRIDAY

AT THE WATER CONSERVATION GARDEN!

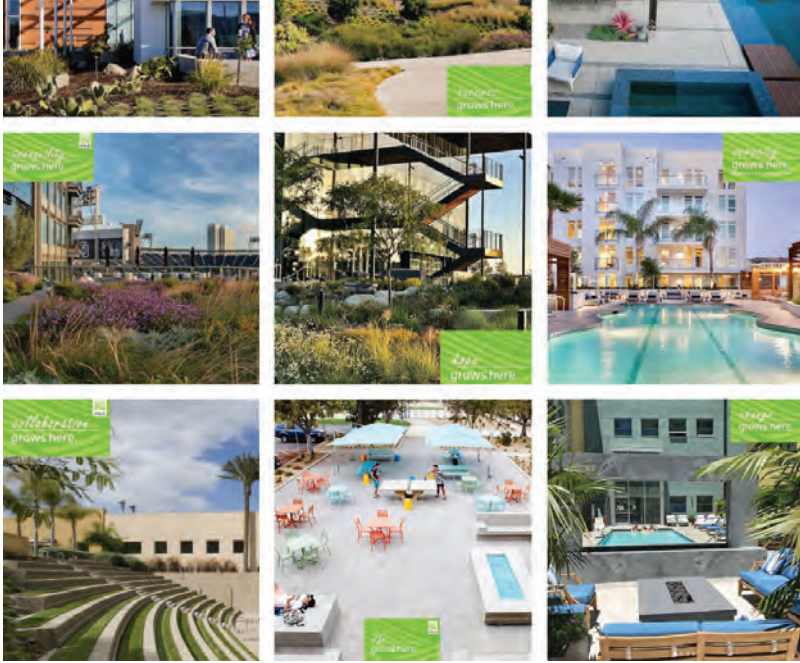
In a normal year, The Water Conservation Garden in east San Diego County provides resources and education for 88,000 children and families annually. Due to the coronavirus pandemic, meeting the Garden's mission took a little extra effort and creativity.

To remain open after its initial closure and re-opening in June 2020, the Garden now charges a small admission fee. Thanks to the new #FreeDayFriday initiative, supported by a donation match through the Rice Family Foundation, more than \$60,000 in contributions now allows the Garden to offer free admission on the second Friday of each month, which started February 12.

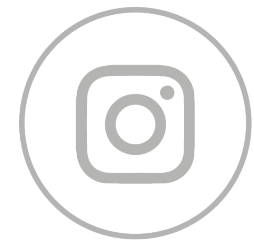
"We can now create #FreeDayFriday so every person in the community, no matter their ability to pay, can enjoy all the Garden has to offer," said Jennifer Pillsbury, Water Conservation Garden executive director and CEO.

For program updates:

<https://www.waternewsnetwork.com/water-conservation-garden-growing-strong-with-new-freedayfriday-program/>



INSTAGRAM TAKEOVER **APRIL 21**



The fan-favorite Instagram Takeover is returning! In celebration of April as World Landscape Architecture Month, we will once again hand over the reins of the ASLA-San Diego Instagram account and will feature many member projects on the ASLA national Instagram page on Wednesday, April 21.

Watch the project posts throughout April on our Instagram page @asla_sd.

MEET THE FELLOWS WEBINAR - **MAY 13**

REGISTER BY MAY 12

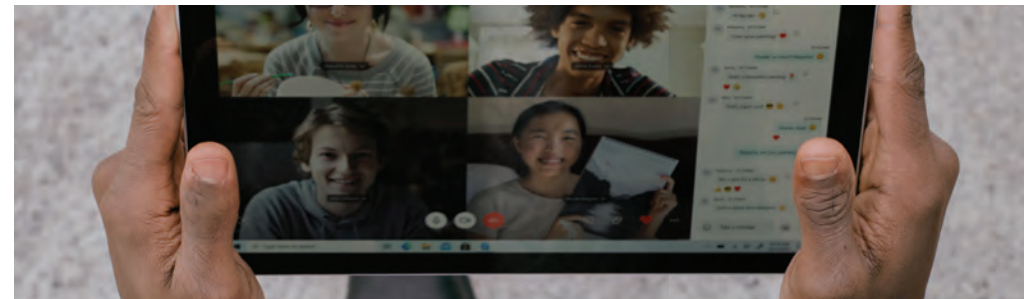
A Go to Meeting Video Link and phone information will be sent to join the meeting.

The Fellows designation is among the highest honors that ASLA confers on members to recognize significant contributions to the profession of landscape architecture and society at-large based on completed works, leadership, knowledge, and service.

On May 13 at 5:30 pm, the Emerging Professionals Committee will host an opportunity to 'Meet the Fellows', where our own FASLA members within the San Diego Chapter will speak about the profession, profile their own career milestones and experiences, and field questions/topics that arise. This is an incredible opportunity to interface with the Fellows within our Chapter who have influenced our community and profession on a truly monumental scale.

The Fellows who have confirmed for the program

include: Pat Caughey, FASLA, Kelly Broughton, FASLA, Ed DeWeese, FASLA, Vicki Estrada, FASLA, Kathleen Garcia, FASLA, Frank Kawasaki, FASLA, Joy Lyndes, FASLA, Dennis Otsuji, FASLA, Glen Schmidt, FASLA, Edward Whitehouse, FASLA



MEMBERSHIP UPDATE

After a challenging 2020, we wish all of our members and their families a healthy and prosperous 2021. As the San Diego Chapter's new VP of Membership, my goal is to connect with all of our members at some point over the next year, and to be of continued assistance regarding any questions related to membership. Thanks to all of our members for your continued support of the ASLA San Diego Chapter.

WELCOME TO OUR RETURNING MEMBERS!

Frederick Besancon, ASLA

Mary Radley, ASLA

MEMBERSHIP ANNIVERSARIES

Congratulations to the following members for reaching membership milestones (member anniversaries in January through March are for continuing membership).



ABOUT THE AUTHOR

Kenya Huezo, ASLA

VP MEMBERSHIP

6 - 10 YEARS

2015 Ryan Prange, ASLA

2014 Amy B. Hoffman, ASLA

2013 Joe Dodd, ASLA; Tom Williams, ASLA

2012 Michael Brennan, ASLA; Ian Morris, ASLA

2011 Jennifer Montgomery, ASLA

1 - 5 YEARS

2020 Jonathan Avila, ASLA; Eden Rain Bouchard, Associate ASLA; Katie Blair Hartman, ASLA; Nick Jansson, Corporate ASLA; Michael H. Spohr, ASLA

2019 Ruoxi Cao, ASLA; Mark E. Moss, ASLA; Yi Zhu, ASLA

2018 Timothy M. Henderson, ASLA; Todd M. Schechinger, ASLA; Andy Stack, ASLA; James R. Lievers, ASLA

2017 Thomas Herrera-Mishler, ASLA; Kenya Huezo, ASLA; Kathryn C. Seidenwurm, ASLA

2016 Byron Brink, ASLA; Ling Chan, ASLA; Anne-Emilie Gold, ASLA; Julianne Pineda, ASLA; Jay A. Rohrer, ASLA; Jennifer E. Webster, ASLA

● 11 - 20 YEARS

- 2010** Jacqueline Higgins, ASLA
- 2007** Jeffrey S. Smith, ASLA
- 2006** Todd Steven Pitman, ASLA; Richard Risner, ASLA
- 2005** Tracy Morgan Hollingworth, Affiliate ASLA
- 2002** David W. McCullough, ASLA; Kent A. Wilson, ASLA

● 21 - 30 YEARS

- 2000** Joel Harms, ASLA
- 1995** Joy Erin Lyndes, FASLA;
Thomas A. Picard, ASLA
- 1993** Joseph R. Esposito, ASLA

31 - 40 YEARS ●

- 1990** Lawrence J Sheehan, III, ASLA
- 1989** Douglas E. Livingston, ASLA; Martin F. Schmidt, ASLA; James Lynn Taylor, ASLA
- 1987** Maria D. Marquez, ASLA
- 1986** Deborah A Sharpe, ASLA
- 1984** Jon Becker, ASLA; Mark A. Steyaert, Jr., ASLA; Donald R. Thibedeau, ASLA
- 1980** Joseph F. Chisholm, ASLA; Richard C. Garbini, ASLA
- 1979** John R. Bardin, ASLA; Thomas W. Blessent, ASLA
- 1978** Vicky Estrada, FASLA
- 1977** Dennis Y. Otsuji, FASLA
- 1975** William J. Briggs, ASLA
- 1974** Roger DeWeese, FASLA; Stephen L. Halsey, ASLA
- 1969** Frank H. Kawasaki, FASLA

PREDICTIONS FOR THE PAST PANDEMIC OFFICE

The pandemic has brought many changes to the workplace, the most notable being more remote work. One expert says offices in the future will include a new C-suite executive focused on remote policies, more flexibility, and likely a smaller office footprint.



Having spent a year working remotely because of the pandemic, many organizations are wondering what the workplace of the near future is going to look like. One expert says remote work will still be a key component of workplaces moving forward, with many working at home and some staff in the office.

“Many organizations have been forced to carry out remote work this year as the result of the pandemic and have found that, in many instances, remote work is very successful and very effective,” said Timothy D. Golden, Ph.D, a professor of management at Rensselaer Polytechnic Institute whose research focuses on remote work, telework, telecommuting, and virtual interactions. “As we move forward, companies are beginning to consider how to institutionalize this within the way that they work on a permanent basis going forward.”

In fact, remote work is going to be so much a part of life that Golden predicts many large organizations will add a C-suite executive focused solely on remote work.

“If you think of other C-suite positions, you have a chief technology officer, a chief financial officer, a chief diversity officer,” Golden said. “These types of positions are in charge of overseeing a range of functions within the area of their responsibility, so the chief remote work officer (CRO) would be much the same. They would be in charge of effectively overseeing remote work within their organization and ensuring that it is implemented effectively and work that is carried out remotely is successful.”

While smaller organizations might not add a CRO, they still will tackle issues that would be overseen by that position, including ensuring the right technology, staff training, and culture are in place to make remote work successful.

"It's also about making sure to help managers understand how they might manage folks in office and remote workers simultaneously," Golden says. "It also includes cross-functional types of issues between departments and coordinating remote workers among them and making sure that practices and procedures are standardized across the company."

While remote work will be present, most companies will not be all remote. Golden said that research he's seen indicates that about 25 percent of employees

prefer to be in the office all the time, 25 percent prefer a completely remote environment, and that remaining half want a hybrid environment where they work two to three days from home and go into the office the other days.

"That has substantial implications for office space and real estate," Golden said. "Companies need to re-envision their real estate strategy and re-envision the purpose of the office. They have to ask themselves: Why do we need to bring people into the office every day? If the answer is that they don't need all of their employees in every day of the week, then they will not need as much office space to accommodate employees."

[READ MORE](#)



JOY LYNDES, FASLA APPOINTED TO ENCINITAS CITY COUNCIL

Joy Lyndes, FASLA, an ASLA San Diego state Director and a member of the ASLA National Licensure and State Advocacy Committee was recently selected as the newest member of the Encinitas City Council in California. Other city council members praised Joy for her communication skills, diplomacy, and dedication to local community organizations.

MORE EVENTS

WESTERN REGION CLIMATE CHANGE WEBINAR **APRIL 7 / 12PM PST**

REGISTER NOW

The ASLA Climate Action Committee is building a network of representatives from each ASLA chapter and accredited program to convene expertise on existing and predicted climate change issues most pressing for each region. **Join practitioners and educators from the Southern Pacific Coast region for a discussion on the diverse aspects of how landscape architects are addressing and planning solutions to mitigate and adapt to the effects of climate change through policy and project case studies.**

Be a part of the conversation, and share how you are making a positive change! The Climate Action Network is collecting resources for each region within these categories to share on asla.org: Advocacy, Policy, Practice, Research, and Funding.

Speakers will highlight the importance of policy and how we can be involved in making and using policy to enact change. Learn from case studies that are building resilience within communities vulnerable to wildfire, sea level rise, coastal erosion, and other climate change issues.

SPEAKERS:

- » **Pamela Conrad, ASLA**, CMG Landscape Architecture
- » **Greg Kochanowski, AIA**, RIOS
- » **Dalton LaVoie, ASLA**, Stantec Inc.
- » **Ronnie Siegel, ASLA**, Swire Siegel Landscape Architects
- » **Judith Stilgenbauer, ASLA**, University of Hawaii at Manoa
- » **DJ Taylor, ASLA**, DeLorenzo International, Inc.



An ASLA San Diego Sponsor Invites You!
Please join Stepstone for a Virtual Presentation
Wednesday, May 26th at 4:00pm



Since 1963, Stepstone, Inc. has been manufacturing high quality, precast concrete. All product lines by Stepstone, Inc. combine sophisticated, elegant detailing with high strength hard rock concrete, delivering the ideal exterior finish to your project.

We'll be featuring the following solutions from our vast product line:

- Pedestrian and Vehicular Paving Applications
- Roof and Deck Pavers
- Wall Cap and Pilaster Cap
- Pool Coping
- And Stairtreads

Including, showcasing newer products -- Diamond, Hexagonal, and False Joint Pavers and Maderastone.

Stepstone, Inc. has a ready response to the demands of your next design. And with 60-years in business customers benefit from our wealth of knowledge and experience in the precast concrete industry.

To RSVP email George@Stepstoneinc.com and enter ASLA May 26 in the subject line. The meeting link will be emailed to you the day before the presentation. For questions call George Meade at Stepstone 310 327-7474.

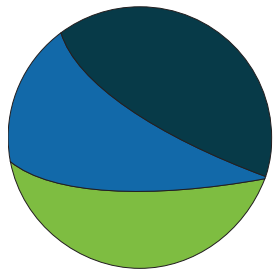


Join our webinar on June 17 at 6 pm as we discover the art of place making of Urban Plazas. The program will cover:

- » A BIT OF HISTORY of the former presence and loss of urban public spaces throughout America
- » PUBLIC LIFE STUDIES and the concept of the "Third Place"
- » The critical need for SOCIAL CONNECTION
- » Urban plazas are a MECHANISM TO BUILD COMMUNITY
- » What is an URBAN PLAZA?
- » UNIVERSAL PRINCIPLES toward creating socially optimized urban plazas
- » A SCORING TOOL to measure existing public spaces for sociability, and for developing new ones
- » REAL-WORLD examples of successful and not so successful urban plazas
- » LAST WORDS about what urban plazas can be

Urban public spaces, in the way of plazas and squares, play an essential role in the social, psychological, economic, and civic health of urban communities. These spaces also contribute to the cultural interest and vibrancy to a city. This presentation also introduces universal principles to ensure successful urban plazas, and a methodology to evaluate or create them.

REGISTER



WORLD LANDSCAPE ARCHITECTURE MONTH

April was a blooming month for raising awareness of landscape architecture, celebrating our profession, and providing community service and stewardship! In celebration of World Landscape Architecture Month (WLAM), ASLA San Diego Chapter is organizing a month-long "Instagram Takeover" to feature the work of our local firms.

For the past two years, during World Landscape Architecture Month in April, our Chapter has offered local firms the opportunity to have their work highlighted to participate in our local "Instagram Takeover." Each day, we hand over the reins of our Instagram account to a different participant. Throughout that day, the local firm can share their incredible works by posts and stories to celebrate the profession, share the firm tale and recognize the employees.

ASLA San Diego was selected for the National IGTO on April 21, and we will feature the work of local firms participating in our local takeover. IGTO will help ASLA-San Diego to improve our social media content, increase our follower base, and improve awareness about the exciting work that our members are doing in San Diego and beyond!



ABOUT THE AUTHOR

Cisy (Ruoxi) Cao, ASLA

VP COMMUNICATIONS/VISIBILITY

Follow our Instagram @ asla_sd to see local firms share the best of their work through San Diego and explore #WLAM2021 to revive your professional passion and inspiration. Take the time to advocate for your profession!



TRUSTEE UPDATE



ABOUT THE AUTHOR

Patricia Trauth

CHAPTER TRUSTEE

The Board of Trustees Winter Update was held on February 17, 2021. Here are some of the highlights of the meeting:

Mentorship Program – The national program for students was launched in February and there are now 140 successful matches. To sign up to be a mentor visit <https://connect.asla.org/mentoring>.

Financial Update – 174 exhibitors are signed up for the ASLA Conference in Nashville this fall representing 48% of ASLA National's budget.

Membership on the National Level – ASLA currently has 14,716 members. Full members make up 64% of the membership, followed by students at 27%. Students are taking advantage of the free membership bringing the total to 4,037. Emerging professional membership has declined.

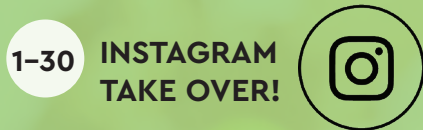
Government Affairs – ASLA worked with Congressman Anthony Brown from Maryland to introduce the Safe Routes to Schools Expansion Act, which will expand funding for active transportation and infrastructure improvements. These are the type of projects we, as landscape architects advocate including traffic calming, sidewalk improvements and bicycle crossings.

ASLA teamed with the Cultural Landscape Foundation to advocate for the protection and preservation of the former Weyerhaeuser Corporate Headquarters. This iconic corporate property designed in 1971 by SWA is under attack. The current owner is planning to clear-cut 132 forested acres to build a 1.5 million square-foot warehouse. The Washington Chapter has also weighed in on this issue to prevent the clearcutting of the campus.

Mississippi is one of four states nationwide who prohibit landscape architects from having ownership in multi-disciplinary design firms. ASLA supported the Mississippi Chapter in submitting a comment letter to House Speaker Phillip Gunn advocating for the passage of House Bill 1314, which would permit landscape architects to have such ownership. I was shocked to find this out! As an equity partner of RICK Engineering, I would be classified as participating in illegal activity if I lived in Mississippi! I will keep you posted on this issue.

UPCOMING EVENTS & MEETINGS

APRIL: WORLD LANDSCAPE ARCHITECTURE MONTH!



7 EXECUTIVE COMMITTEE VIRTUAL MEETING | 6PM

7 ONLINE WEBINAR: PLAYGROUNDS WITH ULTIMATE ARCHITECTURAL FREEDOM BASED ON COROCORD 10AM | KOMPAN

REGISTER

7 ONLINE WEBINAR: ASLA NATIONAL WESTERN REGION CLIMATE CHANGE 12PM

ZOOM LINK

14 ONLINE WEBINAR: NATURAL PLAYGROUNDS: WHAT TO CONSIDER IN DESIGN 10AM | KOMPAN

REGISTER

15 PARK(ing) DAY ADVOCACY & EDUCATION EVENT 5PM

REGISTER

21 HALS MEETING | 5PM RSVP AMY HOFFMAN

RSVP AMY

22 ONLINE WEBINAR: ARBOR DAY | 4PM

REGISTER

22-24 NATIONAL ASLA TRUSTEE/ CHAPTER PRESIDENTS COUNCIL SPRING MEETING

28 EXECUTIVE COMMITTEE REPORTS SENT FOR MAY BOARD AGENDA

30 ARBOR DAY TREE PLANTING EVENT – FOR TIME/LOCATION CONTACT:

MARTY ARMSTRONG

MAY

- 5 EXECUTIVE COMMITTEE VIRTUAL MEETING | 6PM
- 13 MEET THE FELLOWS VIRTUAL HAPPY HOUR | 530PM
[REGISTER](#)
- 26 STEPSTONE WEBINAR | 4PM PRODUCTS & SERVICES
RSVP/EMAIL GEORGE MEADE:
[RSVP](#)
- 26 EXECUTIVE COMMITTEE REPORTS SENT FOR JUNE BOARD AGENDA

JUNE

- 1 COMMUNITY GRANT MAILING SHARE APPLICATION WITH COMMUNITY ORGANIZATIONS
[INFO](#)
- 5 EXECUTIVE COMMITTEE VIRTUAL MEETING | 6PM
- 17 LECTURE: THE NEED FOR SOCIALLY VIBRANT URBAN PLAZAS AND METHODS TO CREATE THEM | 6PM
[RSVP](#)
- 30 EXECUTIVE COMMITTEE REPORTS SENT FOR JULY BOARD AGENDA

CHECK OUT OUR WEBSITE FOR ALL OUR CURRENT & UPCOMING EVENTS

[ASLASD EVENTS](#)

SAN DIEGO CHAPTER 2020/2021 EXECUTIVE COMMITTEE

PRESIDENT

Chris Stebbins, ASLA
KTUA Landscape Architecture
619.294.4477 / urbanplazas@gmail.com

PRESIDENT ELECT – FUNDRAISING

Patricia Ferman, ASLA
City of Chula Vista
619.409.3890 / pferman@chulavistaca.gov

TREASURER

David Preciado, ASLA
Landscape Architect
619.887.0833 / dmpreciado@yahoo.com

SECRETARY

Keith Flint, ASLA
Rick Engineering
619.278.5659 / kflint@rickengineering.com

PAST PRESIDENT

Brett Allen, ASLA
Van Dyke Landscape Architects
619.294.8484 / ballen@vdl.com

VP MEMBERSHIP

Kenya Huezo, ASLA
MIG, Inc.
619.682.3841 / khuezo@migcom.com

VP PROGRAMS/EDUCATION

Martin Armstrong, ASLA
Mark Thomas
805.794.5525 / kelpbedd@me.com

PROGRAMS/SOCIAL CO-CHAIRS

Brittany Borden
Rainbird
760.685.3718 / bborden@rainbird.com

Eden Bouchard

Kimley Horn
619.798.5659
eden.bouchard@kimley-horn.com

VP COMMUNICATIONS/VISIBILITY

Ruoxi (Cisy) Cao, Associate ASLA
KTUA
619.294.4477 / cisy@ktua.com

CHAPTER TRUSTEE

Patricia Trauth
Rick Engineering Co.
619.278.5656 / ptrauth@rickengineering.com

CALIFORNIA COUNCIL OF ASLA

Joy Lyndes, ASLA
Coastal Sage LA
760.456.7907 / jlyndes@coastal-sage.com

DJ Taylor, ASLA

DeLorenzo International
858.430.6155 / djtaylor@delorenzo-intl.com

SAN DIEGUITO RIVER PARK CITIZENS ADVISORY COMMITTEE

Richard Risner, ASLA
Grounded Landscape Architecture
760.518.7106 / rich@grounded101.com

EMERGING PROFESSIONALS COMMITTEE

Erik Rowan
Rick Engineering
619.291.0707 / erowan@rickengineering.com

Gwen Stark

KTUA
619.294.4477 / email

GOLF COMMITTEE CO-CHAIRS

Patrica Ferman, ASLA
City of Chula Vista
619.409.3890 / pferman@chulavistaca.gov

Chris Roesink

Hunter Industries
760.703.2474 / croesink@hunterindustries.com

HALS COMMITTEE CHAIR

Amy Hoffman, ASLA
KTUA Landscape Architecture
619.294.4477 / amy@ktua.com

EXECUTIVE DIRECTOR

Tracy Morgan Hollingworth
1050 Rosecrans St., Ste. B, San Diego, CA 92106
619.283.8818 / aslasd@sbcglobal.net

ASLASD NEWSLETTER DESIGNER, ADVERTISING MANAGER

Kari Cureton
Sarit + State Creative Studio
619.318.3454 / kari@saritstate.com

ASLA NATIONAL EXECUTIVE OFFICERS

PRESIDENT

Thomas L. Mroz, Jr., FASLA

PRESIDENT ELECT

Eugenia M. Martin, FASLA

IMMEDIATE PAST PRESIDENT

Wendy Miller, FASLA

VP OF COMMUNICATIONS

Jeanne Lukenda, ASLA

VP OF EDUCATION

Marq Truscott, FASLA

VP OF FINANCE

SuLin Kotowicz, ASLA

VP OF GOVERNMENT AFFAIRS

Keven Graham, FASLA

VP OF PROFESSIONAL PRACTICE

Kona Gray, FASLA

VP OF MEMBERSHIP

Dennis Nola, ASLA

CHIEF EXECUTIVE OFFICER

Torey Carter-Conneen

TREASURER

Michael D. O'Brien, Hon. ASLA

CORPORATE SECRETARY

Curt Millay, ASLA

CALIFORNIA COUNCIL OF ASLA 2020/2021 EXECUTIVE BOARD

SOUTHERN CALIFORNIA CHAPTER

Jim Pickel, ASLA (President)

714.930.6959

Jeff Chamlee, ASLA

909.484.2800

SIERRA CHAPTER

Andrew Wickham, ASLA (Treasurer)

916.287.2326

Dalton La Voie, ASLA

916.669.5913

SAN DIEGO CHAPTER

Joy Lyndes, ASLA (Secretary/Website)

760.456.7907

David Allen Taylor, ASLA

619.518.7971

NORTHERN CALIFORNIA CHAPTER

Tala Fatolahzadeh, ASLA (Govt Affairs)

408.535.8345

Ric Hendricks, ASLA

805.441.7537

STATE LOBBYIST FOR CCASLA

Donald Gillbert

Edelstein Gilbert Robson & Smith, LLC

916.443.6400

LATC RESOURCE

Jon Wreshinsky, ASLA

619.916.6956

LATC PROGRAM MANAGER

Trish Rodriguez

916.575.7231

CCASLA EXECUTIVE DIRECTOR

Tracy Morgan Hollingworth

619.283.8818

ASLA NATIONAL RESOURCES

ASLA BUSINESS IMPACT SNAPSHOT – HOW LANDSCAPE ARCHITECTURE PRACTICES ARE DEALING WITH COVID-19

ASLA released the results of a recent member survey exploring the business impacts of COVID-19 and insights into how businesses are responding to the crisis. Download the [ASLA COVID-19 Business Impact Snapshot PowerPoint](#).

CONTRACT PERFORMANCE WEBINAR

In May 2020, ASLA hosted COVID-19 and Contract Performance, a webinar on how COVID-19 may be affecting current projects for landscape architects working under existing contracts. The speakers specifically addressed the 2020 ASLA Standard Form Contract for Professional Services between Landscape Architect and Client, including key issues that have emerged during the crisis and that parties need to consider in light of COVID-19. The recorded webinar is now available through the ASLA Business Toolkit.

WEBINAR



STUDENT FREE MEMBERSHIP

Landscape architecture students continue to take advantage of ASLA's free membership offer, bringing the total to 4,320 student, student affiliate, and international student members. Students now make up more than a quarter of the entire membership. Students can complete an application using a simple survey process, with more information found on the [ASLA students webpage](#).



JOIN US

VOLUNTEER OPPORTUNITIES

Get involved!

Volunteer on one of our committees or as part of the board! Meet other landscape architects and become part of our local landscape architecture community.



leadership
grows here.

Interested in strengthening your leadership potential and being involved with the ASLA San Diego Chapter Board or a committee?

Join us and other up-and-coming leaders in making a positive impact on your career and help build business for your firm.

To be submitted to the Nominations Committee, please download/complete the nominations form using the links below and submit to us at ASLASD@sbcglobal.net by Tuesday, June 1, 2021.

[BOD NOMINATION FORM](#)

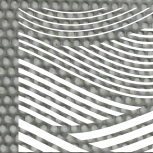
[VOLUNTEER FORM](#)

THANK YOU TO OUR 2021 SPONSORS

T.B. PENICK & SONS, INC.



CALSENSE ▶ DAVE BANG & ASSOCIATES ▶ GRO-POWER INC.
RCP BLOCK & BRICK ▶ SOIL RETENTION ▶ THE LIGHTING ELEMENT



Connect with Us



asla-sandiego.org

Mailing Address:
1050 Rosecrans Street, Suite B
San Diego, CA 92106

619.283.8818