

Resilient Design & Climate Change

featuring



Rep. Scot Peters (CA-52)
Author of "Climate Playbook"



Wendy Miller, FASLA
2020 ASLA President

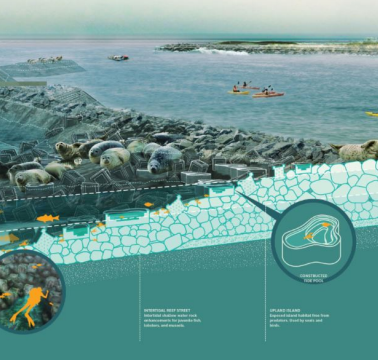


Pamela Conrad
LAF Fellow & Founder of
Climate Positive Design



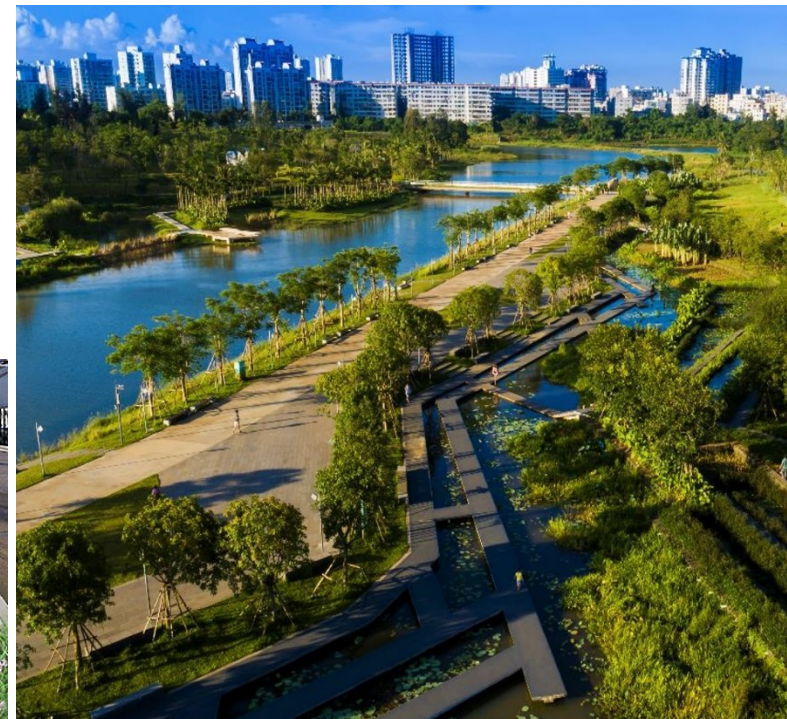
with **Roger Showley**
moderating

Presented by ASI A and San Diego Chapter of ASI A



ASLA: Green Since 1899

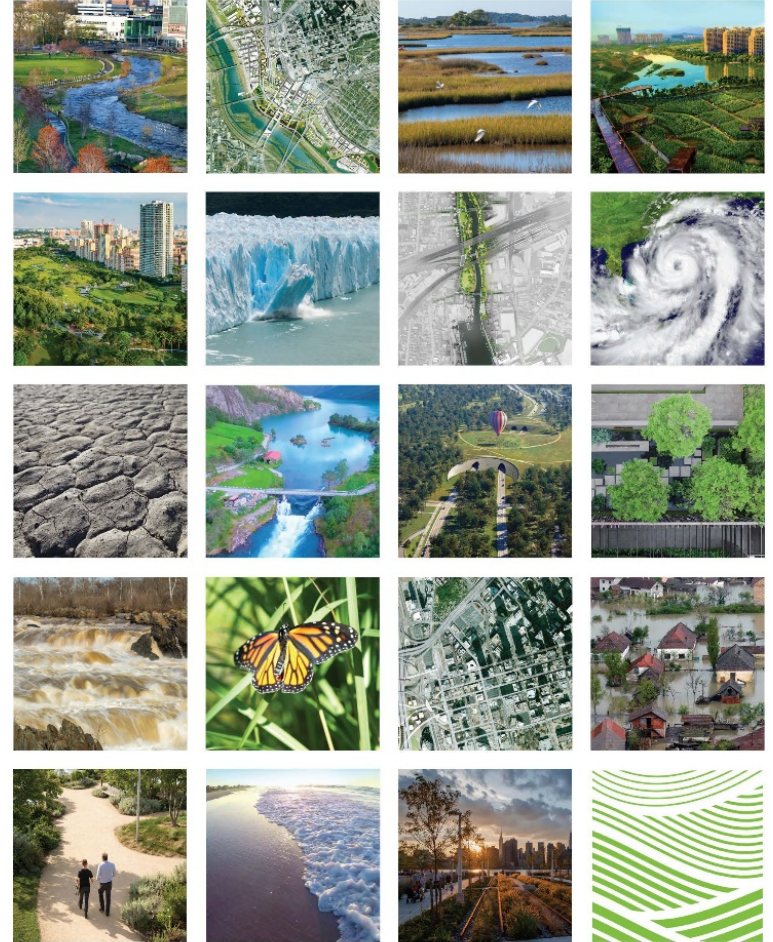
www.asla.org/climateaction



Smart Policies for a Changing Climate

The Report and Recommendations of the ASLA Blue Ribbon Panel on Climate Change and Resilience

“We need a new paradigm for building and enhancing communities that works in tandem with natural systems and considers the needs of all.”



SMART POLICIES FOR A CHANGING CLIMATE

An Exhibition at the ASLA
Center for Landscape Architecture



Landscapes

Read the Report

About the Panel

Submit Case Studies

About the Report

Climate change is intensifying the negative impacts of standard development practices and putting people and communities at risk. We need a new paradigm for building and enhancing communities that works in tandem with natural systems and considers the needs of all.

To meet that goal, ASLA's interdisciplinary Blue Ribbon Panel on Climate Change and Resilience identified key planning and design strategies.

Explore 20 case studies that exemplify these strategies.

[Visit the Exhibition at the ASLA Center for Landscape Architecture](#)

Given growing concerns about the effect of the coronavirus on daily life in the Washington, D.C., area, ASLA has suspended public access to the climate crisis exhibition. [Learn more.](#)

10AM—4PM, Monday—Friday
636 I Street, NW, Washington, D.C., 20001



Submit your
case studies!

climate.asla.org



Phipps' Center for Sustainable Landscapes
Pittsburgh, PA

THE Sustainable **SITES** Initiative®

SITES is inherently designed to help communities mitigate and adapt to the effects of climate change

Climate and Resilience Legislation

Living Shorelines Act



TREES Act



Great American Outdoors Act



Advocacy Matters!

www.asla.org/advocate.aspx



ASLA's iAdvocate Network

- Current Campaigns
- Join iAdvocate
- Track State Legislation
- Find Your Legislators



Federal Stimulus Packages to Address COVID-19




Join iAdvocate Today!



Sign Up Here >

FOLLOW US ON TWITTER

Tweets by @NationalASLA ⓘ

 American Society of Landscape Architects
@NationalASLA

Hear and share big ideas with the great minds behind Gruen Associates, Baker DC, and PlanIT Geo in "Contractors in Conversation - Strategies for Better Projects from Design Through Construction".

Explore more #reVISIONASLA2020 sessions:
bit.ly/reVISIONsched

<http://bit.ly/JoiniAdvocate>

Pacific Coast

Northeast Coast

Great Lakes

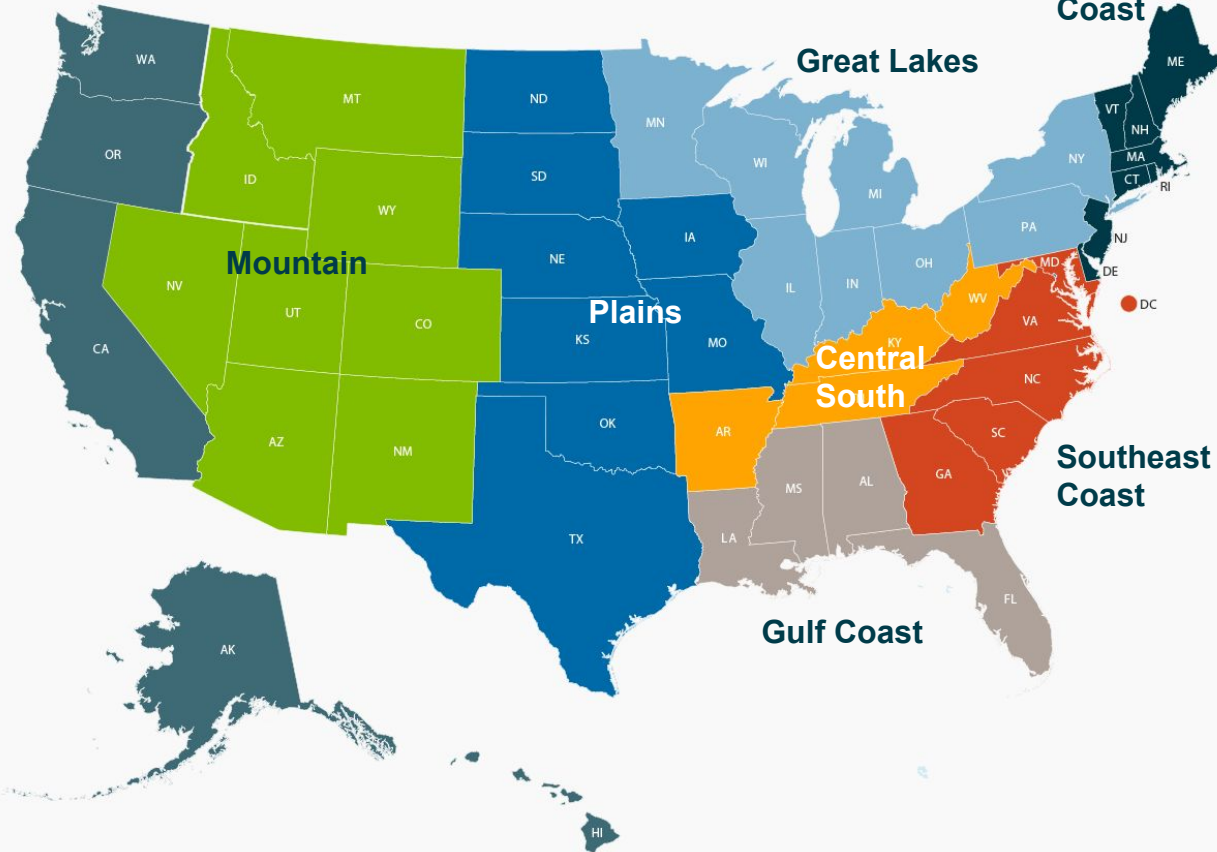
Mountain

Plains

Central South

Southeast Coast

Gulf Coast



Climate Action Committee

Pamela Conrad, ASLA, LEED AP
CMG Landscape Architecture

By the year 2030, be Climate Positive

With the global imperative for carbon emission reductions and sequestration, landscape architects can play a critical role in maximizing their capacity to realistically mitigate climate change.

Pamela will review the carbon conundrum from our profession's perspective and provide context, tools, and strategies toward achieving climate-positive design.



Climate-Positive Design

<https://climatepositivedesign.com/>

Congressman Scott Peters



THE CLIMATE PLAYBOOK

CONGRESSMAN SCOTT PETERS (CA-52)

Legislative measures introduced by members of both political parties are contained in the Climate Playbook.

This is only the beginning of a conversation. The playbook invites new ideas on how to improve these bills.

<https://scottpeters.house.gov/climateplaybook>

Submit Your Panelist Questions in Chat

Webinar Recording will be posted to
www.asla-sandiego.org

Thanks for Joining Us Today



American Society of
Landscape Architects



ASLA
CALIFORNIA
SAN DIEGO