

TAFT Middle School/Ruffin Canyon HabiTAFT Garden Laboratory



Legacy Project
SAN DIEGO 2011

Join Us!

New Gardens Planned to Reconnect Children to Their Environments

The American Society of Landscape Architects (ASLA) has partnered with the Friends of Ruffin Canyon and the ACE Mentor Program to design and implement an educational and native garden for William H. Taft Middle School.

The 2011 ASLA Legacy Committee selected this project as it presents an ideal forum for reconnecting children with the environment, and exposing them to the practice of landscape architecture. The school will develop curriculum that allows students to discover nature, investigate history, and celebrate culture. The garden will be universally accessible, providing opportunities where children of all abilities can explore San Diego's rich and diverse landscape.

In 2006, ASLA introduced the Legacy Program. This program seeks to promote positive change in the host city of the annual National Conference. The mission of the American Society of Landscape Architects (ASLA) is to lead, educate and participate in the careful stewardship, wise planning and artful design of our cultural and natural environments.

Benefits

Sponsors will be acknowledged in printed materials, press releases, construction day information panels, and at the 2011 National Meeting of the American Society of Landscape Architects October 30-November 1, 2011 in the opening video and the expo.

ASLA expects over 6,000 attendants from the region and the nation!

Legacy This project will serve and inspire the students and community for many years.

Sponsorship Opportunities



How You Can Help

Sponsor

- Construction day refreshments
- Purchase of necessary construction materials

Donate Construction Materials

Donate Labor

Thank you!

Join our growing list of San Diego sponsors:

- T. B. Penick
- Clark Construction
- NewSchool of Architecture and Design
- Hunter Industries
- Cut 'N Core
- Kimley-Horn and Associates
- Printing by



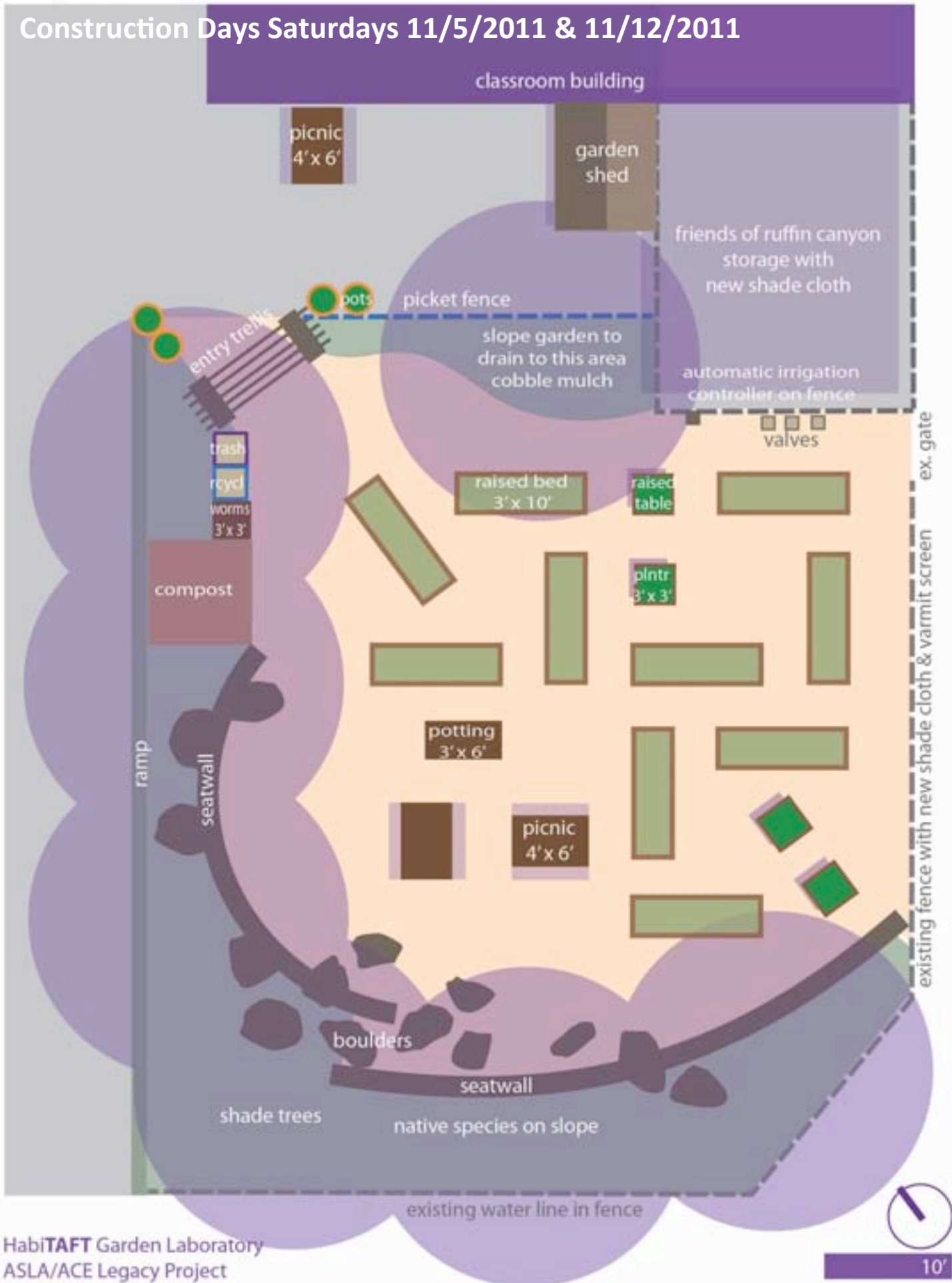
William H. Taft Middle School
9191 Gramercy Drive
San Diego, CA 92123

Contact

ASLA/ACE Legacy – Laura Burnett, ASLA
lburnett@blwla.com
619-405-9303

Construction Days Saturdays 11/5/2011 & 11/12/2011

Construction Days Saturdays 11/5/2011 & 11/12/2011



We are willing to donate the following:
Check all that apply

Donation of funds for the Purchase of :
Construction Materials
Refreshments for Construction Days

- \$250. \$1,000
 \$500. _____ other

Donations are tax deductible

- Materials – See attached list for specific items**
- Labor – Contractors**
 Build beds, trellis, fence;
 Irrigation installation;
 Construction Days with community volunteers
Saturday November 5, 9:00 – 4:00
 Saturday November 12, 9:00 – 4:00



Name

Firm

Address

Email

Complete and fax form to: 619-222-8154
TMHollingworth@sbcglobal.net

Make your check payable to:
ACE Mentor San Diego, Inc.
and mail along with a copy of this form to:

ACE Mentor Program of San Diego
c/o Morgan Hollingworth Public Affairs
1050 Rosecrans Street, Suite B
San Diego, CA 92106

TAFT Middle School/Ruffin Canyon HabiTAFT Garden Laboratory



Legacy Project
SAN DIEGO 2011

William H. Taft Middle School
9191 Gramercy Drive
San Diego, CA 92123

Materials – *Items we still really need*

Design Elements	Description	Company/Vendor	QUANTITY	UNIT
Walls and Fences				
Concrete Retaining Wall 1	18" height x 36 LF - Formwork and Installation Concrete	TB Penick	1 6 +/-	EA CY
Concrete Retaining Wall 2	18" Height x 48 LF - Formwork and Installation Concrete	TB Penick	1 7 +/-	EA CY
Wood Picket Fence	4' Ht, north edge and ramp		100	LF
Wood lattice screen fence with gates	For Compost/trash bin area, 6' x 12' x 4' ht		36	LF
Wildlife Control Fencing	Attached to bottom of existing Chainlink fencing Attached to new wooden picket fence		140 100	LF LF
Site Elements				
Entry Gate Trellis	4' x 12', wooden, with 4' high gate		1	EA
Tool shed	Modular, 8' x 10'		1	EA
Garden Green House	Modular, 10' x 15'		1	EA
Shade Structure	Storage Area Roof, 20' x 25'		1	EA
Fence Screen Fabric	East Fence Line, 90' x 10'		1	EA
Worm Bin			1	EA
Picnic table	expanded metal with umbrellas		3	EA
Potting Bench	3' x 6', wood		1	EA
Work Tables	3' x 3', wood		4	EA
Raised Planter Boxes	3'x10'x18"ht, rough cut Redwood		10	EA
Soil Preparation and Amendments	Raised Planter Soil		20	CY
	24" Topsoil backfill - Native Plant Garden Border		35	CY
	6" Organic Compost - Native Plant Garden Border		25	CY
	3" Organic Mulch - Native Plant Garden Border		13	CY
Plant ID Signage	6"x6" metal		TBD	EA
Garden Interpretive Signage	24"x36"		1	EA
Garden ornaments	bird feeders, bird/butterfly houses, humming bird/bird/ butterfly feeders, kinetic wind art, sun dials, etc...		TBD	
Garden Art Panels	TBD		4 to 12	EA



The project site, on the school campus above Ruffin Canyon



Our goal raised beds!
These is an excellent example by Urban Plantations

Construction Days Saturdays 11/5/2011 & 11/12/2011